



FINE
JEWELS

LONDON 6 JUNE 2018

Sotheby's EST.
1744



FRONT COVER
LOT 379 (DETAIL)
BACK COVER
LOT 377
THIS PAGE
LOT 192, 197, 247, 317

FINE
JEWELS





FINE JEWELS

AUCTION IN LONDON
6 JUNE 2018
SALE L18051

SESSION ONE: 10 AM
SESSION TWO: 2 PM

EXHIBITION

Friday 01 June
9 am-4.30 pm

Saturday 02 June
12 noon-5 pm

Sunday 03 June
12 noon-5 pm

Monday 04 June
9 am-4.30 pm

Tuesday 05 June
9 am-4.30 pm

34-35 New Bond Street
London, W1A 2AA
+44 (0)20 7293 5000
sothebys.com



SPECIALISTS FOR THIS SALE



David Bennett
Worldwide Chairman
International Jewellery Division
+41 22 908 4842
david.bennett@sothebys.com



Daniela Mascetti
Senior Specialist,
Deputy Chairman, Jewellery, Europe
+41 22 908 4815
daniela.mascetti@sothebys.com



Brett O'Connor
Senior Specialist, International
+41 22 908 4845
brett.o'connor@sothebys.com



Andres White Correal
Director of International Business
Development
+44 20 7293 6409
andres.whitecorreal@sothebys.com



Kristian Spofforth
Head of Sale, London
+44 20 7293 6409
kristian.spofforth@sothebys.com



Justin Roberts
Head of Catalogue Production,
Specialist, London
+44 20 7293 6409
justin.roberts@sothebys.com



Benoit Repellin
Specialist, London
+44 20 7293 6409
benoit.repellin@sothebys.com



Johanna Seehuusen
Cataloguer, London
+44 20 7293 6409
johanna.seehuusen@sothebys.com



Samuel Hug
Cataloguer, London
+44 20 7293 6409
samuel.hug@sothebys.com

Rebecca Spencer
European Business Director
+41 22 908 4840
rebecca.spencer@sothebys.com

Jessica Whitman
Business Director
+44 20 7293 6312
jessica.whitman@sothebys.com

SPECIALISTS AND AUCTION ENQUIRIES

For further information on lots in this auction please contact any of the specialists listed below.

SALE NUMBER

L18051 "BRIOLLETTE"

BIDS DEPARTMENT

+44 (0)20 7293 5283

FAX +44 (0)20 7293 6255

bids.london@sothebys.com

Telephone bid requests should be received 24 hours prior to the sale. This service is offered for lots with a low estimate of £3,000 and above.

EUROPE

Beatriz Quiralte

beatriz.quiralte@sothebys.com

Fergus Duff

fergus.duff@sothebys.com

ASIA

Shu Zheng

shu.zheng@sothebys.com

INDIA

Gauri Agarwal

gauri.agarwal@sothebys.com

Milaap Patel

milaap.patel@sothebys.com

RUSSIA & CIS

Alina Davey

alina.davey@sothebys.com

Irina Kronrod

irina.kronrod@sothebys.com

Lilija Sitnika

lilija.sitnika@sothebys.com

Maryam Kalo

maryam.kalo@sothebys.com

+44 (0)20 7293 5094

SALE ADMINISTRATOR

Katie Barnet

katie.barnet@sothebys.com

+44 (0)20 7293 5149

FAX +44 (0)20 7293 5937

POST SALE SERVICES

Maxwell Maisey

Post Sale Manager

FOR PAYMENT, DELIVERY AND COLLECTION

+44 (0)20 7293 5220

FAX +44 (0)20 7293 5910

ukpostsaleservices@sothebys.com

PRESS ENQUIRIES

Hanae Rebelo

+44 (0)20 7293 5522

hanae.rebelo@sothebys.com

CATALOGUE PRICE

£25 at the gallery

FOR SUBSCRIPTIONS CALL

+44 (0)20 7293 5000

for UK & Europe

+1 212 606 7000 USA

CONDITION REPORTS

Sotheby's Jewellery department is pleased to offer to potential purchasers Condition Reports of the lots in this catalogue.

A Condition Report is an opinion describing in more depth the lot with regards to, but not limited to, the general condition, quality of stones and/or other relevant information.

LONDON

Johanna Seehuusen

Samuel Hug

LondonJewels@sothebys.com

+44 207 293 6409

Fax +41 22 908 5964

Conditions reports are also available on our website sothebys.com



Important Notices Please note that all lots are sold subject to our Conditions of Business for Buyers and Authenticity Guarantee, which are set forth at the back of this catalogue and Conditions of Business for Sellers, which are available from Sotheby's offices on request.

For all lots marked with a ◊, △, □ or ⊞ please refer to the Guide for Prospective Buyers.

For all lots marked * please refer to the **Important Notices** at the back of this catalogue.

References in the catalogue descriptions to certificates or reports issued by gemmological laboratories are included only for the information of bidders, and Sotheby's accepts no responsibility for the accuracy,

terms or information contained in such certificates or reports. Please also note that Laboratories may differ in their assessment of a gemstone (including its origin and presence, type and extent of treatments) and their certificates or reports may contain different results.

Various manufacturers may not issue certificates of authenticity upon request. Except as specifically noted in the catalogue, Sotheby's will not be required to furnish the purchaser with a certificate of authenticity from the manufacturer at any time. Unless the requirements for a rescission of the sale under the Terms of Guarantee are satisfied, the failure of a manufacturer to issue a certificate will not constitute grounds to rescind the sale.

LONDON ROCKS®

A REGISTERED TRADEMARK OF SOTHEBY'S



CONTENTS

3	AUCTION INFORMATION
5	SPECIALISTS AND AUCTION ENQUIRIES
10	SESSION ONE: LOTS 1–191
80	SESSION TWO: LOTS 192–379
157	ABSENTEE BID FORM
159	BUYING AT AUCTION
160	EXPLANATION OF SYMBOLS VAT INFORMATION FOR BUYERS
162	CONDITIONS OF BUSINESS FOR BUYERS
163	WAREHOUSE, STORAGE, COLLECTION INFORMATION
164	AUTHENTICITY GUARANTEE IMPORTANT NOTICES GLOSSARY OF TERMS
166	INTERNATIONAL DEPARTMENTS
167	SOTHEBY'S EUROPE
168	INDEX





SESSION ONE

LONDON
WEDNESDAY
6 JUNE 2018
10 AM

LOTS 1-191





1

Natural pearl and diamond necklace

Composed of graduated natural pearls measuring from approximately 3.0 to 7.1mm, to a millegrain-set circular-cut diamond clasp, *length approximately 455mm.*

Accompanied by a gemmological report.

£ 5,500-6,500 € 6,400-7,500 US\$ 7,900-9,300

2

Natural pearl and diamond brooch, circa 1910

Designed as a miniature sceptre, set with a natural pearl measuring approximately 10.1 x 10.2 x 8.3mm, and circular-cut and rose diamonds.

Accompanied by a gemmological report.

£ 2,600-3,200 € 3,000-3,700 US\$ 3,750-4,600



3

Natural pearl and diamond ring

Set with two button shaped natural pearls, one grey and one cream, each measuring approximately 9.20 to 9.30mm, and circular- and single-cut diamonds, *size J^{1/2}, French assay marks.*

Accompanied by a gemmological report.

£ 5,000-7,000 € 5,800-8,100 US\$ 7,200-10,100



4



5



6



7

4

Sapphire and diamond necklace, retailed by Cartier

Of choker design, composed of three rows of polished sapphire beads, to a rectangular open work millegrain-set single-cut diamond clasp, centring on a collet-set cushion-shaped sapphire, length approximately 330mm, inscribed Cartier, indistinct maker's marks.

Accompanied by a Cartier certificate of authenticity.

£ 15,000-20,000 € 17,300-23,000 US\$ 21,500-28,700

5

Sapphire, moonstone and diamond brooch, 1920s

Set with an oval sapphire, within a surround of carved moonstone, bordered by millegrain-set rose diamonds, detachable brooch fitting partially signed Koch.

Accompanied by a gemmological report.

£ 4,500-6,500 € 5,200-7,500 US\$ 6,500-9,300

6

Diamond clip brooch, Cartier, 1930s

The pierced geometric plaque set with circular-, single-cut and baguette diamonds, signed Cartier, French import assay marks, fitted case stamped Cartier.

£ 3,000-4,000 € 3,450-4,600 US\$ 4,300-5,800

7

Sapphire and diamond ring

Set with a rectangular step-cut sapphire, between baguette diamonds, to a pierced gallery set with single-cut diamonds, size O^{1/2}.

Accompanied by a gemmological report.

£ 6,000-8,500 € 6,900-9,800 US\$ 8,600-12,200



8



9



10

8

Natural freshwater pearl, diamond and sapphire necklace

Composed of two rows of graduated natural freshwater pearls measuring from approximately 4.1 to 10.0mm, to a cabochon sapphire and circular- and single-cut diamond clasp, *length approximately 375mm, Swedish assay and maker's marks.*

Accompanied by a gemmological report.

£ 4,000-6,000 € 4,600-6,900 US\$ 5,800-8,600

9

Sapphire and diamond ring

Collet-set with a cushion-shaped sapphire weighing 5.40 carats, within a surround of brilliant-cut diamonds, *size L^{V2}, British hallmarks and sponsor's mark.*

Accompanied by a gemmological report.

£ 15,000-20,000 € 17,300-23,000 US\$ 21,500-28,700

10

Sapphire and diamond brooch, circa 1900

Designed as a crescent moon, set with cushion-shaped sapphires and diamonds, *brooch fitting detachable, converting to a hair ornament with a tortoiseshell comb fitting, French assay and maker's marks, fitted monogrammed case.*

Accompanied by a gemmological report.

© £ 14,000-18,000 € 16,100-20,700 US\$ 20,100-25,800



11



12



13

11

Diamond necklace, late 19th century

Of festoon design, composed of floral and foliate motifs set with circular-, single-cut and cushion-shaped diamonds, to a detachable chain-link necklace, *length approximately 400mm, Austro-Hungary assay and indistinct maker's marks.*

£ 3,000-5,000 € 3,450-5,800 US\$ 4,300-7,200

12

Sapphire and diamond ring

Set with a cushion-shaped sapphire weighing 5.08 carats, within a surround of brilliant-cut diamonds, *size M^{1/2}, British hallmarks and sponsor's mark.*

Accompanied by a gemmological report.

£ 15,000-20,000 € 17,300-23,000 US\$ 21,500-28,700

13

Diamond bracelet, Mrs Newman, late 19th century and later

The front composed of a graduated line of millegrain-set circular-cut diamonds, to a later expandable bracelet, *length approximately 175mm, unsigned, numbered, fitted case stamped Mrs Newman.*

Charlotte Isabella Newman (1836-1920) was a studio jeweller, active around 1870 - 1910. Notable not only for the quality of her designs, but also for her trailblazing status as a woman in a heavily male-dominated industry, she is thought to be the first important female jeweller. Entering into the world of jewellery as a pupil and assistant of the jeweller John Brogden, her proficiency in both designing and making jewellery in the fashionable Etruscan and Renaissance revival styles won great acclaim for the firm, as well as the Médaille d'Honneur at the 1878 International Exhibition in Paris. After Brogden's death in 1885, she established her own business, under the name Mrs Newman, and continued to employ many of the craftsmen she had managed under Brogden. Examples of both her work and her design drawings can be found in the Victoria and Albert Museum.

After her death in 1920, Mrs Newman's daughters continued the business until the late 1930's, moving the premises to 68 Duke Street in 1927, where the present lot was purchased.

£ 5,000-7,000 € 5,800-8,100 US\$ 7,200-10,100



14



15

14

Diamond tiara, circa 1905

The front section composed of floral and foliate scrolls, rising to alternating spikes and cartouche motifs, millegrain-set with circular-, single-cut and rose diamonds, to a flexible band, *inner circumference approximately 290mm, detaching to form the front part of a necklace, fitted box stamped Collingwood & Co.*

£ 10,000-15,000 € 11,500-17,300 US\$ 14,400-21,500

15

Sapphire and diamond brooch, circa 1910

Set with an oval sapphire, within a foliate surround, supporting an articulated laurel festoon, millegrain-set throughout with cushion-shaped diamonds, *composite.*

£ 3,000-4,000 € 3,450-4,600 US\$ 4,300-5,800





17



16



18

16

Sapphire and diamond ring

Set with a circular-cut sapphire, within a circular- and single-cut diamond surround, size *M*.

Accompanied by a gemmological report.

£ 2,600-3,500 € 3,000-4,050 US\$ 3,750-5,100

17

Diamond ring

Millegrain-set with a cushion-shaped diamond, size *N^{L/2}*.

£ 2,600-3,500 € 3,000-4,050 US\$ 3,750-5,100

18

Sapphire and diamond brooch

Of foliate design, set with an oval and cushion-shaped sapphire and rose diamonds, *one diamond deficient*.

Accompanied by a gemmological report.

£ 5,000-7,000 € 5,800-8,100 US\$ 7,200-10,100



19

19

Emerald and diamond brooch

Of open work design, set with rectangular step-cut emeralds and circular-, single-cut and cushion-shaped diamonds.

£ 2,000-3,000 € 2,300-3,450 US\$ 2,900-4,300



20

20

Diamond ring

Set with a circular-cut diamond weighing 2.87 carats, size $Q^{1/2}$.

£ 5,000-7,000 € 5,800-8,100 US\$ 7,200-10,100

21

Pair of emerald and diamond earrings and a pendant, late 19th century

Each earring set with an oval emerald, framed by circular-cut diamonds, *hook and hinged back fittings*; the pendant of foliate and knife-bar linking design, set with a cushion-shaped and oval emerald and circular-cut diamonds, to a neckchain, *length of chain approximately 537mm, Russian assay marks*.

£ 3,500-4,500 € 4,050-5,200 US\$ 5,100-6,500



21



22



24



23

22

Synthetic ruby and diamond ring, circa 1910

Claw-set with a circular-cut diamond weighing 1.79 carats and a circular-cut synthetic ruby, to a band millegrain-set with single-cut and cushion-shaped diamonds, *size P*.

£ 4,000-6,000 € 4,600-6,900 US\$ 5,800-8,600

23

Sapphire and diamond bracelet, 1920s

Composed of articulated links set with circular-cut diamonds, within millegrain-set borders, accented with calibré-cut sapphires, *length approximately 177mm*.

£ 11,000-15,000 € 12,700-17,300 US\$ 15,800-21,500

24

Coral and diamond necklace, circa 1910

Of pendent design, the drop-shaped coral suspended from a millegrain-set circular-cut and rose diamond suspension, to a coral bead and fine-link neckchain, *length approximately 425mm, one rose diamond deficient*.

£ 3,000-5,000 € 3,450-5,800 US\$ 4,300-7,200



26



25

25

Diamond brooch, circa 1910

Of festoon design, the centre of pierced lattice work, supporting a drop-shaped pendant, millegrain-set with circular-cut diamonds and a briolette diamond, *later added brooch fitting, fitted case stamped S.J. Phillips.*

£ 8,000-12,000 € 9,200-13,800 US\$ 11,500-17,200



27

26

Enamel, sapphire and diamond pendant/ brooch, Masriera, 1920s

Of oval form, with a design of a confronted pair of peacocks perched on a fountain in *plique-à-jour* enamel, accented with rose diamonds and a pear-shaped sapphire, to a border and surmount set with square and calibré-cut sapphires and rose diamonds, *unsigned, partial assay mark.*

Accompanied by certificate of authenticity from Masriera.

£ 7,000-11,000 € 8,100-12,700 US\$ 10,100-15,800

27

Diamond and emerald ring, early 20th century

Of target design, millegrain-set with a brilliant-cut diamond, framed by calibré-cut emeralds and circular-cut diamonds, to circular-cut diamond shoulders, *size I.*

£ 3,000-5,000 € 3,450-5,800 US\$ 4,300-7,200



28



30



29

28

Demantoid garnet and diamond brooch

Designed as a butterfly mounted *en tremblant*, set with circular-cut diamonds and demantoid garnets.

£ 12,000-18,000 € 13,800-20,700 US\$ 17,200-25,800

29

Ruby and diamond bracelet, 1920s

Of geometric design centring on a lozenge-shaped plaque, millegrain-set with circular- and single-cut diamonds and calibr -cut rubies, *length approximately 175mm, maker's mark, several rubies and diamonds deficient.*

£ 2,800-4,200 € 3,250-4,850 US\$ 4,050-6,100

30

Opal and diamond necklace

Of pendent design, claw-set with a cabochon opal, the surround and surmount millegrain-set with brilliant-cut diamonds, to a fine-link necklace, *length approximately 445mm.*

† £ 2,000-3,000 € 2,300-3,450 US\$ 2,900-4,300



31



32



34



33

31

FORMERLY IN THE COLLECTION OF COUNTESS LANZA DI MAZZARINO

Sapphire and diamond brooch, 1910s

Designed as a ribbon bow, suspending laurel wreaths, set with rose diamonds and an oval sapphire, *signed Confalonieri, case stamped Confalonieri*.

£ 2,200-3,500 € 2,550-4,050 US\$ 3,150-5,100

32

PROPERTY OF A LADY

Natural pearl and diamond brooch

Of bar design, set with three natural pearls, measuring from approximate 5.31 to 7.18 mm, and rose diamonds, *French assay marks*.

Accompanied by a gemmological report.

£ 3,500-7,000 € 4,050-8,100 US\$ 5,100-10,100

33

FROM A PRIVATE COLLECTION

Sapphire and diamond bracelet

Of geometric design, set with a rectangular step-cut sapphire, flanked by rectangular step-cut diamonds, further set with circular- and single-cut diamonds, *length approximately 150mm*.

Accompanied by a gemmological report.

£ 3,000-5,000 € 3,450-5,800 US\$ 4,300-7,200

34

PROPERTY OF A LADY

Sapphire and diamond brooch

Set with a cabochon sapphire and circular-cut and rose diamonds, suspending sapphire drops.

£ 30,000-40,000 € 34,500-46,000 US\$ 43,000-57,500



35

35

Demantoid garnet, pearl, enamel and diamond pendant/brooch, attributed to Alfred Phillips, late 19th century

In the Etruscan revival style, of quatrefoil design with rope twist borders, the centre set with a natural pearl measuring approximately 8.8 x 8.6 x 6.0mm, between oval demantoid garnets, cushion-shaped diamonds and seed pearls, applied with a foliate design in green and white cloisonné enamel, to a later pendant fitting applied with translucent green and red enamel, *maker's mark AP, brooch pin deficient.*

The central pearl accompanied by a gemmological report.

Alfred Phillips was the son of Robert Phillips (1810-1881), who founded Phillips Brothers & Sons of Cockspur Street. Drawing inspiration from jewels by their Italian contemporaries Castellani, Phillips was a major proponent of the Archaeological Revival style in England, alongside the jewellers John Brogden and Carlo and Arthur Giuliano. Alfred continued the family business after his father's death in 1881 until 1902, when the remaining stock was sold to the jewellers D&J Wellby Ltd of Garrick Street.

LITERATURE

Cf.: Susan Weber Soros and Stefanie Walker, *Castellani and Italian Archaeological Jewelry*, Bard Graduate Center for Studies in the Decorative Arts, Design and Culture, New York, 2004, pg. 249, for a brooch of similar design by Castellani.

£ 2,000-3,000 € 2,300-3,450 US\$ 2,900-4,300



36

36

Bracelet, 1870s

Designed as an articulated line of oval lockets, the hinged lids each with applied letter within a bead and cord work border, spelling the word 'souvenir', each opening to reveal a photograph, *length approximately 202mm, Dutch assay and sponsor's marks.*

£ 2,500-3,000 € 2,900-3,450 US\$ 3,600-4,300

37

Bangle, early 20th century

Of hinged crossover design, each terminal set with a rams head, *inner circumference approximately 170mm.*

£ 4,000-6,000 € 4,600-6,900 US\$ 5,800-8,600



37



38

38

Natural pearl and diamond diadem, late 19th century

The front set with graduated natural pearls measuring from approximately 3.9 to 5.5mm, each pearl set on knife-edge linking with rose diamond detail, to a rose diamond line base, *fitting detachable, inner circumference approximately 345mm, later fitted case.*

Accompanied by a gemmological report.

£ 5,000-6,000 € 5,800-6,900 US\$ 7,200-8,600



40

39

Natural pearl and diamond brooch/pendant, circa 1900

Of scrolling foliage design, set to the centre with a baroque pearl, suspending a drop shaped natural pearl and circular-cut diamond pendant, *later added detachable brooch fitting.*

Accompanied by a gemmological report.

£ 5,000-7,000 € 5,800-8,100 US\$ 7,200-10,100

40

Pair of diamond earrings

Each collet-set with a rose diamond, *hook and hinge back fittings.*

£ 3,000-5,000 € 3,450-5,800 US\$ 4,300-7,200



39



41

41

FROM A PRIVATE COLLECTION

Gem set and diamond demi-parure

Comprising: a necklace supporting a detachable pendant that can be worn as a brooch, *length approximately 220mm*, part of the necklace can be worn as a bracelet, *length approximately 180mm*, a ring, *size R^{1/2}*; and a pair of pendent earclips en suite.

£ 2,500-4,000 € 2,900-4,600 US\$ 3,600-5,800

42

PROPERTY OF A LADY

Enamel and diamond pendant watch, 1910s

The detachable pendant watch, set with circular- and single-cut diamonds, on a pink enamel ground, the dial applied with Arabic numerals, to a long chain designed as a series of pink enamel baton-links and seed pearls, clasp designed as a ribbon bow-brooch, *mechanical movement, length approximately 320mm*.

£ 2,200-3,500 € 2,550-4,050 US\$ 3,150-5,100

24

SOTHEBY'S



42

43

43

PROPERTY OF A LADY

Enamel and diamond long chain pendant watch, 1910s

Millegrain-set with rose diamonds, on a blue enamel ground, dial applied with Arabic numerals, to a long chain designed as a series of blue and white enamel links, *mechanical movement, length approximately 825mm*.

£ 3,000-6,000 € 3,450-6,900 US\$ 4,300-8,600



44



45



46

44

Micromosaic necklace, 1860s

Designed as a row of rectangular micromosaic tiles between a fine woven chain, suspending a series of hexagonal micromosaics depicting cupid, a girl with ribbons in her hair, the dove of peace and a butterfly. *length approximately 450mm, Roman assay marks.*

£ 6,000-8,000 € 6,900-9,200 US\$ 8,600-11,500

45

Enamel bangle, mid 19th century

Of hinged design, the centre depicting two children holding a dog against a basse taille background, within a ronde-bosse floral surround, *inner circumference approximately 160mm, French assay mark, cased.*

£ 6,000-8,000 € 6,900-9,200 US\$ 8,600-11,500

46

Agate cameo pendant brooch, Luigi Rosi, 1870s

Set with a circular agate cameo depicting Minerva, within a seed pearl and open work border in the Etruscan Revival style, suspended from a fine rope work and seed pearl floral motif, *detachable pendant fitting, signed L. Rosi.*

£ 2,600-3,500 € 3,000-4,050 US\$ 3,750-5,100



47



48



49

47

Amethyst necklace, early 19th century

Set with graduated oval amethysts in foil-backed settings, two with open backed setting, length approximately 440mm.

£ 2,600-3,500 € 3,000-4,050 US\$ 3,750-5,100

48

Diamond brooch, late 19th century

Of foliate design, set with circular-cut and cushion-shaped diamonds, later added brooch fitting, some diamonds are paste replacements.

£ 4,500-6,500 € 5,200-7,500 US\$ 6,500-9,300

49

Diamond brooch

Designed as a flowering branch, pavé- and claw-set with brilliant-cut diamonds of yellow and near colourless tint, the central flower mounted *en tremblant*, one diamond deficient.

Please note that the diamonds of yellow tint have not been tested for natural colour origin.

£ 4,000-6,000 € 4,600-6,900 US\$ 5,800-8,600



50



51

50

Diamond necklace and two diamond pendants

The necklace composed of graduated collets, the front supporting three foliate pendants, set throughout with rose diamonds, *length approximately 440mm*; together with two pendants of similar design.

Accompanied by three appraisal documents.

£ 6,000-8,000 € 6,900-9,200 US\$ 8,600-11,500

51

Sapphire and diamond brooch, circa 1900

Claw-set with a rectangular step-cut sapphire, within a scroll and foliate surround set with circular-cut and rose diamonds, *brooch fitting detachable*.

£ 6,000-8,000 € 6,900-9,200 US\$ 8,600-11,500



52

52

Diamond rivière and an emerald and diamond pendant, mid to late 19th century

The pendant set with a rectangular step-cut emerald, within a circular-cut diamond foliate surround, suspended from a similar-set bow surmount, to a necklace composed of graduated pinched collet-set circular-cut and cushion-shaped diamonds, length approximately 435mm, detachable brooch fitting, fitted case.

£ 12,000-18,000 € 13,800-20,700 US\$ 17,200-25,800



54

53

53

PROPERTY OF A LADY

Diamond necklace, late 19th century

The front suspending a fringe of circular-cut and rose diamonds, to a rose diamond set necklace, *length approximately 180mm.*

£ 7,000-10,500 € 8,100-12,100 US\$ 10,100-15,100

54

FROM A NOBLE FAMILY

Diamond ring

Claw-set with a brilliant-cut diamond weighing 1.12 carats, *size V.*

£ 1,400-2,200 € 1,650-2,550 US\$ 2,050-3,150



55

55

PROPERTY OF A LADY

Diamond brooch, late 19th century

Designed as a flower spray, set with cushion-shaped and rose diamonds.

£ 2,200-3,500 € 2,550-4,050 US\$ 3,150-5,100

PROPERTY FROM A NOBLE FAMILY

LOTS 56-131



57



56



58



59

56

FROM A NOBLE FAMILY

Diamond brooch, mid 19th century

Designed as a rooster, set with rose diamonds, the crest and wattle set with cabochon rubies, the eye with an emerald.

£ 400-700 € 500-850 US\$ 600-1,050

57

FROM A NOBLE FAMILY

Natural pearl and diamond necklace

Designed as a line of natural pearls, measuring from approximately 5.0 to 7.5mm, alternating with circular-cut diamond links, *length approximately 420mm*.

Accompanied by a gemmological report.

£ 1,500-2,200 € 1,750-2,550 US\$ 2,150-3,150

58

FROM A NOBLE FAMILY

Diamond brooch

Designed as a floral spray, set with cushion-shaped and rose diamonds, *two diamonds deficient*.

£ 700-1,500 € 850-1,750 US\$ 1,050-2,150

59

FROM A NOBLE FAMILY

Diamond ring

Set with circular-cut diamonds, to open work shoulders, *size M, Italian assay and maker's mark*.

£ 1,100-1,800 € 1,300-2,100 US\$ 1,600-2,600



60

60

FROM A NOBLE FAMILY

Ruby and diamond bracelet, Cartier

Set with various charms, including a car, a pair of wings and an angel, set with rubies and diamonds, to a baton-shaped link bracelet set with ruby beads, *length approximately 200mm, signed Cartier, numbered.*

£ 3,500-5,000 € 4,050-5,800 US\$ 5,100-7,200



61

61

FROM A NOBLE FAMILY

Diamond ring

Claw-set with a rectangular step-cut diamond, to single-cut diamond shoulders, *size M^{1/2}.*

£ 6,500-8,500 € 7,500-9,800 US\$ 9,300-12,200



62

62

FROM A NOBLE FAMILY

Diamond ring

Claw-set with a rectangular step-cut diamond, to single-cut diamond shoulders, *size O.*

£ 4,200-8,500 € 4,850-9,800 US\$ 6,100-12,200



63



64



65

63

FROM A NOBLE FAMILY

Diamond brooch

Of flower spray design, set with brilliant-cut, pear-, marquise-shaped and baguette diamonds, *with two interchangeable ruby-set flowers, Italian assay and maker's marks.*

£ 5,000-7,000 € 5,800-8,100 US\$ 7,200-10,100

64

FROM A NOBLE FAMILY

Sapphire and diamond bracelet

Set with a rectangular step-cut sapphire, brilliant- and circular-cut diamond shoulders, to a similarly-set bracelet, *length approximately 175mm.*

£ 1,800-2,500 € 2,100-2,900 US\$ 2,600-3,600

65

FROM A NOBLE FAMILY

Sapphire and diamond brooch

Set with a cabochon sapphire, framed by brilliant- and single-cut diamonds.

£ 1,500-2,200 € 1,750-2,550 US\$ 2,150-3,150



66



67

66

FROM A NOBLE FAMILY

Emerald and diamond necklace, 1960s

Of swag design, supporting a floral motif set with an oval emerald, framed by brilliant-cut diamonds, further supporting brilliant-cut diamonds and circular-cut emeralds, accented by single-cut and baguette diamonds, *length approximately 290mm, Italian assay mark.*

£ 4,200-7,000 € 4,850-8,100 US\$ 6,100-10,100



68

67

FROM A NOBLE FAMILY

Pair of emerald and diamond earrings

Each of pendent design, suspending a pear-shaped emerald framed by brilliant-cut and baguette diamonds, to a similar-set surmount, *post and butterfly fittings.*

£ 4,200-6,000 € 4,850-6,900 US\$ 6,100-8,600

68

FROM A NOBLE FAMILY

Diamond, enamel and ruby ring, Frascarolo

Designed as a tiger, applied with black enamel, set with brilliant- and single-cut diamonds and ruby eyes, *size H, Italian assay and maker's marks.*

£ 1,500-2,500 € 1,750-2,900 US\$ 2,150-3,600



69

70

69

FROM A NOBLE FAMILY

Lady's diamond evening bag, 1960s

Of basket woven design, the hinged lid enhanced with brilliant-cut diamond initials and crown, opening to reveal a mirror and a single compartment, measuring approximately 220 x 125 x 50mm, Italian assay mark, total gross weight approximately 700 grams.

£ 4,200-6,500 € 4,850-7,500 US\$ 6,100-9,300

34

SOTHEBY'S

70

FROM A NOBLE FAMILY

Cultured pearl and diamond demi-parure

Comprising: a necklace and a bracelet, each set with cultured pearls, the necklace with scrolled links set with brilliant- and single-cut diamonds, additional six diamond dividers to necklace, necklace length approximately 320mm, bracelet length approximately 175mm.

Accompanied by a gemmological report.

£ 4,200-7,000 € 4,850-8,100 US\$ 6,100-10,100



71



72



73

71

FROM A NOBLE FAMILY

Cultured pearl and diamond demi-parure

Comprising: a necklace and a bracelet, each set with cultured pearls and brilliant- and single-cut diamonds, *necklace length approximately 400mm, bracelet length approximately 160mm.* Accompanied by a gemmological report.

£ 3,200-5,500 € 3,700-6,400 US\$ 4,600-7,900

72

FROM A NOBLE FAMILY

Pair of diamond brooches

Each of ribbon bow design, set with brilliant- and single-cut diamonds.

£ 1,000-2,000 € 1,150-2,300 US\$ 1,450-2,900

73

FROM A NOBLE FAMILY

Diamond bracelet, 1930s

Of geometric open work design, set with brilliant- and circular-cut diamonds, *length approximately 170mm.*

£ 5,000-10,000 € 5,800-11,500 US\$ 7,200-14,400



74



75



76



77

74

FROM A NOBLE FAMILY

Enamel, ruby and diamond bangle, Frascarolo

Designed as a tiger, applied with blue and white enamel, the eyes set with circular-cut rubies, the snout and paws set with brilliant-cut diamonds, *inner circumference approximately 160mm, Italian assay and maker's mark.*

£ 2,000-4,000 € 2,300-4,600 US\$ 2,900-5,800

75

FROM A NOBLE FAMILY

Enamel and diamond brooch, Frascarolo

Designed as a cat applied with blue enamel, single-cut diamonds, marquise-shaped ruby eyes, *Italian assay and maker's marks.*

£ 300-600 € 350-700 US\$ 450-900

76

FROM A NOBLE FAMILY

Enamel ring, David Webb

Of geometric design, applied with white enamel, *size N½, signed Webb.*

£ 1,000-2,000 € 1,150-2,300 US\$ 1,450-2,900

77

FROM A NOBLE FAMILY

Enamel long chain necklace

The lozenge-shaped link necklace applied with blue enamel, supporting a detachable circular-shaped blue enamel pendant decorated with a ram, *length approximately 545mm, Italian assay and partial maker's marks.*

£ 1,500-2,500 € 1,750-2,900 US\$ 2,150-3,600



78

FROM A NOBLE FAMILY

Enamel, ruby and diamond necklace/brooch, Frascarolo

The chain of paw link design, supporting a detachable tiger's head, each applied with white and blue enamel, tiger's head set with pear-shaped rubies and brilliant-cut diamonds, can be worn as a brooch, additional link, length approximately 455mm, Italian assay and maker's marks.

£ 4,200-8,500 € 4,850-9,800 US\$ 6,100-12,200



79

79

FROM A NOBLE FAMILY

Enamel and diamond ring, David Webb

Of bombé design, applied with black and red enamel, size M, signed Webb.

£ 1,000-2,000 € 1,150-2,300 US\$ 1,450-2,900



80

80

FROM A NOBLE FAMILY

Diamond ring, David Webb

Of bombé design, set with brilliant-cut and baguette diamonds, interchangeable mounts, one of textured gold and the other set with brilliant-cut diamonds, each size L½, one signed Webb.

£ 2,800-5,000 € 3,250-5,800 US\$ 4,050-7,200



81

FROM A NOBLE FAMILY

Ruby and enamel ring, David Webb

Set with a pear-shaped carved ruby, the mount applied with black enamel, *size M, signed Webb.*

£ 2,200-3,500 € 2,550-4,050 US\$ 3,150-5,100

82

FROM A NOBLE FAMILY

Enamel, ruby and diamond necklace/brooch, Frascarolo

The fancy link long-chain suspending a detachable leopard's head pendant, applied with black enamel, set with pear-shaped rubies and brilliant-cut diamonds, *can be worn as a brooch, length approximately 455mm, Italian assay and maker's marks.*

£ 3,500-5,000 € 4,050-5,800 US\$ 5,100-7,200

83

FROM A NOBLE FAMILY

Enamel, ruby and diamond ring, Frascarolo

Designed as a leopard, applied with black enamel and gold spots, the eyes set with circular-cut rubies, the snout set with single-cut diamonds, *size H, Italian assay and maker's marks.*

£ 1,000-1,500 € 1,150-1,750 US\$ 1,450-2,150

84

FROM A NOBLE FAMILY

Pair of enamel, ruby and diamond cufflinks, Frascarolo

Each designed as a leopard, applied with black enamel, the eyes set with circular-cut rubies, the snout set with circular- and single-cut diamonds, *Italian assay and maker's marks.*

£ 700-1,500 € 850-1,750 US\$ 1,050-2,150



85



86



85

FROM A NOBLE FAMILY

Coral, onyx and diamond parure

Comprising: a bracelet, designed as a line of geometric onyx plaques and carved coral links, *length approximately 165mm*; a ring, set with a carved coral, within onyx cylinders, enhanced with brilliant-cut diamonds, *size P*; and a pair of pendent earrings.

• £ 2,600-4,500 € 3,000-5,200 US\$ 3,750-6,500

86

FROM A NOBLE FAMILY

Long chain necklace

Designed as a series of flattened textured oval links, *length approximately 640mm, total gross weight approximately 122 grams*.

£ 2,600-4,500 € 3,000-5,200 US\$ 3,750-6,500



87



88



88



87

FROM A NOBLE FAMILY

Enamel and diamond bangle, Frascarolo

Designed as a lion, applied with reddish-brown enamel and set with brilliant-cut diamonds, *inner circumference approximately 165mm, Italian assay and maker's marks.*

£ 2,000-3,000 € 2,300-3,450 US\$ 2,900-4,300

88

FROM A NOBLE FAMILY

Enamel and diamond parure, Frascarolo

Comprising: a bracelet composed of enamelled paws and tiger's head motif links, with circular-cut ruby eyes and single-cut muzzles, *length approximately 165mm*; a brooch designed as a tiger, applied with enamel, set with single-cut diamonds and circular-cut ruby eyes; and a ring, *size H*, each with *Italian assay and maker's marks.*

£ 2,600-4,500 € 3,000-5,200 US\$ 3,750-6,500



89

89

FROM A NOBLE FAMILY

Enamel, diamond and ruby brooch, Frascarolo

Designed as a dog, set with oval ruby eyes and brilliant-cut diamond eyebrows, the body applied with red enamel, *Italian assay and maker's marks.*

£ 1,500-2,500 € 1,750-2,900 US\$ 2,150-3,600



90

90

FROM A NOBLE FAMILY

Enamel necklace, Frascarolo

Designed as series of geometric open work links, applied with reddish-brownish enamel, *length approximately 420mm, Italian assay and maker's marks.*

£ 2,800-4,200 € 3,250-4,850 US\$ 4,050-6,100



91

91

FROM A NOBLE FAMILY

Enamel, emerald and diamond brooch, Frascarolo

Designed as a lion, set with cabochon emerald eyes, the muzzle, ears and fangs pavé-set with single-cut diamonds, the body applied with red enamel, *Italian assay and maker's marks.*

£ 1,000-2,000 € 1,150-2,300 US\$ 1,450-2,900



92



93

92

FROM A NOBLE FAMILY

Gem set and enamel necklace, 'Navratna', late 19th century and later

Designed as nine pendants, set with varied gemstones, supporting further nine pendants, reverse decorated in polychrome champlevé enamel depicting flora and fauna motifs, *length approximately 460mm.*

• £ 2,600-4,500 € 3,000-5,200 US\$ 3,750-6,500

42

SOTHEBY'S



94

93

FROM A NOBLE FAMILY

Purse

The round hinged cover engraved with initials, to the accordion opening and gold mesh, *total gross weight approximately 95 grams.*

£ 1,000-1,500 € 1,150-1,750 US\$ 1,450-2,150

94

FROM A NOBLE FAMILY

Emerald and diamond ring

Set with a sugarloaf emerald framed by single-cut diamonds, *size N.*

£ 1,000-2,000 € 1,150-2,300 US\$ 1,450-2,900



95

FROM A NOBLE FAMILY

Charm bracelet

Of snaffle link design, suspending three charms set with oval coral cabochons, pearls and coloured gems, *length approximately 165mm, Italian assay and maker's marks.*

Please note that the pearls have not been tested for natural origin.

• £ 1,000-2,000 € 1,150-2,300 US\$ 1,450-2,900

96

FROM A NOBLE FAMILY

Gem set bracelet

Designed as a series of four charms suspended from a curb link chain, *length approximately 175mm, Italian assay mark.*

• £ 1,000-2,000 € 1,150-2,300 US\$ 1,450-2,900

97

FROM A NOBLE FAMILY

Turquoise and ruby necklace

Designed as four rows of collet-set oval cabochon turquoises interspersed by heart-shaped links decorated with a flower set with a circular-cut ruby, *inner circumference approximately 350mm.*

£ 1,000-2,000 € 1,150-2,300 US\$ 1,450-2,900

95
(not to scale)

96
(not to scale)

97
(not to scale)



98



99



100

98

FROM A NOBLE FAMILY

Pair of emerald and diamond brooches, 'La Boutique Line', Van Cleef & Arpels, 1960s

Of lion and lion cub design, the eyes set with circular-cut emeralds, the muzzles pavé-set with brilliant- and single-cut diamonds, each nose applied with black enamel, *signed Van Cleef & Arpels, numbered, French assay and maker's marks.*

£ 3,000-4,200 € 3,450-4,850 US\$ 4,300-6,100

99

FROM A NOBLE FAMILY

Bracelet, Unoerre

Designed as a two colored woven band, *length approximately 190mm, signed UnoAerre, Italian assay and maker's marks.*

£ 1,500-2,500 € 1,750-2,900 US\$ 2,150-3,600

100

FROM A NOBLE FAMILY

Coral and diamond ring, David Webb

Set with a coral cabochon, decorated with brilliant-cut and marquise-shaped diamonds, to a mount of textured gold flames, *size J, signed Webb.*

© £ 1,500-2,500 € 1,750-2,900 US\$ 2,150-3,600



101



102



104

103

101

FROM A NOBLE FAMILY

Moonstone and diamond ring

Set with cabochon moonstones, highlighted with brilliant-cut diamonds, size L.

£ 700-1,800 € 850-2,100 US\$ 1,050-2,600

102

FROM A NOBLE FAMILY

Ruby and diamond ring

Designed as entwined serpents, one set with circular-cut rubies, the other set with single-cut diamonds, each head decorated with either a pear-shaped ruby or diamond, the eyes set with emeralds, size L^{1/2}.

£ 2,200-3,500 € 2,550-4,050 US\$ 3,150-5,100

103

FROM A NOBLE FAMILY

Lady's diamond evening bag

Of basket woven design, the thumbpiece decorated with brilliant-cut diamonds, opening to reveal a mirror, measuring approximately 220 x 130 x 55 mm, gross weight approximately 757 grams.

£ 3,500-5,500 € 4,050-6,400 US\$ 5,100-7,900

104

FROM A NOBLE FAMILY

Aquamarine and ruby ring

Set with a step-cut aquamarine flanked by cabochon rubies, size N.

£ 1,500-2,200 € 1,750-2,550 US\$ 2,150-3,150



105

105

FROM A NOBLE FAMILY

**Aquamarine, ruby and diamond bracelet
'Reflection', Trabert & Hoeffler Mauboussin**

The hinged bangle decorated with polished flower and ribbon scrolls, set with oval aquamarines and cabochon rubies, accented by single-cut diamonds, *inner circumference approximately 170mm, signed Trabert & Hoeffler Mauboussin.*

£ 2,600-4,500 € 3,000-5,200 US\$ 3,750-6,500



106

106

FROM A NOBLE FAMILY

Ruby and diamond bracelet, 1940s

The front of buckle design, set with cabochon and circular-cut rubies and circular-cut diamonds, *length approximately 150mm, assay marks.*

£ 2,200-3,000 € 2,550-3,450 US\$ 3,150-4,300



107

107

FROM A NOBLE FAMILY

Ruby and diamond ring

Of geometric design, set with calibré-cut rubies and brilliant-cut diamonds, *size I, French assay marks.*

£ 1,100-1,800 € 1,300-2,100 US\$ 1,600-2,600



108

108

FROM A NOBLE FAMILY

Pair of citrine and diamond earrings and two rings, one by Cartier

The earrings designed as a graduated line of citrines, highlighted with brilliant-cut diamonds; one ring set with an oval-shaped citrine highlighted with light blue enamel, *signed Cartier, numbered, size P^{1/2}, French assay mark*, the other ring set with a rectangular step-cut citrine, to calibré-cut rubies and single-cut diamond shoulders, *signed Lackritz, size M^{1/2}*.

£ 2,200-3,000 € 2,550-3,450 US\$ 3,150-4,300



110



108



109

FROM A NOBLE FAMILY

Tourmaline and diamond ring

Set with a cabochon pink tourmaline, framed by brilliant-cut diamonds and pink tourmaline cabochons, *size O, Italian assay mark*.

£ 2,200-3,500 € 2,550-4,050 US\$ 3,150-5,100

110

FROM A NOBLE FAMILY

Citrine and diamond bracelet and a ring, Boucheron

The flexible bracelet, set with an emerald-cut citrine, brilliant-cut, baguette diamonds and emerald-cut citrines, *length approximately 150mm*, and a similarly set ring, *size N, each signed Boucheron*.

£ 2,200-3,500 € 2,550-4,050 US\$ 3,150-5,100



111

111

FROM A NOBLE FAMILY

Pair of pearl and diamond earrings, a brooch and a ring

Each earring surmount of scroll design, set with brilliant- and single-cut diamonds, supporting a pearl; a brooch of similar design, set with brilliant-cut and baguette diamonds, *Italian assay and maker's marks*; a ring, set with a pearl, framed by circular- and single-cut diamonds, *size N^{1/2}*.

Accompanied by a gemmological report.

£ 2,800-4,200 € 3,250-4,850 US\$ 4,050-6,100



112



113



112

FROM A NOBLE FAMILY

Citrine and diamond bracelet

The front set with a rectangular step-cut citrine and single-cut diamonds, to a flexible bracelet set with brilliant-cut diamonds, square- and step-cut citrines, *length approximately 175mm*.

£ 1,800-2,500 € 2,100-2,900 US\$ 2,600-3,600

113

FROM A NOBLE FAMILY

Ruby and diamond ring

Of bombé design, set with oval rubies and single-cut and baguette diamonds, *size R, Italian assay mark*.

£ 1,400-2,200 € 1,650-2,550 US\$ 2,050-3,150



114

114

FROM A NOBLE FAMILY

Lady's wristwatch, 'Tubogas', Bulgari

The pear-shaped dial with baton hour indicators, to an expandable tubogas coiled bracelet, *signed Bulgari, numbered, Italian assay mark.*

£ 4,200-6,500 € 4,850-7,500 US\$ 6,100-9,300



116

116

FROM A NOBLE FAMILY

Necklace

Designed as a chain of flat-curb links, *inner circumference approximately 310mm, Italian assay and maker's marks, total gross weight approximately 117 grams.*

£ 1,400-2,200 € 1,650-2,550 US\$ 2,050-3,150



115

115

FROM A NOBLE FAMILY

Bracelet, Weingrill

Designed as a flat curb-link chain, *length approximately 200mm, Italian assay and maker's marks, total gross weight approximately 119 grams.*

£ 1,400-2,200 € 1,650-2,550 US\$ 2,050-3,150



117

117

FROM A NOBLE FAMILY

Enamel and diamond ring, David Webb

Of geometric design, applied with black enamel and set with brilliant-cut diamonds, *size I, signed Webb.*

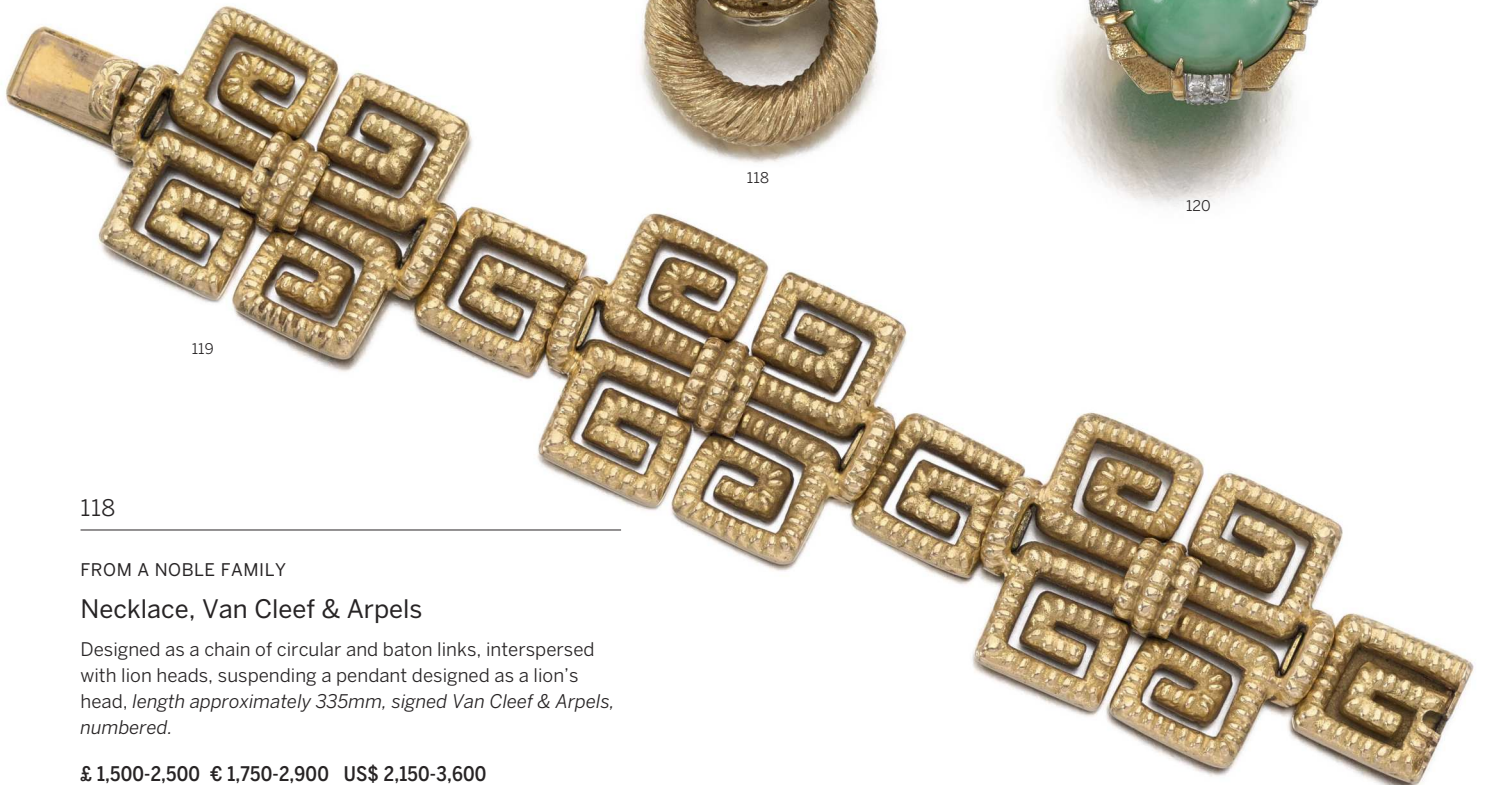
£ 2,200-3,000 € 2,550-3,450 US\$ 3,150-4,300



118



120



119

118

FROM A NOBLE FAMILY

Necklace, Van Cleef & Arpels

Designed as a chain of circular and baton links, interspersed with lion heads, suspending a pendant designed as a lion's head, *length approximately 335mm, signed Van Cleef & Arpels, numbered.*

£ 1,500-2,500 € 1,750-2,900 US\$ 2,150-3,600

119

FROM A NOBLE FAMILY

Bracelet, Van Cleef & Arpels

Composed of textured geometric links, *length approximately 190mm, signed Van Cleef & Arpels, numbered.*

£ 1,500-2,500 € 1,750-2,900 US\$ 2,150-3,600

120

FROM A NOBLE FAMILY

Jade and diamond ring, David Webb

Set with a cabochon jade, mount set with brilliant-cut diamonds, *size Q, signed Webb.*

£ 1,500-2,500 € 1,750-2,900 US\$ 2,150-3,600



121



122

121

FROM A NOBLE FAMILY

Necklace, David Webb

Designed as a line of gold plaques chased in high relief with geometrical motifs, *inner circumference approximately 350mm, signed Webb.*

£ 10,000-13,000 € 11,500-15,000 US\$ 14,400-18,600

122

FROM A NOBLE FAMILY

Ring, David Webb

Of rectangular shape, the front chased in high relief with geometrical motifs, *size M^{1/2}.*

£ 1,400-2,200 € 1,650-2,550 US\$ 2,050-3,150

123

FROM A NOBLE FAMILY

Coral earclips, David Webb

Each set with an oval cabochon coral, within a textured frame, suspended from a high relief geometrical chased surmounts, *signed Webb.*

• £ 2,600-4,500 € 3,000-5,200 US\$ 3,750-6,500



123



124



125



126



127

124

FROM A NOBLE FAMILY

Bracelet, Weingrill, 1950s

Designed as a woven buckle-belt, *length approximately 170mm, Italian assay and maker's marks.*

£ 1,400-2,200 € 1,650-2,550 US\$ 2,050-3,150

125

FROM A NOBLE FAMILY

Lady's wristwatch, Cartier

The rectangular cream dial with Roman numerals and blued steel hands, the winder set with a cabochon sapphire, to a leather bracelet with double deployant clasp, *inner circumference approximately 150mm, signed Cartier, numbered, French assay marks.*

£ 1,400-2,800 € 1,650-3,250 US\$ 2,050-4,050

126

FROM A NOBLE FAMILY

Bracelet, 1940s

Designed as a woven band, *length approximately 190mm, Italian assay and maker's marks, total gross weight approximately 127 grams.*

£ 1,400-2,200 € 1,650-2,550 US\$ 2,050-3,150

127

FROM A NOBLE FAMILY

Coral and diamond ring, David Webb, 1960s

Set with a cabochon coral, framed by brilliant-cut and square diamonds, *size N^{1/2}, signed Webb.*

© £ 1,800-3,200 € 2,100-3,700 US\$ 2,600-4,600



128

FROM A NOBLE FAMILY

Diamond parure

Comprising: a necklace, of gaspé linking, the front set with carved green paste and brilliant-cut diamonds, *inner circumference approximately 380mm*; a bracelet, *length approximately 200mm*; and a pair of earclips, *Italian assay and maker's marks*.

£ 2,800-4,200 € 3,250-4,850 US\$ 4,050-6,100



129



130



131

129

FROM A NOBLE FAMILY

Diamond tiara, early 20th century

Of foliate design, set with cushion-shaped, circular-cut and rose diamonds, *nine diamonds replaced with diamond simulants*, inner circumference approximately 225mm.

£ 4,200-7,000 € 4,850-8,100 US\$ 6,100-10,100

130

FROM A NOBLE FAMILY

Diamond bracelet, 1940s

Of geometric open work design, set with circular- and single-cut diamonds, *length approximately 180mm*.

£ 2,800-4,000 € 3,250-4,600 US\$ 4,050-5,800

131

FROM A NOBLE FAMILY

Diamond ring

Set with a circular-cut diamond, size L^{1/2}, *ring shank damaged*.

£ 2,800-4,200 € 3,250-4,850 US\$ 4,050-6,100





132



134



133

132

Sapphire and diamond ring

Claw-set with an oval sapphire, within a brilliant-cut diamond surround, size P, London hallmarks.

£ 5,000-6,000 € 5,800-6,900 US\$ 7,200-8,600

133

Sapphire and diamond bracelet

Composed of articulated links claw-set with oval sapphires and single-cut diamonds, length approximately 175mm, numbered.

Accompanied by a gemmological report.

£ 2,500-3,500 € 2,900-4,050 US\$ 3,600-5,100

134

Pair of sapphire and diamond ear clips, 1960s

Each designed as textured branch motifs arranged in a radiating design, claw-set with brilliant-cut diamonds and circular-cut sapphires.

£ 1,600-2,600 € 1,850-3,000 US\$ 2,300-3,750



136



137



135

135

Diamond double clip brooch, 1950s

Of flower spray design, set with brilliant-, single-cut and baguette diamonds, *one diamond deficient*.

£ 5,000-7,000 € 5,800-8,100 US\$ 7,200-10,100

136

Sapphire and diamond bracelet

Of rope work design, set with alternating lines of circular-cut sapphires and calibré-cut diamonds, *length approximately 175mm*.

£ 6,000-8,000 € 6,900-9,200 US\$ 8,600-11,500

137

Sapphire and diamond ring

Set with a cushion-shaped sapphire, brilliant-cut and marquise-shaped diamonds, *size M^{1/2}, French assay marks*.

Accompanied by a gemmological report.

£ 2,800-4,200 € 3,250-4,850 US\$ 4,050-6,100



138



139



140

138

Diamond necklace

Of tri-coloured design, the articulated links pavé-set with brilliant-cut diamonds, with collet-set brilliant-cut diamond spacers, length approximately 380mm.

£ 4,000-4,800 € 4,600-5,600 US\$ 5,800-6,900

139

Sapphire and diamond demi-parure, Adione

Comprising: a ring, claw-set with an oval sapphire, the shoulders set with heart-shaped diamonds, size $O^{1/2}$; and a pair of earrings, clip and post fittings, each signed Adione.

£ 5,000-6,500 € 5,800-7,500 US\$ 7,200-9,300

140

Pair of diamond earrings

Each of hinged hoop design, pavé-set to the front of each section with brilliant-cut diamonds, post fittings.

£ 3,500-5,000 € 4,050-5,800 US\$ 5,100-7,200



141



143



142



144

141

FROM A NOBLE FAMILY

Pair of cultured pearls and diamond pendent earrings

Each set with a cultured pearl measuring approximately 19.11 and 19.19mm respectively, to a brilliant- and circular-cut diamond surmount.

£ 1,400-2,200 € 1,650-2,550 US\$ 2,050-3,150

142

FROM A PRIVATE COLLECTION

Ruby, sapphire and diamond ring

Depicting the American flag, set with circular-cut rubies, sapphires and brilliant-cut diamonds, size *N^{1/2}*, *Italian assay and maker's mark*.

£ 1,500-2,200 € 1,750-2,550 US\$ 2,150-3,150

143

PROPERTY OF A LADY

Diamond brooch

Of flower and leaf design, set with marquise-shaped and baguette diamonds.

£ 1,400-2,200 € 1,650-2,550 US\$ 2,050-3,150

144

FROM A PRIVATE COLLECTION

Ruby and diamond ring

Set with a cushion-shaped ruby, within brilliant-cut and marquise-shape diamonds, size *P^{1/2}*, *Italian assay mark*.

Accompanied by a gemmological report.

£ 3,500-5,500 € 4,050-6,400 US\$ 5,100-7,900



145



146

145

Diamond, sapphire and ruby ring, Cartier

Of flower cluster design, mounted *en tremblant*, set with brilliant-cut diamonds and circular-cut sapphires and rubies, size J, signed Cartier, numbered, French assay and maker's marks, case stamped Cartier.

£ 11,000-12,000 € 12,700-13,800 US\$ 15,800-17,200

146

Sapphire and diamond bracelet

Set with carved sapphires and millegrain-set with cabochon sapphires and brilliant-cut diamonds, length approximately 180mm.

£ 3,500-4,500 € 4,050-5,200 US\$ 5,100-6,500



147

147

Emerald and diamond pendant

Set with a polished pear-shaped emerald weighing approximately 7.89 carats, framed by brilliant-cut diamonds, to a brilliant- and single-cut diamond suspension.

Accompanied by a gemmological report.

£ 8,000-12,000 € 9,200-13,800 US\$ 11,500-17,200



148

148

Lady's mother-of-pearl and diamond wristwatch, David Morris

The oval mother-of-pearl dial with a pierced design of stylised chrysanthemums, the bezel, case and articulated link bracelet pavé-set with brilliant-cut diamonds, the winder additionally set with an inverted brilliant-cut diamond, to a double deployant clasp, quartz movement, inner circumference approximately 165mm, dial, case and bracelet signed David Morris, numbered, Swiss assay marks.

£ 22,000-32,000 € 25,300-36,800 US\$ 31,500-45,800



149

149

Emerald and diamond longchain

Composed of tumbled emerald beads, interspersed by briolette diamonds, length approximately 1160mm.

£ 22,000-32,000 € 25,300-36,800 US\$ 31,500-45,800



150

150

Amethyst and emerald ring, 'Python', monture Boucheron

Set with a cushion-shaped amethyst, entwined by a python pavé-set with circular-cut emeralds, to lozenge-shaped ruby eyes, size 1 1/2 (sizing spheres), signed Boucheron, numbered, French assay and maker's marks, case stamped Boucheron.

Accompanied by a copy of the original drawing.

£ 15,000-20,000 € 17,300-23,000 US\$ 21,500-28,700



151

151

Pair of gem set, diamond and cultured pearl necklaces

Each composed of three strands of cultured pearls, to either a circular-cut emerald or ruby and diamond cluster clasp, *each clasp can be worn as a brooch, each length approximately 445mm.*

† £ 3,000-4,000 € 3,450-4,600 US\$ 4,300-5,800



152

152

Ruby and diamond ring

Set with a cabochon ruby, within a surround of brilliant-cut and tapered baguette diamonds, *size L.*

£ 3,000-5,000 € 3,450-5,800 US\$ 4,300-7,200



153

153

Diamond brooch, 1950s

Composed of graduated detachable swallows, set with single-cut diamonds.

£ 2,200-3,500 € 2,550-4,050 US\$ 3,150-5,100



154

154

Emerald, ruby and diamond pendant necklace

The pendant collet-set with a carved emerald, to a surmount set with rose diamonds and cabochon rubies, to a fine-link neckchain, length approximately 465mm.

£ 2,000-3,000 € 2,300-3,450 US\$ 2,900-4,300

155

Lady's diamond wristwatch, Jaeger-LeCoultre, 1960s

The circular silver dial, with dot and baton hour indicators, to a brilliant-cut diamond bezel and brilliant-cut diamond bracelet, mechanical movement, length approximately 167mm, dial signed Jaeger-LeCoultre, numbered, Swiss assay marks.

£ 4,000-7,000 € 4,600-8,100 US\$ 5,800-10,100



155

156

Diamond bracelet

Set with brilliant-cut diamonds, length approximately 185mm, Italian maker's mark.

£ 3,500-4,500 € 4,050-5,200 US\$ 5,100-6,500

157

Emerald and diamond ring

Claw-set with a rectangular step-cut emerald, between tapered baguette diamond shoulders, size N.

Accompanied by Gübelin report no. 16060117, stating that the emerald is of Colombian origin, with indications of minor clarity enhancement.

£ 6,000-8,000 € 6,900-9,200 US\$ 8,600-11,500



157



158



159



160



161

158

Pair of jade and diamond earrings

Each circular jade disc, suspended from a millegrain-set circular-cut diamond suspension, *post fittings*.

£ 4,000-6,000 € 4,600-6,900 US\$ 5,800-8,600

160

Colour change sapphire and diamond ring

Set with a step-cut colour-change sapphire, between baguette diamonds, *size O*.

Accompanied by a gemmological report.

£ 4,000-6,000 € 4,600-6,900 US\$ 5,800-8,600

159

Sapphire and diamond ring

Claw-set with an oval sapphire stated to weigh 5.57 carats, between shoulders set with square diamonds, *size O^{1/2}*.

Accompanied by two gemmological reports.

£ 3,000-5,000 € 3,450-5,800 US\$ 4,300-7,200

161

Emerald, diamond and rock crystal brooch

Set with a frosted carved rock crystal flower, centring upon a rectangular step-cut emerald framed by brilliant-cut diamonds, to a scrolled mount set with circular-cut emeralds and brilliant-cut diamonds, *numbered*.

£ 2,800-4,200 € 3,250-4,850 US\$ 4,050-6,100



162



163



164



165

162

FROM A PRIVATE COLLECTION

Jade, lacquer and diamond case

Of rectangular form, decorated with a carved jade plaque and rose diamonds, the exterior applied with red and black lacquer, measuring approximately 90 x 74 x 12mm, French assay marks.

£ 2,500-3,200 € 2,900-3,700 US\$ 3,600-4,600

163

FROM A PRIVATE COLLECTION

Diamond ring

Of open work design, set with circular-cut, cushion-shaped and rose diamonds, size O^{1/2}.

£ 2,500-3,200 € 2,900-3,700 US\$ 3,600-4,600

164

FROM A PRIVATE COLLECTION

Pearl, enamel and diamond brooch

Designed as a blossomed tree, set with single-cut diamonds and variously shaped pearls, on a green and blue enamel plaque, supporting a baroque pearl.

Accompanied by a gemmological report.

£ 2,500-3,200 € 2,900-3,700 US\$ 3,600-4,600

165

PROPERTY OF A LADY

Cultured pearl and diamond ring

Set to the center with a cultured pearl, between two circular-cut diamonds, size R^{1/2}.

Accompanied by a gemmological report.

£ 2,500-3,000 € 2,900-3,450 US\$ 3,600-4,300



166

166

Diamond brooch, 1920s

Of pierced geometric design, millegrain-set with circular- and single-cut diamonds, *length approximately 189mm, French assay marks.*

£ 7,000-9,000 € 8,100-10,400 US\$ 10,100-12,900

167

Diamond bracelet, early 20th century

Of pierced panel design, millegrain-set with circular and single-cut diamonds, *length approximately 189mm, French assay marks.*

£ 5,000-7,000 € 5,800-8,100 US\$ 7,200-10,100



167



168

168

Onyx and diamond dress set, early 20th century

Comprising: a pair of cufflinks and four buttons, the round ends each composed of onyx and single-cut diamond lines.

£ 3,000-5,000 € 3,450-5,800 US\$ 4,300-7,200



169

169

Rock crystal, tourmaline and diamond clip brooch, Cartier, 1930s

Of geometric design in carved rock crystal. set with calibr -cut tourmalines and brilliant- and circular-cut diamonds, *signed Cartier, indistinctly numbered, pouch stamped Cartier.*

Cf.: Laurence Mouillefarine, *Bijoux Art D co et Avant-Garde*, Norma Editions, New York, 2009, p.115, for a very similar pair of clip brooches by Cartier, set with pink tourmalines and dated to circa 1935.

£ 10,000-15,000 € 11,500-17,300 US\$ 14,400-21,500



171



170

Onyx and diamond bracelet, 1920s

Composed of alternating polished onyx and geometric links, millegrain-set with circular-cut, cushion- and pear-shaped diamonds, *length approximately 187mm.*

£ 10,000-15,000 € 11,500-17,300 US\$ 14,400-21,500

171

Diamond double clip brooch, 1930s

Each of geometric design, set with brilliant-, single-cut and baguette diamonds, *detachable brooch fitting.*

£ 8,500-12,500 € 9,800-14,400 US\$ 12,200-17,900



172



174



173

172

Emerald and diamond ring, 1930s

Claw-set with a step-cut emerald, within a mount of geometric design set with single-cut, baguette and trapezoid diamonds, size *P^{1/2}*, French assay mark.

£ 3,500-6,000 € 4,050-6,900 US\$ 5,100-8,600

173

Emerald and diamond bracelet, 1930s

Of geometric design, set with circular-cut and square diamonds and rectangular step-cut and calibr -cut emeralds, length approximately 187mm.

£ 4,200-7,000 € 4,850-8,100 US\$ 6,100-10,100

174

Emerald and diamond pendant/brooch, 1920s

Designed as a geometric open work plaque, millegrain-set with circular-, single-cut and square diamonds, the centre claw-set with a cushion-shaped emerald.

£ 2,800-5,000 € 3,250-5,800 US\$ 4,050-7,200



PROPERTY OF A NOBLEMAN

LOTS 175-178



175



176



175

PROPERTY OF A NOBLEMAN

Gem set, enamel and diamond pendant/ brooch, late 19th century

Designed in the renaissance revival style, the brooch surmount and detachable pendant composed of open work scrolls applied with blue, red, green and turquoise *basse taille* enamel, set with two pearls and cushion-shaped rubies and diamonds, the reverse with a glazed compartment and chased floral designs.

Please note that the pearls have not been tested for natural origin.

£ 3,000-5,000 € 3,450-5,800 US\$ 4,300-7,200

176

PROPERTY OF A NOBLEMAN

Enamel pocket watch, Movado, 1920s, and two locket pendants, 19th century

The circular pocket watch with silvered dial, applied Arabic numerals and subsidiary second dial, both sides applied with a red and black enamel border, *signed Movado, French import and Swiss assay marks*; together with two lockets, the first designed as a *fausse montre*, the front engraved with the initials HMF within an engine turned surround, the border chased with foliate scroll work; the second of oval form, the exterior engraved with floral scrolls, the interior with a commemorative lock of hair and the christogram IHS with a cross, *dated August 1847*.

£ 1,000-2,000 € 1,150-2,300 US\$ 1,450-2,900



178



177



177

PROPERTY OF A NOBLEMAN

Enamel and diamond pocket watch and pocket watch case, late 18th/early 19th century

The round pocket watch with a white enamel dial applied with Roman numeral hour indicators and Arabic minute indicators, the reverse inset with a miniature portrait of a lady on ivory within a cushion-shaped diamond border and red guilloché enamel surround, *approximately 36mm diameter, British hallmarks, maker's marks, numbered*; together with a pocket watch case, the front with a border of rose diamonds, the reverse with commemorative lock of hair and a bow motif within a border of rose diamonds and a surround of purple guilloché, blue and white enamel, *approximately 46mm diameter*.

• £ 3,000-5,000 € 3,450-5,800 US\$ 4,300-7,200

178

PROPERTY OF A NOBLEMAN

Snuff box, 19th century

Of oval form, the bicoloured exterior engraved in the 18th century taste with *guilloché* panels and swagged pedestals, to twisted, acanthus leaf and laurel leaf borders, *measuring approximately 86 x 43 x 35mm, French prestige marks, weight approximately 136 grams*.

£ 6,000-8,000 € 6,900-9,200 US\$ 8,600-11,500



179

181

180

179

Diamond necklace, circa 1900

Of floral design, the front supporting a drop-shaped floral pendant with a bow surmount, set throughout with cushion-shaped diamonds, *length approximately 400mm, composite.*

£ 15,000-20,000 € 17,300-23,000 US\$ 21,500-28,700

180

Demantoid garnet, seed pearl and diamond bracelet, early 20th century

Designed as a series of floral scroll links, set with seed pearls, circular-cut demantoid garnets and single-cut diamonds, *length approximately 182mm, Austrian assay mark.*

£ 4,000-5,000 € 4,600-5,800 US\$ 5,800-7,200

181

PROPERTY OF A NOBLE FAMILY

Conch pearl and diamond brooch, Tiffany & Co., late 19th century

Designed as a rose bud, set with a conch pearl, the stem and leaves set with circular-cut diamonds, *signed Tiffany & Co.*

Accompanied by a gemmological report.

LITERATURE

Cf.: John Loring, *Tiffany Jewels*, Harry N. Abrams Inc., New York, 1999, pg. 126, for a similar conch pearl and diamond corsage ornament designed by Paulding Farnham for Tiffany & Co.

⊙ £ 3,500-5,600 € 4,050-6,500 US\$ 5,100-8,100



182

182

Diamond tiara, late 19th century

Of foliate design, composed of graduated palmettes spaced with similar smaller motifs, set with cushion-shaped and rose diamonds, *inner circumference approximately 230mm, detaching to form a necklace, length approximately 430mm.*

£ 5,000-8,500 € 5,800-9,800 US\$ 7,200-12,200



183

183

Diamond bangle, circa 1900

Claw-set with a line of cushion-shaped and circular-cut diamonds, the three central diamonds weighing 3.28, 2.50 and 2.35 carats respectively, *inner circumference approximately 175mm, expandable, fitted case stamped J.R. Williams & Son.*

£ 12,000-15,000 € 13,800-17,300 US\$ 17,200-21,500

PROPERTY FROM A PRINCELY COLLECTION

LOTS 184-191



184



185

184

PROPERTY FROM A PRINCELY COLLECTION

Three diamond brooches, late 19th century

Each of foliate design, pinched collet-set with cushion-shaped diamonds, each with detachable brooch fittings.

£ 4,500-6,000 € 5,200-6,900 US\$ 6,500-8,600

185

PROPERTY FROM A PRINCELY COLLECTION

Sapphire and diamond bracelet, late 19th century

The hinged bangle set to the front with cushion-shaped sapphires and circular-cut diamonds, *inner circumference approximately 168mm.*

£ 7,000-11,000 € 8,100-12,700 US\$ 10,100-15,800



186



187



188

186

PROPERTY FROM A PRINCELY COLLECTION

Diamond necklace, late 19th century

Composed of graduated pinched collet-set cushion-shaped diamonds, length approximately 345mm.

£ 6,000-8,000 € 6,900-9,200 US\$ 8,600-11,500

187

PROPERTY FROM A PRINCELY COLLECTION

Pair of diamond earrings, late 19th century

Each of pendent design, the surmount set with a cushion-shaped diamond, supporting a detachable pendant of open work design, set with pear- and cushion-shaped diamonds, post and butterfly fittings.

£ 6,000-8,000 € 6,900-9,200 US\$ 8,600-11,500

188

PROPERTY FROM A PRINCELY COLLECTION

Diamond brooch, Vever, late 19th century

Of lozenge outline, set with cushion-shaped diamonds, the central diamond weighing 1.64 carats, signed Vever, French assay marks, one diamond deficient.

£ 3,500-4,500 € 4,050-5,200 US\$ 5,100-6,500



189



190

189

PROPERTY FROM A PRINCELY COLLECTION

Sapphire and diamond clasp, early 20th century

Collet-set with an oval sapphire, within a surround of cushion-shaped and rose diamonds.

Accompanied by a gemmological report.

£ 4,500-7,000 € 5,200-8,100 US\$ 6,500-10,100

190

PROPERTY FROM A PRINCELY COLLECTION

Natural pearl and diamond ring

Set with two button shaped natural pearls, diameters measuring from approximately 10.6mm and 10.8mm respectively, to shoulders collet-set with circular-cut diamonds, *size J*.

Accompanied by a gemmological report.

£ 7,000-10,500 € 8,100-12,100 US\$ 10,100-15,100



191

191

PROPERTY FROM A PRINCELY COLLECTION

Sapphire and diamond ring, 1960s

Set with an oval sapphire, to shoulders set with marquise-shaped diamonds, *size K^{1/2}*.

Accompanied by a gemmological report.

£ 22,000-32,000 € 25,300-36,800 US\$ 31,500-45,800





SESSION TWO

LONDON
WEDNESDAY
6 JUNE 2018
2 PM

LOTS 192-379





192



193

192

Nephrite, coral, sapphire and onyx ashtray set, Cartier, 1920s

The three circular ashtrays of carved nephrite, each signed *Cartier*, French assay and maker's marks, stacking on a square base of polished onyx with coral posts topped with cabochon sapphires, overall dimensions approximately 88 x 89 x 60mm, French assay and maker's marks.

Cf.: Judy Rudoie, *Cartier: 1900-1939*, British Museum Press, London, 1997, pg. 252 no. 194, for a similar ashtray set in agate, jadeite, onyx and coral, circa 1923.

• £ 5,000-7,000 € 5,800-8,100 US\$ 7,200-10,100



194

193

Pair of cufflinks, Hermès

Each of buckle design, signed *Hermès*, French assay and maker's marks.

£ 1,500-2,000 € 1,750-2,300 US\$ 2,150-2,900

194

Sapphire dress set, Van Cleef & Arpels, 1930s

Comprising: a pair of cufflinks and four buttons, each composed of bi-coloured pyramids collet-set with triangular sapphires, each signed *Van Cleef & Arpels*, numbered.

£ 4,000-6,000 € 4,600-6,900 US\$ 5,800-8,600



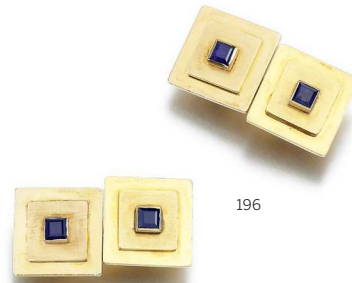
195

195

Pair of cufflinks, Van Cleef & Arpels

Each of reeded baton design, *signed Van Cleef & Arpels, numbered, French assay marks.*

£ 2,600-3,500 € 3,000-4,050 US\$ 3,750-5,100



196

196

Pair of sapphire cufflinks, Cartier, 1970s

Each of tiered square design, set with a square sapphire, to cable link connections, *signed Cartier, one numbered, British hallmarks and maker's mark.*

£ 2,000-3,000 € 2,300-3,450 US\$ 2,900-4,300



197

197

Coral, enamel and diamond brooch, 'Coccinelle', Cartier

Designed as a ladybird, the coral body set with brilliant-cut diamonds and applied black enamel, head set with an oval diamond and legs with brilliant-cut diamonds, *signed Cartier, numbered, French assay and maker's marks.*

• £ 7,000-10,000 € 8,100-11,500 US\$ 10,100-14,400



198

198

Desk clock, 'Mystery', Cartier, 1980s

The concealed white dial signed Cartier, applied with baton and Arabic numerals, visible via reflection through a prism, within a case of geometric design set with panels of simulated lapis lazuli, measuring approximately 102 x 91 x 77mm, signed Cartier, numbered, fitted case stamped Cartier.

£ 3,000-5,000 € 3,450-5,800 US\$ 4,300-7,200

FORMELY IN THE COLLECTION OF HRH KING FAROUK OF EGYPT

LOTS 199-201



199



199

FORMELY IN THE COLLECTION OF HRH KING FAROUK OF EGYPT

Tie pin and cufflinks and ruby and diamond tie pin

The tie pin and cufflinks mounted with coins depicting HRH King Farouk; together with a tie pin, the top decorated with a crown set with calibr -cut rubies and single-cut diamonds, each with original pouch.

£ 220-350 € 300-450 US\$ 350-550

200

FORMELY IN THE COLLECTION OF HRH KING FAROUK OF EGYPT

Diamond brooch, Van Cleef & Arpels

Designed as a bird perched on a coral branch, its eye set with brilliant-cut diamonds, signed Van Cleef & Arpels, numbered, French assay marks.

• £ 700-1,500 € 850-1,750 US\$ 1,050-2,150



200

201

FORMELY IN THE COLLECTION OF HRH KING FAROUK OF EGYPT

Diamond purse handle

The former purse handle adapted as a bracelet, set with brilliant-cut diamond flowers and baguette diamonds, to a rope twist border, inner circumference approximately 260mm, gross weight approximately 124 grams.

£ 2,200-3,500 € 2,550-4,050 US\$ 3,150-5,100



201



HRH King Farouk of Egypt and Princess Irma Capece Minutolo at the gala opening night for the film *War and Peace* at the Teatro dell'Opera in Rome, 1956. Image© Reporters Associati & Archive



202



203

202

Diamond bracelet, Bucherer, 1960s

Composed of articulated palmette links, set with brilliant-cut diamonds, *length approximately 180mm, indistinctly signed, maker's mark.*

£ 8,000-12,000 € 9,200-13,800 US\$ 11,500-17,200



204

203

Coral, emerald and diamond bracelet

The central motif set with cabochon emeralds framed with brilliant-cut diamonds, to a carved coral surround and similar carved coral baton-link bracelet accented with circular-cut emeralds, *length approximately 182mm, maker's marks.*

• £ 3,200-4,000 € 3,700-4,600 US\$ 4,600-5,800

204

Emerald and diamond ring

Claw-set with a step-cut emerald within a marquise-shaped and baguette diamond surround, the shoulders accented with brilliant-cut diamonds, *size L, sizing band.*

£ 5,000-7,000 € 5,800-8,100 US\$ 7,200-10,100



207

205



206

206

Emerald and diamond ring

Claw-set with a pear-shaped emerald within a surround of brilliant-cut diamonds, size *M^{1/2}*.

£ 3,000-5,000 € 3,450-5,800 US\$ 4,300-7,200

205

Diamond necklace, 1950s

Of rope-twist design, the front with graduated quatrefoil motifs set with brilliant-cut diamonds, to brilliant-cut diamond links, length approximately 410mm, indistinct French import assay mark.

£ 8,000-12,000 € 9,200-13,800 US\$ 11,500-17,200

207

Diamond ring

Claw-set with a marquise-shaped diamond of brown tint weighing 2.62 carats, framed by brilliant-cut diamonds, size *I*.

Please note that the diamond of brown tint has not been tested for natural colour origin.

£ 8,500-10,500 € 9,800-12,100 US\$ 12,200-15,100



208

208

FORMERLY IN THE COLLECTION OF HRH THE PRINCESS MARGARET, COUNTESS OF SNOWDON

Diamond parure

Comprising: a necklace, composed of hexagonal plaques and baton shaped linking, the front pavé-set with brilliant-cut diamonds, length approximately 390mm, four extra links; a bangle, inner circumference approximately 170mm; a ring, size L, sizing band; and a pair of pendent ear clips, screw fittings, fitted case.

Accompanied by a certificate of provenance from Kensington Palace, authenticating the property was formally in the collection of Her Royal Highness, The Princess Margaret, Countess of Snowdon.

PROVENANCE

Property from the Collection of Her Royal Highness The Princess Margaret, Countess of Snowdon, Christie's London, 13th June 2006, lot 156.

£ 10,000-12,000 € 11,500-13,800 US\$ 14,400-17,200



HRH Princess Margaret, Countess of Snowdon wearing lot 208, attending a reception to celebrate the 80th birthday of Dame Vera Lynn at the Imperial War Museum, 20th March 1997. Image © Photoshot





209

209

FORMERLY IN THE COLLECTION OF THE DUKE AND DUCHESS OF WINDSOR

Diamond toothpick case, circa 1899-1908

Of elongated form, the exterior decorated with a diagonal bi-coloured reeded pattern, later applied the Duchess of Windsor's crowned monogram 'W' set with rose diamonds, measuring approximately 88 x 19mm, Russian hallmarks and maker's mark.

PROVENANCE

Sotheby's, *The Duke & Duchess of Windsor*, New York, 11-19th September 1997, lot 2548.

£ 3,000-4,000 € 3,450-4,600 US\$ 4,300-5,800



210

210

Diamond cigarette case, Cartier, 1940s

Of rectangular form, the exterior engraved with a bi-coloured spiral design, applied with initials 'GKR' set with single-cut diamonds, opening to reveal a single compartment with inscription, measuring approximately 93 x 74 x 15mm, signed Cartier, gross weight approximately 143 grams, outer case stamped Cartier.

£ 3,000-5,000 € 3,450-5,800 US\$ 4,300-7,200



211

211

Emerald and diamond brooch

Designed as a flower, set with brilliant-cut diamonds and circular-cut emeralds, several emeralds deficient.

£ 1,500-2,200 € 1,750-2,550 US\$ 2,150-3,150



212

212

Lady's diamond and ruby bracelet wristwatch, Kutchinsky, 1961

Of buckle design, set with brilliant-cut diamonds and circular-cut rubies, to a circular cream dial applied with golden-coloured six, twelve and baton hour indicators, *mechanical movement, maximum length approximately 175mm, adjustable, bracelet signed Kutchinsky, dial signed Jaeger-LeCoultre, case back signed Kutchinsky, numbered, British hallmarks.*

£ 4,000-6,000 € 4,600-6,900 US\$ 5,800-8,600



213

213

Ruby powder compact, Tiffany & Co., 1940s

The rectangular reeded case set with calibr -cut rubies, opening to reveal a mirror and lidded powder compartment, *measuring approximately 73 x 67 x 14mm, signed Tiffany & Co, gross weight approximately 152 grams, outer case stamped Tiffany & Co.*

£ 3,000-5,000 € 3,450-5,800 US\$ 4,300-7,200



214

214

Ruby and diamond ring, Asprey

Set with an oval-shaped ruby weighing 5.50 carats between triangular-shaped diamonds, *size O, signed Asprey, British assay marks.*

Accompanied by a gemmological report.

£ 8,000-12,000 € 9,200-13,800 US\$ 11,500-17,200



215



217



216

215

Pair of diamond brooches, Buccellati

Each designed as a thistle, set with brilliant-cut diamonds, signed *Buccellati*.

£ 1,400-2,800 € 1,650-3,250 US\$ 2,050-4,050

216

Bracelet, Van Cleef & Arpels

Designed as a chain composed of textured links, length approximately 209mm, signed *Van Cleef & Arpels*, numbered, French assay marks, gross weight approximately 64 grams.

£ 5,000-7,000 € 5,800-8,100 US\$ 7,200-10,100

217

Gem set and diamond brooch, 1940s

Designed as a bouquet of flowers, set with circular-cut, oval and cabochon rubies, sapphires, tourmalines, garnets and peridots, accented with rose diamonds, brooch fitting signed *Leighton*.

£ 3,200-5,000 € 3,700-5,800 US\$ 4,600-7,200



218



219



220

218

Bracelet, Hermès

Designed as a belt composed of woven linking, to a buckle clasp, *maximum length approximately 215mm, adjustable, signed Hermès, French assay and maker's marks, gross weight approximately 88 grams.*

£ 6,000-8,000 € 6,900-9,200 US\$ 8,600-11,500

219

Gem set and diamond bracelet

Designed as a band of multi-coloured tourmaline cabochons, accented with brilliant-cut diamonds, circular-cut colourless sapphires, chrysoberyls and rubies, *length approximately 182mm.*

£ 7,000-9,000 € 8,100-10,400 US\$ 10,100-12,900

220

Natural pearl and diamond brooch

Designed as a spider, its abdomen set with a natural pearl measuring approximately 13.9 x 12.8 x 9.8mm, its eyes set with single-cut diamonds, to a bar brooch, *Dutch assay and maker's marks.*

Accompanied by a gemmological report.

£ 6,000-8,000 € 6,900-9,200 US\$ 8,600-11,500



221



222



223



224

221

Diamond ring

Collet-set with a circular-cut diamond, size L, Italian maker's mark.

£ 2,800-4,200 € 3,250-4,850 US\$ 4,050-6,100

222

Diamond ring, Cartier

Designed as a full eternity band claw-set with brilliant-cut diamonds, size L, signed Cartier, numbered.

£ 2,000-3,000 € 2,300-3,450 US\$ 2,900-4,300

223

Ruby and diamond demi-parure

Comprising: a pendant of geometric design set with brilliant-cut diamonds and calibré-cut rubies; and a pair of earrings of similar design, additionally suspending briolette diamonds, post fittings.

† £ 4,000-6,000 € 4,600-6,900 US\$ 5,800-8,600

224

Emerald and diamond ring

Collet-set with a step-cut emerald weighing 4.17 carats, within a surround of brilliant-cut diamonds, size O.

Accompanied by a gemmological report.

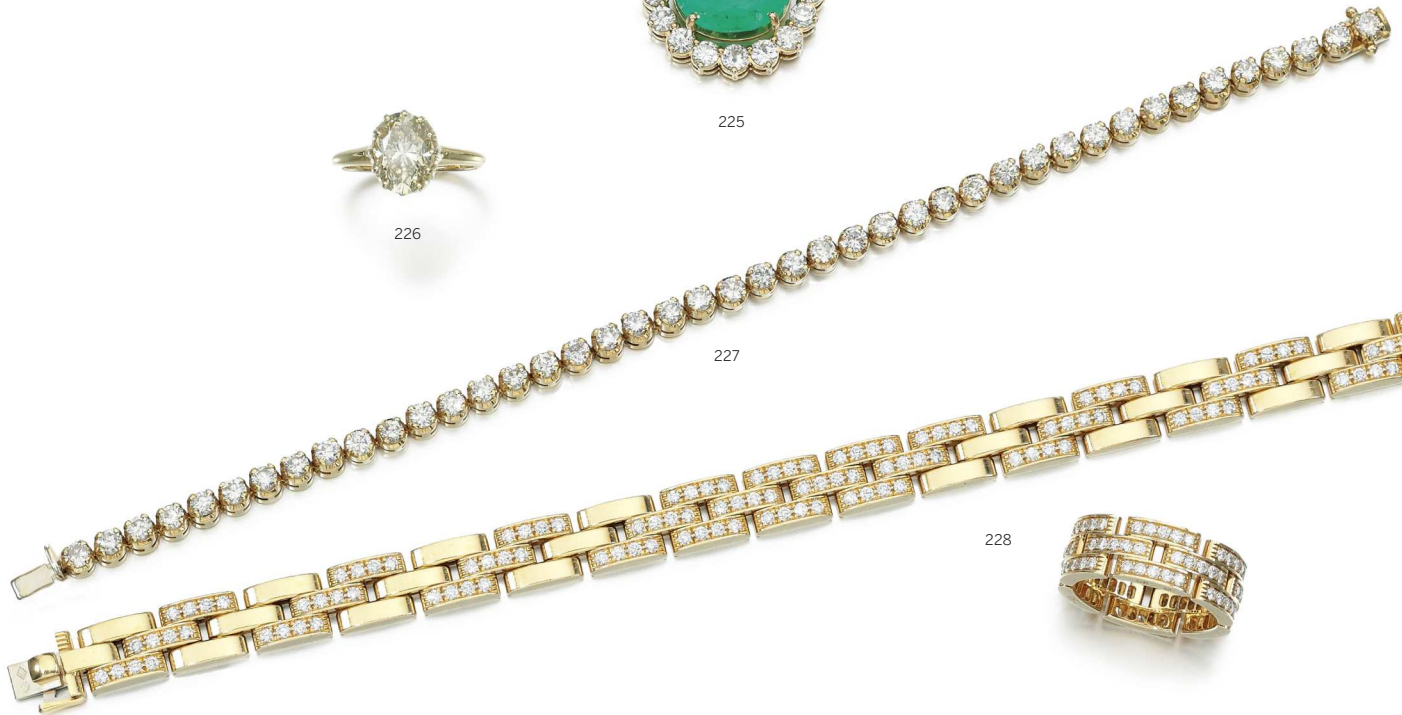
£ 3,000-4,000 € 3,450-4,600 US\$ 4,300-5,800



225



226



227

228

225

Emerald, cultured pearl and diamond necklace

Set with a pear-shaped emerald within a surround of brilliant-cut diamonds, the surmount set with marquise-shaped diamonds, to a necklace composed of two strands of cultured pearls, *length approximately 380mm, French import assay mark.*

£ 4,200-6,500 € 4,850-7,500 US\$ 6,100-9,300

226

Fancy brownish yellow diamond ring

Claw-set with an oval fancy brownish yellow diamond weighing 2.71 carats, *size M, numbered.*

Accompanied by GIA report no. 2125961106, stating that the diamond is Fancy Brownish Yellow, Natural Colour.

† £ 4,500-5,500 € 5,200-6,400 US\$ 6,500-7,900

227

Diamond bracelet

Designed as a line of claw-set brilliant-cut diamonds, *length approximately 190mm, British import hallmarks.*

£ 3,000-4,000 € 3,450-4,600 US\$ 4,300-5,800

228

Diamond demi-parure, 'Maillon Panthère', Cartier

Comprising: a bracelet of brick link design set with brilliant-cut diamonds, *length approximately 185mm, French assay and maker's marks;* and a ring, similarly set, *size P^{1/2}, French maker's marks, each signed Cartier, numbered, each with fitted case stamped Cartier.*

£ 6,000-8,000 € 6,900-9,200 US\$ 8,600-11,500

PROPERTY
OF A LADY
OF TITLE

LOTS 229-238



229



230



231

229

PROPERTY OF A LADY OF TITLE

Necklace

Of snake-link design, length approximately 395mm, gross weight approximately 85 grams.

£ 800-1,200 € 950-1,400 US\$ 1,150-1,750

230

PROPERTY OF A LADY OF TITLE

Lady's diamond wristwatch, Omega, 1970s

The circular golden dial applied with black baton hour indicators, framed by brilliant-cut diamonds, to a tapered textured link bracelet, mechanical movement, length approximately 158mm, signed Omega, numbered.

£ 1,000-1,500 € 1,150-1,750 US\$ 1,450-2,150

231

PROPERTY OF A LADY OF TITLE

Two pairs of cufflinks, 1970s

The first of oval outline and basket weave design; the second of rectangular textured outline, each set with a single-cut diamond.

£ 300-500 € 350-600 US\$ 450-750



233



232



234

232

PROPERTY OF A LADY OF TITLE

Pair of diamond ear clips

Each designed as a flower, the centre set with brilliant-cut diamonds, clip fittings, indistinct French assay marks.

£ 3,000-5,000 € 3,450-5,800 US\$ 4,300-7,200

233

PROPERTY OF A LADY OF TITLE

Pair of ear clips, Van Cleef & Arpels

Each of knotted design, clip fittings, signed Van Cleef & Arpels, numbered.

£ 3,000-5,000 € 3,450-5,800 US\$ 4,300-7,200

234

PROPERTY OF A LADY OF TITLE

Pair of ear clips, Van Cleef & Arpels

Each of scallop design, clip fittings, signed Van Cleef & Arpels, numbered, pouch stamped Van Cleef & Arpels.

£ 3,000-5,000 € 3,450-5,800 US\$ 4,300-7,200



235

235

PROPERTY OF A LADY OF TITLE

Pair of ear clips, Van Cleef & Arpels

Each of rope twist design, *signed Van Cleef & Arpels, numbered.*

£ 1,500-2,000 € 1,750-2,300 US\$ 2,150-2,900



236

236

PROPERTY OF A LADY OF TITLE

Pair of ear clips, 'Trinity', Cartier

Each of hoop design, composed of entwined tri-coloured bands, *signed Cartier, indistinctly numbered, French assay and indistinct maker's marks, case stamped Cartier.*

£ 1,500-2,000 € 1,750-2,300 US\$ 2,150-2,900



237

237

PROPERTY OF A LADY OF TITLE

Pair of ear clips, 'Trinity', Cartier

Each of hoop design, composed of entwined tri-coloured bands, *signed Cartier, numbered, Swiss assay and European convention marks, travel case stamped Cartier.*

£ 2,700-2,900 € 3,100-3,350 US\$ 3,900-4,150



239



238

238

PROPERTY OF A LADY OF TITLE

Pendant, Cartier, 1970s

The circular disc depicting the Taurus zodiac sign, *signed Cartier, numbered, British hallmarks and maker's mark.*

£ 2,600-3,000 € 3,000-3,450 US\$ 3,750-4,300



240

239

Necklace, Bulgari

The curb-link neckchain of tri-coloured design, the centre collet-set with a coin depicting Henry VII, *length approximately 385mm, signed Bulgari, numbered.*

£ 1,500-2,000 € 1,750-2,300 US\$ 2,150-2,900

240

Shagreen, fossilized coral, pearl and diamond brooch, Gilbert Albert

Of abstract design, composed of sections of shagreen and fossilized coral, set with a drop shaped freshwater pearl and accented with textured motifs collet-set with brilliant-cut diamonds, *signed Gilbert Albert, numbered.*

£ 800-1,200 € 950-1,400 US\$ 1,150-1,750



241



243



242

△ 241

Aquamarine and diamond ring, 1940s

Claw-set with a step-cut aquamarine, to a tri-coloured mount of geometric design, the scrolled shoulders pavé-set with single-cut diamonds, size $L^{1/2}$.

£ 3,500-4,500 € 4,050-5,200 US\$ 5,100-6,500

242

Bracelet, Buccellati, 1960s

Composed of a continuous row of textured Lily of the Valley motif links, length approximately 170mm, signed Buccellati, gross weight approximately 75.4 grams.

Accompanied by letter of authenticity from Buccellati.

£ 4,000-6,000 € 4,600-6,900 US\$ 5,800-8,600

243

Diamond double clip brooch, 1940s

Designed as draped and scrolled motifs, set with circular-cut and cushion-shaped diamonds, French import assay marks.

£ 3,500-4,500 € 4,050-5,200 US\$ 5,100-6,500



245



246



244

244

Diamond demi-parure, 1940s

Comprising: a bangle, the wide cuff set with detachable brooch modelled as a flower bud set with brilliant-cut diamonds, *inner circumference approximately 170mm*; and pair of ear clips, *clip fittings, each with assay marks*.

£ 3,500-6,000 € 4,050-6,900 US\$ 5,100-8,600

245

Diamond ring

Collet-set with a brilliant-cut diamond, *size P^{1/2}*.

£ 7,000-10,000 € 8,100-11,500 US\$ 10,100-14,400

246

Diamond brooch, 'Dentelle', Van Cleef & Arpels, circa 1945

Designed as lace accented with brilliant-cut diamonds, centring on a detachable circular-cut diamond of yellow tint weighing 1.32 carats framed by circular-cut diamonds, *signed Van Cleef & Arpels, numbered, one diamond deficient*.

Please note that the diamond of yellow tint has not been tested for natural colour origin.

£ 5,000-7,000 € 5,800-8,100 US\$ 7,200-10,100



247



249



248

247

**Amethyst, turquoise and diamond ring,
Cartier, 1960s**

The centre claw-set with a cabochon amethyst, within a bombé mount set with cabochon turquoises and brilliant-cut diamonds, *size N, signed Cartier, numbered.*

£ 5,000-7,000 € 5,800-8,100 US\$ 7,200-10,100

248

PROPERTY OF A LADY

Turquoise and diamond bracelet

Of open work design, set with cabochon turquoises and brilliant-cut diamonds interconnected with textured tubular links, *length approximately 190mm.*

£ 2,200-3,500 € 2,550-4,050 US\$ 3,150-5,100

249

Diamond brooch, 1940s

Designed as a fish set with cushion-shaped, circular- and single-cut diamonds, *French assay and makers marks.*

£ 2,000-3,500 € 2,300-4,050 US\$ 2,900-5,100



250

FROM A NOBLE FAMILY

Diamond ring

Of *toi et moi* design, claw-set with pear-shaped diamonds weighing respectively 2.90 and 3.09 carats, to tapered baguette diamonds, size O^{1/2}.

£ 5,000-10,000 € 5,800-11,500 US\$ 7,200-14,400

251

FROM A PRIVATE COLLECTION

Coral and diamond wristwatch, Boucheron

The hexagonal dial framed by single-cut diamonds, set within a polished coral disk, to a bracelet set with alternating polished coral and textured links, *mechanical movement, length approximately 175mm, signed Boucheron, French assay marks.*

Accompanied by a gemmological report.

• £ 3,500-5,000 € 4,050-5,800 US\$ 5,100-7,200

252

FROM A PRIVATE COLLECTION

Coral and diamond ring

Set with a coral cabochon, to a reeded mount set with single- and circular-cut diamonds, size N.

• £ 2,500-3,200 € 2,900-3,700 US\$ 3,600-4,600

253

FROM A NOBLE FAMILY

Diamond powder compact, Bulgari

Of square design decorated with brilliant-cut diamonds, opening to reveal a powder compartment and a mirror, *measuring approximately 61 x 67 x 10mm, signed Bulgari, gross weight approximately 151 grams, one diamond deficient.*

£ 1,500-2,500 € 1,750-2,900 US\$ 2,150-3,600



256



255



254

254

Citrine and diamond bracelet, Asprey, 1970s

Of abstract textured design, set with circular-cut citrines and marquise-shaped diamonds, *length approximately 183mm, signed Asprey.*

Ω £ 5,000-7,000 € 5,800-8,100 US\$ 7,200-10,100

255

Lady's diamond wristwatch, Piaget, 1970s

The circular golden dial with dot hour markers, framed by brilliant-cut diamonds, *mechanical movement, length approximately 174mm, signed Piaget, numbered, Swiss assay and European convention marks.*

£ 2,200-3,200 € 2,550-3,700 US\$ 3,150-4,600

256

Diamond cigarette case, Collingwood & Co.

The rectangular case of hammered finish, the thumbpiece collet-set with a brilliant-cut diamond, opening to reveal two compartments with holders, *measuring approximately 90 x 80 x 20mm, British hallmarks and maker's marks, gross weight approximately 269 grams.*

The London-based firm Collingwood & Co. was considered the rival to the Crown Jewellers, Garrard's, fulfilling numerous royal commissions for official gifts, presentation pieces and Orders throughout the late 19th and early 20th centuries. The firm was founded in 1817 by the jeweller Joseph Kitching, and after nearly two centuries as a fixture of London's jewellery industry, finally closed its doors in 2004.

£ 5,000-7,000 € 5,800-8,100 US\$ 7,200-10,100



257



259



258

258

Jadeite, coral and diamond bracelet

Each link set with an oval plaque of pierced and carved jadeite, within a surround set with carved coral and single-cut diamonds, length approximately 190mm.

• £ 3,000-4,000 € 3,450-4,600 US\$ 4,300-5,800

257

Diamond powder compact, Bulgari, 1940s

The square case of engine-turned finish, to a circular-cut diamond thumbpiece, opening to reveal a powder compact and mirror, measuring approximately 75 x 75 x 9mm, signed Bulgari, numbered, Italian maker's mark, gross weight approximately 158 grams.

£ 2,200-3,200 € 2,550-3,700 US\$ 3,150-4,600

259

Carnelian vanity case, Mario Buccellati

The rectangular case of brushed finish, set with an oval carnelian intaglio depicting a dog within an acanthus leaf border, to a hinged clasp, opening to reveal a lidded powder compartment, sliding lipstick holder and mirror, measuring approximately 76 x 62 x 17mm, signed M.Buccellati, total gross weight approximately 197 grams.

£ 6,000-8,000 € 6,900-9,200 US\$ 8,600-11,500



260

260

Demi-parure, 'Night and Day', Cartier

Comprising: a necklace of reversible bi-coloured design, composed of articulated disc motifs, *inner circumference approximately 390mm, signed Cartier, numbered, French assay and maker's marks*; and a pair of ear clips, *partially signed Cartier, numbered, Italian maker's marks, each with fitted case stamped Cartier*.

The necklace accompanied by a Cartier certificate of authenticity.

£ 10,000-20,000 € 11,500-23,000 US\$ 14,400-28,700



261

261

Diamond necklace, Pomellato

Composed of multiple hoops on a neckchain, to a brilliant-cut diamond clasp, *length approximately 435mm, signed Pomellato, Italian maker's mark, gross weight approximately 134 grams*.

£ 3,500-5,500 € 4,050-6,400 US\$ 5,100-7,900



263



262

262

FORMERLY IN THE COLLECTION OF RENATA TEBALDI

Gold and diamond longchain, Weingrill

Of bi-coloured design, composed of flat curb linking, set with single-cut diamonds, length approximately 450mm, Italian maker's mark.

Renata Tebaldi (1922-2004) was an Italian opera singer, renowned for the beauty and power of her soprano voice, as well as her intense, media-fuelled rivalry with Maria Callas. A museum dedicated to her life and works was established at the Villa Pallavicino in Busseto in 2014.

PROVENANCE

Sotheby's Milan, 1st June 1998, Lot 441.

£ 3,000-5,000 € 3,450-5,800 US\$ 4,300-7,200



264

263

Malachite, emerald and diamond pendant, 'Pisces', Van Cleef & Arpels, 1970s

The circular malachite disc with a rope twist border, set with a pair of fish representing the astrological sign Pisces, their eyes set with circular-cut emeralds, centring on a star claw-set with a brilliant-cut diamond, signed Van Cleef & Arpels, numbered, French assay and maker's marks.

£ 4,000-6,000 € 4,600-6,900 US\$ 5,800-8,600

264

Pair of diamond ear clips, Cartier

Each of tri-coloured half hoop design, the central bands pavé-set with brilliant-cut diamonds, post and clip fittings, signed Cartier, numbered, Italian maker's mark, case stamped Cartier.

£ 5,000-7,000 € 5,800-8,100 US\$ 7,200-10,100



265

Four gem set and diamond rings, Adolfo Courier

Comprising: four rings; two pavé-set with brilliant-cut diamonds, accented with a circular-cut sapphire and a circular-cut black diamond respectively; one ring pavé-set with circular-cut black diamonds, accented with a brilliant-cut diamond; and one ring pavé-set with circular-cut sapphires, accented with a brilliant-cut diamond, each size M, three rings signed Adolfo Courier, one unsigned, each with Italian maker's marks.

£ 1,800-2,200 € 2,100-2,550 US\$ 2,600-3,150

266

PROPERTY FROM A EUROPEAN PRIVATE COLLECTION Sapphire and diamond ring

Collet-set with an oval sapphire, within a surround pavé-set with brilliant-cut diamonds, size N.

£ 5,000-6,000 € 5,800-6,900 US\$ 7,200-8,600

267

267

Gem set parure, Bulgari

Comprising: a bracelet composed of curved fluted links, alternating with collet-set oval amethysts and pink tourmalines, inner circumference approximately 160mm, a pair of earrings set with oval tourmalines, clip and post fittings, and a ring, size E, each signed Bulgari, bracelet and earrings numbered, the bracelet with Italian maker's mark.

£ 4,000-6,000 € 4,600-6,900 US\$ 5,800-8,600



269



268



270

268

PROPERTY FROM A EUROPEAN PRIVATE COLLECTION

Diamond set bangle, Pederzani

The flexible bangle pavé-set to the front with sections of brilliant-cut diamonds, *inner circumference approximately 170mm.*

£ 2,000-3,000 € 2,300-3,450 US\$ 2,900-4,300

269

Emerald, diamond and cultured pearl necklace and a pair of earrings, Bulgari

Comprising: a necklace, the front set with three carved emeralds alternating with circular-cut diamonds and cultured pearls, to curb chain linking, *length approximately 374mm;* and a pair of earrings set with carved emeralds and baguette diamonds, *post and clip fittings, each piece signed Bulgari, ear clips numbered.*

£ 20,000-30,000 € 23,000-34,500 US\$ 28,700-43,000

270

PROPERTY FROM A EUROPEAN PRIVATE COLLECTION

Pair of diamond ear clips

Each of hoop design, set with brilliant-cut diamonds.

£ 2,500-3,500 € 2,900-4,050 US\$ 3,600-5,100



271



272

271

Diamond demi-parure

Comprising: a necklace designed as a graduated row of heart and fleurs-de-lys drops, the front pavé-set with brilliant-cut diamonds, *length approximately 385mm*; and a pair of pendent earrings of matching design, *clip and post fittings, Italian maker's marks*.

£ 2,000-3,000 € 2,300-3,450 US\$ 2,900-4,300

272

Lapis lazuli and diamond demi-parure

Comprising: a pair of earrings, each of quatrefoil design, set with polished sections of lapis lazuli and pavé-set with brilliant-cut diamonds, *clip and post fittings*; and a ring of similar design, *size K, each with indistinct assay marks*.

£ 3,000-5,000 € 3,450-5,800 US\$ 4,300-7,200



273



274



275

273

PROPERTY OF A LADY

Pair of diamond ear clips, Bulgari

Each collet-set with a Roman *quinarius* coin, within a hexagonal mount pavé-set with brilliant-cut diamonds, *signed Bulgari, Italian assay and maker's marks.*

£ 3,000-4,000 € 3,450-4,600 US\$ 4,300-5,800

274

PROPERTY OF A LADY

Necklace, Bulgari

Designed as an oval link chain interspersed with collet-set Roman coins, *length approximately 775mm, gross weight approximately 252 grams, signed Bulgari, Italian maker's mark.*

£ 12,000-18,000 € 13,800-20,700 US\$ 17,200-25,800

275

FROM A PRIVATE COLLECTION

Emerald and diamond ring

Set with a step-cut emerald within a surround of rose diamonds, the shoulders modelled as two angels, to a mount engraved with scroll designs, *size O.*

Accompanied by a gemmological report.

£ 3,000-4,000 € 3,450-4,600 US\$ 4,300-5,800



276



278



277

276

Sapphire and diamond pendent necklace

The pendent centred on a collet-set cabochon sapphire, within a mount set with brilliant-cut and baguette diamonds, to a fancy-link necklace, the front links collet-set with brilliant-cut diamonds, *length approximately 430mm.*

£ 5,000-6,000 € 5,800-6,900 US\$ 7,200-8,600

277

Sapphire and diamond bracelet

Claw-set with brilliant-cut diamonds and circular-cut sapphires, *inner circumference approximately 170mm.*

£ 3,200-5,000 € 3,700-5,800 US\$ 4,600-7,200

278

Pair of diamond earclips, Angela Cummings for Tiffany & Co.

Each of concave annular design, framed by graduated brilliant-cut diamonds, *signed Tiffany & Co Cummings, case stamped Tiffany & Co.*

£ 4,000-6,000 € 4,600-6,900 US\$ 5,800-8,600



279



280



281

279

Diamond, tsavorite garnet and lacquer necklace, 'Panthère', Cartier

The panther head set with pear-shaped tsavorite garnet eyes and applied with black lacquer, the baton links alternately set with brilliant-cut diamonds, *length approximately 365mm, signed Cartier, numbered, French assay and maker's marks.*

£ 6,000-10,000 € 6,900-11,500 US\$ 8,600-14,400

280

Lady's cultured pearl and diamond wristwatch, 'Tortue', Cartier

The tonneau-shaped white dial applied with Roman numerals, the bezel and clasp set with brilliant-cut diamonds, to a bracelet of cultured pearls and sphere-linking, *mechanical movement, length approximately 178mm, signed Cartier, numbered, French assay and maker's marks, case stamped Cartier.*

£ 9,000-12,000 € 10,400-13,800 US\$ 12,900-17,200

281

Pair of diamond earrings, Cartier

Each of half hoop design, pavé-set to one side with brilliant-cut diamonds, *clip and post fittings, signed Cartier, numbered, French assay and maker's marks, case stamped Cartier.*

£ 2,000-3,000 € 2,300-3,450 US\$ 2,900-4,300



282



285



283



284

282

FROM A PRIVATE COLLECTION

Enamel parure

Comprising: a necklace, the chain of square-shaped linking supporting an open work rectangular pendant/brooch designed as an open work plaque depicting Egyptian motifs, applied with dark blue, turquoise and red enamel, *length approximately 410mm*; a ring, *size N^{1/2}*; and a pair of ear clips, *total gross weight approximately 261 grams*.

£ 4,000-6,000 € 4,600-6,900 US\$ 5,800-8,600

283

FROM A PRIVATE COLLECTION

Diamond ring

Set with a step-cut diamond weighing 2.60 carats, between shoulders set with triangular diamonds, *size S*.

£ 5,000-7,000 € 5,800-8,100 US\$ 7,200-10,100

284

FROM A PRIVATE COLLECTION

Diamond brooch

Designed as a bar set with circular-cut diamonds.

£ 2,500-3,200 € 2,900-3,700 US\$ 3,600-4,600

285

FORMERLY IN THE COLLECTION OF HRH KING FARAOUK OF EGYPT

Lady's wristwatch, 1930s

The rectangular cream dial applied with circular indicators, decorated on either side with blue enamel and Roman numerals, to a bracelet of chevron linking, *mechanical movement, length approximately 170mm, French assay and partial maker's mark*.

£ 1,500-2,200 € 1,750-2,550 US\$ 2,150-3,150



286

286

Gem set, enamel and diamond necklace, Van Cleef & Arpels

The hinged collar with a central section pavé-set with brilliant-cut diamonds and set with polished carnelian, lapis lazuli, onyx and chalcedony in the form of two facing birds in the ancient Egyptian style, between sections of polished chrysoprase bordered with black enamel, *inner circumference approximately 350mm, signed Van Cleef & Arpels, numbered, French assay and maker's marks.*

£ 10,000-15,000 € 11,500-17,300 US\$ 14,400-21,500



288

287

Diamond ring

The wide band collet-set with a step-cut diamond between shoulders set with square diamonds, *size S^{1/2}, Italian maker's mark.*

£ 4,600-6,600 € 5,300-7,600 US\$ 6,600-9,500

288

Sapphire and diamond ring

Set with a cushion-shaped sapphire, to shoulders set with baguette diamonds, *size O.*

Accompanied by a gemmological report.

£ 8,000-12,000 € 9,200-13,800 US\$ 11,500-17,200



289



290



291

289

Diamond and onyx ring, Boucheron, 1970s

Of bombé design, set with a cushion-shaped diamond weighing 2.60 carats, between square diamonds, to a fluted onyx surround, size L^{1/2}, signed Boucheron, French assay and maker's marks.

£ 8,000-12,000 € 9,200-13,800 US\$ 11,500-17,200

290

Diamond ring

Of bombé design, centring on three brilliant-cut diamonds, the central stone weighing 1.21carats, to a fluted surround further accented with brilliant-cut diamonds, size M.

£ 2,500-4,000 € 2,900-4,600 US\$ 3,600-5,800

291

Yellow sapphire, citrine, emerald and diamond brooch, David Webb, 1960s

Designed as a scorpion, set with brilliant-cut diamonds, marquise-shaped and step-cut yellow sapphires and a step-cut citrine, the eyes claw-set with cabochon emeralds, signed Webb, several diamonds deficient.

£ 11,000-15,000 € 12,700-17,300 US\$ 15,800-21,500



292

292

Quartz and diamond bracelet, 1970s

The articulated bracelet set with rectangular step-cut smoky quartz, to a brilliant-cut diamond clasp, *inner circumference approximately 170mm.*

† £ 6,000-7,000 € 6,900-8,100 US\$ 8,600-10,100



293



293

Mother-of-pearl and diamond demi-parure, 'Rose de Noël', Van Cleef & Arpels

Comprising: a brooch, designed as a flower, the petals set with polished mother-of-pearl, centring on brilliant-cut diamonds; and a pair of ear clips, *each signed Van Cleef & Arpels, numbered, French assay and maker's marks.*

£ 26,000-35,000 € 29,900-40,200 US\$ 37,200-50,500



294



295



296

294

Diamond ring, Wendy Ramshaw CBE RDI, 1989

Collet-set with a circular-cut diamond within a square surround, size T, British hallmark and sponsor's mark for Wendy Ramshaw.

£ 5,000-7,000 € 5,800-8,100 US\$ 7,200-10,100

295

Emerald and diamond ring

Collet-set with a rectangular step-cut emerald, to shoulders set with baguette diamonds, size L^{1/2}, British hallmark.

Accompanied by a gemmological report.

† £ 10,000-15,000 € 11,500-17,300 US\$ 14,400-21,500

296

Collection of rings, Wendy Ramshaw CBE RDI, 1970s

The collection of eleven stackable rings comprising: eight collet-set with a circular-cut diamond; one ring collet-set with a cabochon peridot; and two plain bands, sizes T^{1/2} to U^{1/2}, each with British hallmarks and sponsor's mark for Wendy Ramshaw; together with one Lucite and one bronze ring stack.

£ 8,000-12,000 € 9,200-13,800 US\$ 11,500-17,200



297



298



299

297

Necklace, Cartier, 1970s

The pendant designed as the golden fleece, to a collar necklace, inner circumference approximately 380mm, signed Cartier, numbered, French assay and maker's marks, case stamped Cartier.

£ 2,200-2,400 € 2,550-2,800 US\$ 3,150-3,450

298

Emerald bracelet, Ashley Hicks

Designed as a stylised fishnet with three fish, each set with a cabochon emerald, length approximately 175mm.

The present bracelet is part of a one-off jewellery collection produced by Ashley Hicks in the early 2000's. Hicks (b. 1963), has been a highly influential force in British design for decades. Having trained at the Architectural Association in London, he worked briefly with his father, the renowned interior designer David Hicks (1929-1998), before founding his own practice. Throughout his career, Hicks has turned his talents to furniture and fabric design, undertaken many large-scale architectural and interior design projects, and authored numerous books on the subject.

£ 3,000-5,000 € 3,450-5,800 US\$ 4,300-7,200

299

Opal, green sapphire and diamond ring

Claw-set with an opal cabochon, to shoulders set with circular-cut green sapphires and cushion-shaped diamonds, size L^{1/2}.

£ 2,600-3,200 € 3,000-3,700 US\$ 3,750-4,600



300

300

Ruby, onyx and diamond pendent necklace, "Madonna of Port Lligat", Salvador Dalí

The pendant designed as an oval plaque with scrolled sides set with polished onyx, brilliant-cut diamonds and calibré-cut rubies, the centre with an abstract textured figure of the Madonna of Port Lligat with arms outstretched, an open door in her chest, *signed Dalí, numbered, maker's marks*, to a bi-coloured fancy-link neckchain, *length approximately 550mm, fitted case stamped Dalí*.

Accompanied by a certificate of authenticity from Exmundart.

£ 26,000-30,000 € 29,900-34,500 US\$ 37,200-43,000



301

301

Necklace, Salvador Dalí

Designed as the figure of Christ, suspended from a necklace composed of a series of nail shaped links, *length approximately 740mm, can be shortened to 545mm, signed Dalí, numbered*.

£ 3,500-5,500 € 4,050-6,400 US\$ 5,100-7,900



302

302

Pair of diamond earrings, Van Cleef & Arpels, 1960s

Each designed as a textured double hoop, set with brilliant-cut diamonds, *clip and post fittings, signed Van Cleef & Arpels, numbered*.

£ 8,000-12,000 € 9,200-13,800 US\$ 11,500-17,200





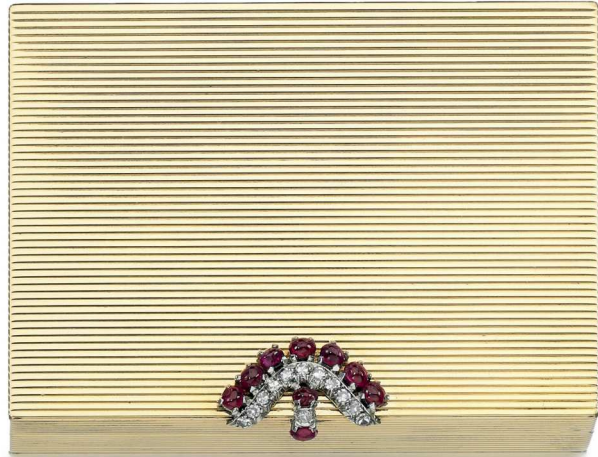
303



304



305



306

303

Diamond ring

Claw-set with a brilliant-cut diamond weighing 2.21 carats, size N, Italian maker's mark.

Accompanied by a gemmological report.

£ 9,000-12,000 € 10,400-13,800 US\$ 12,900-17,200

304

Diamond ring

Claw-set with a brilliant-cut diamond weighing 1.62 carats, size N, Italian maker's marks.

Accompanied by a gemmological report.

£ 4,500-6,000 € 5,200-6,900 US\$ 6,500-8,600

305

Bracelet, Cartier, 1995

Designed as an articulated chain composed of oval links, length approximately 205mm, signed Cartier, numbered, French assay and maker's marks, gross weight approximately 61 grams.

£ 4,000-6,000 € 4,600-6,900 US\$ 5,800-8,600

306

Ruby and diamond compact, Illario, 1960s

Of rectangular shape, the exterior of reeded design, set with a palmette motif of cabochon rubies and single-cut diamonds, opening to reveal a mirror and lidded powder compartment, measuring approximately 75 x 56 x 19mm, numbered, Italian maker's marks, gross weight approximately 187 grams.

£ 4,000-6,000 € 4,600-6,900 US\$ 5,800-8,600



309

307



308

308

Ruby and diamond ring

Claw-set with a cabochon ruby within a tapered baguette and brilliant-cut diamond frame, size O.

£ 2,000-4,000 € 2,300-4,600 US\$ 2,900-5,800

307

Ruby and diamond necklace

Composed of links of cluster design, each set with circular-cut and oval rubies and single-cut diamonds, length approximately 435mm.

£ 4,200-7,000 € 4,850-8,100 US\$ 6,100-10,100

309

Diamond brooch

The detachable parrot set with single-cut diamonds and cabochon emerald eye, within a scrolled frame set with brilliant- and single-cut diamonds.

£ 1,200-2,200 € 1,400-2,550 US\$ 1,750-3,150



310



311



312

310

Lady's ruby evening bag, 1960s

Of basket woven design, the thumbpiece set with calibre-cut rubies, opening to reveal a compartment, *measuring approximately 152 x 80 x 30mm, numbered, French export assay and maker's marks, British import marks and retail marks, total gross weight approximately 244.7 grams, cased.*

£ 4,000-7,000 € 4,600-8,100 US\$ 5,800-10,100

311

Pair of ruby and diamond earrings, early 20th century

Each set with a cushion-shaped ruby, framed by circular-cut diamonds, *post fittings.*

Accompanied by a gemmological report.

£ 10,000-15,000 € 11,500-17,300 US\$ 14,400-21,500

312

Diamond brooch, Cartier, 1960s

Designed as a flower, set with circular-, single-cut, cushion-shaped and baguette diamonds, *signed Cartier, French assay and maker's marks, case stamped Cartier.*

£ 7,000-11,000 € 8,100-12,700 US\$ 10,100-15,800



313

314

313

Diamond demi-parure, Chaumet

Comprising: a necklace, composed of floral motifs, set with brilliant-cut diamonds, *length approximately 405mm*; and a bracelet of similar design, *length approximately 173mm*, each signed Chaumet, French assay and maker's marks.

£ 10,000-15,000 € 11,500-17,300 US\$ 14,400-21,500

314

Ruby and diamond ring

Claw-set with an oval ruby, framed by brilliant-cut diamonds, to brilliant-cut diamond shoulders, size N, French assay and maker's mark.

Accompanied by a gemmological report.

£ 20,000-30,000 € 23,000-34,500 US\$ 28,700-43,000



315



316



317

316

Turquoise and diamond bracelet, Cartier, 1970s

Set with turquoise cabochons and brilliant-cut diamonds, length approximately 173mm, signed Cartier, numbered, French assay marks.

£ 8,000-10,000 € 9,200-11,500 US\$ 11,500-14,400

315

Diamond vanity case, 1960s

The rectangular case of engine-turned finish, set with a single-cut diamond buckle clasp, opening to reveal a mirror, lipstick holder, and two lidded compartments, measuring approximately 137 x 64 x 16mm, Italian maker's mark, total gross weight approximately 368 grams.

£ 5,500-6,500 € 6,400-7,500 US\$ 7,900-9,300

317

Turquoise, coral and diamond bracelet, 1960s

Of articulated design, set with turquoise and coral cabochons and brilliant-cut diamonds, length approximately 197mm, Italian maker's mark.

Accompanied by a gemmological report.

• £ 2,800-4,200 € 3,250-4,850 US\$ 4,050-6,100



319



318

318

Diamond brooch, Sabbadini

Designed as a flower, pavé-set with brilliant-cut diamonds, signed Sabbadini, Italian maker's mark.

Accompanied by a photograph of the brooch from Sabbadini.

£ 11,000-15,000 € 12,700-17,300 US\$ 15,800-21,500

319

Diamond vanity case, Mario Buccellati, 1970s

The rectangular case of brushed finish, set with brilliant- and single-cut diamonds, to a single-cut diamond thumbpiece, opening to reveal a mirror, two lidded compartments and a lipstick holder, measuring approximately 155 x 55 x 15mm, signed M. Buccellati, total gross weight approximately 386.7 grams, case stamped M. Buccellati.

£ 2,800-4,200 € 3,250-4,850 US\$ 4,050-6,100



320

321

320

Gem set and diamond demi-parure, 'Meli Melo', Cartier

Comprising: a necklace, set with variously cut gemstones including tourmaline, moonstone, chalcedony, citrine, iolite, blue topaz and diamonds, to knife-edge linking, suspending a similarly set pendant, length approximately 435mm; and a pair of pendent earrings, clip and post fittings, each piece signed Cartier, numbered, French assay and maker's marks, fitted cases stamped Cartier.

£ 10,000-15,000 € 11,500-17,300 US\$ 14,400-21,500

321

Coloured sapphire and diamond ring

Claw-set with a cushion-shaped purple sapphire, framed by brilliant-cut and tapered baguette diamonds, size N, British hallmarks.

£ 3,000-4,000 € 3,450-4,600 US\$ 4,300-5,800



322



323

322

Pair of cultured pearl, coloured diamond and diamond earrings, Cartier

Each surmount set with a square diamond of yellow tint, to a line of brilliant-cut diamonds supporting a cultured pearl, *post fittings, signed Cartier, numbered, European convention marks, case stamped Cartier.*

Please note that the diamonds of yellow tint have not been tested for natural colour origin.

£ 10,000-15,000 € 11,500-17,300 US\$ 14,400-21,500



324



323

Diamond bangle, 'Love', Cartier

The hinged bangle pavé-set and collet set with brilliant-cut diamonds, *inner circumference approximately 155mm, signed Cartier, numbered, Italian maker's mark, together with a screwdriver, fitted case stamped Cartier.*

£ 15,000-20,000 € 17,300-23,000 US\$ 21,500-28,700

324

Pair of diamond and kunzite earrings and a ring

Each earring set with a pear-shaped kunzite framed by brilliant-cut and tapered baguette diamonds, suspended from a line of brilliant-cut and tapered baguette diamonds, *post fittings, British hallmarks*; and a ring set with an oval kunzite, framed by brilliant-cut and tapered baguette diamonds, *size L^{1/2}, British hallmarks.*

£ 3,000-4,000 € 3,450-4,600 US\$ 4,300-5,800



325



326



327

325

Yellow sapphire and diamond pendant

Claw-set with a pear-shaped yellow sapphire, to a scrolled surmount set with baguette diamonds.

Accompanied by a gemmological report.

£ 7,000-9,000 € 8,100-10,400 US\$ 10,100-12,900

326

Diamond pendant and pair of diamond earrings

Comprising: a pendant set with a brilliant-cut diamond weighing 0.47 carats; and a pair of studs, each set with a brilliant-cut diamond, weighing 0.54 and 0.57 carats respectively, *post fittings*.

Accompanied by three gemmological reports.

£ 1,500-2,200 € 1,750-2,550 US\$ 2,150-3,150

327

Diamond ring

The eternity band set with brilliant-cut and baguette diamonds, *size N*.

† £ 2,500-3,500 € 2,900-4,050 US\$ 3,600-5,100



328

328

Pair of multicoloured sapphire and diamond earrings

Of articulated tassel design, set with circular-cut and oval sapphires of various tints and brilliant-cut diamonds, *post fittings, British hallmarks.*

£ 3,000-4,000 € 3,450-4,600 US\$ 4,300-5,800



329

329

Kunzite and diamond necklace

The pendant set with a pear-shaped kunzite, within a border set with brilliant-cut diamonds, to a cable-link longchain spectacle-set with brilliant-cut diamonds, *length approximately 970mm, Italian maker's mark.*

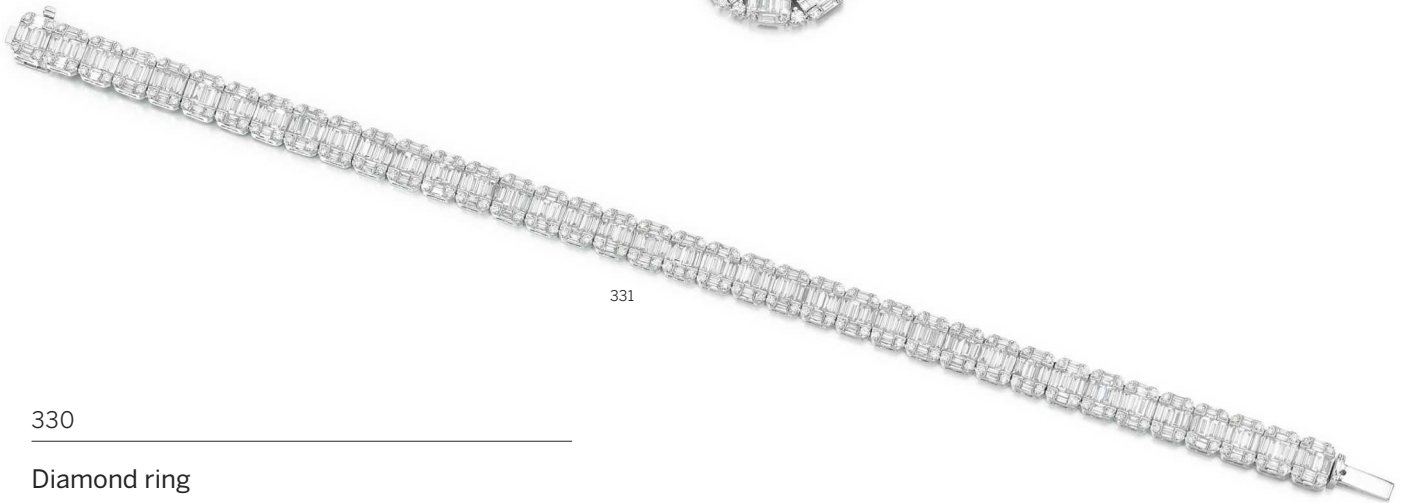
£ 2,600-3,500 € 3,000-4,050 US\$ 3,750-5,100



330



332



331

330

Diamond ring

Set with three rectangular step-cut diamonds, the central diamond weighing 1.36 carats, size *K*.

£ 4,500-5,500 € 5,200-6,400 US\$ 6,500-7,900

331

Diamond bracelet

Set with brilliant-cut and baguette diamonds, *length approximately 178mm*.

† £ 4,000-5,000 € 4,600-5,800 US\$ 5,800-7,200

332

Pair of diamond earrings

Of pendent design, set with brilliant-cut, marquise-shaped, square-cut, tapered baguette and baguette diamonds, *post fittings*.

† £ 5,500-7,500 € 6,400-8,700 US\$ 7,900-10,800



333

333

Diamond necklace

The front composed of three articulated lines set with brilliant-cut, marquise-shaped, square and baguette diamonds, to a similarly set necklace, *length approximately 425mm*.

† £ 18,000-22,000 € 20,700-25,300 US\$ 25,800-31,500



334



335

334

Diamond ring, early 20 century

Set with a rectangular step-cut diamond weighing 4.11 carats, to single-cut diamond shoulders, *ring shank damaged, one diamond deficient*.

£ 10,500-14,500 € 12,100-16,700 US\$ 15,100-20,800

335

Fancy orange-brown diamond ring

Claw-set with a round-cornered rectangular modified brilliant-cut fancy brown-orange diamond weighing 3.60 carats, to shoulders set with brilliant-cut diamonds, *size L^{1/2}*.

Accompanied by GIA report no. 2181887372, stating that the central diamond is Fancy Brown-Orange, Natural Colour, I2 Clarity.

£ 15,000-20,000 € 17,300-23,000 US\$ 21,500-28,700



336



337

336

Cultured pearl and diamond necklace

Composed of graduated black cultured pearls, measuring from approximately 10.00 to 12.50mm, to a brilliant-cut diamond clasp, length approximately 455mm.

† £ 2,000-3,000 € 2,300-3,450 US\$ 2,900-4,300

337

Peridot and diamond ring

Claw-set with a faceted peridot framed by brilliant-cut and tapered baguette diamonds, size *M^{1/2}*, British hallmarks.

£ 3,000-4,000 € 3,450-4,600 US\$ 4,300-5,800



338

338

Diamond ring, 'Trinity', Cartier

Composed of three interlocking bands pavé-set with brilliant-cut diamonds, size *J*, signed *Cartier*, numbered, French assay and maker's marks.

£ 3,500-5,000 € 4,050-5,800 US\$ 5,100-7,200



339



340



341

339

Ring, Bulgari

Composed of coiled flexible gas pipe linking, size *M*, signed Bulgari, Italian maker's mark.

£ 700-1,400 € 850-1,650 US\$ 1,050-2,050

340

Coral and diamond bracelet

Of buckle design, composed of carved coral and pavé-set brilliant-cut diamond links, length approximately 180mm.

• £ 3,200-4,500 € 3,700-5,200 US\$ 4,600-6,500

341

Diamond ring

Claw-set with a circular-cut diamond weighing 1.97 carats, size *Q*.

£ 4,000-6,000 € 4,600-6,900 US\$ 5,800-8,600



342



344



343



345

342

PROPERTY OF A LADY

Diamond brooch

Of cluster design, set with brilliant-, step-cut, pear- and marquise-shaped diamonds, *Italian maker's mark*.

£ 1,500-2,200 € 1,750-2,550 US\$ 2,150-3,150

343

PROPERTY OF A LADY

Diamond necklace

Designed as a line of graduated brilliant-cut diamonds, *length approximately 190mm*.

£ 10,000-15,000 € 11,500-17,300 US\$ 14,400-21,500

344

FROM A PRIVATE COLLECTION

Pair of diamond earrings

Each suspending a square step-cut diamond weighing approximately 1.14 and 1.24 carats respectively, to a baguette diamond surmount, *Italian maker's marks*.

£ 2,200-3,500 € 2,550-4,050 US\$ 3,150-5,100

345

Aquamarine, mother-of-pearl and diamond brooch, Fürst

Of lozenge-shape, set with a step-cut aquamarine between mother-of-pearl and brilliant-cut pavé-set diamond panels, framed by baguette diamonds, *signed Fürst*.

£ 3,000-4,000 € 3,450-4,600 US\$ 4,300-5,800



346



347



348

346

Diamond necklace, 1950s

Of scroll design, the front set with circular- and single-cut and baguette diamonds, suspending a shield-shaped diamond, to a rope twist neckchain, *length approximately 370mm.*

£ 3,500-5,000 € 4,050-5,800 US\$ 5,100-7,200

347

Diamond brooch, 1950s

Designed as a bouquet, set with circular- and single-cut and baguette diamonds, *converts into two clip brooches, accompanied by fitted case.*

£ 2,800-4,200 € 3,250-4,850 US\$ 4,050-6,100

348

Diamond ring

Claw-set with a step-cut diamond weighing 5.14 carats, to marquise-shaped diamond shoulders, *size N.*

£ 8,500-10,000 € 9,800-11,500 US\$ 12,200-14,400



349



350



351

349

Diamond necklace, 1960s

Set to one side with a detachable brooch designed as a spiral set with brilliant-cut, baguette and marquise-shaped diamonds, the centre set with a brilliant-cut diamond weighing 2.27 carats, to an articulated necklace composed of chevron linking, length approximately 445mm.

£ 5,000-7,000 € 5,800-8,100 US\$ 7,200-10,100

350

Ruby and diamond ring

Claw-set with an oval ruby, within a surround of brilliant-cut diamonds, size K.

Accompanied by a gemmological report.

£ 5,000-7,000 € 5,800-8,100 US\$ 7,200-10,100

351

Pair of diamond ear clips

Each of pendent design, set with pear- and marquise-shaped diamonds.

£ 4,200-7,000 € 4,850-8,100 US\$ 6,100-10,100



352

352

Diamond demi-parure, 1960s

Comprising: a brooch, of abstract foliate and ribbon scroll design, set with brilliant-cut, marquise-shaped and baguette diamonds; and a pair of earrings, *clip and post fittings, fitted case*.

£ 5,600-8,400 € 6,500-9,700 US\$ 8,100-12,100



353

353

Emerald and diamond ring

Claw-set with a rectangular step-cut emerald, framed by brilliant-cut diamonds, *size M^{1/2}*.

Accompanied by a gemmological report.

£ 5,000-7,000 € 5,800-8,100 US\$ 7,200-10,100



354

354

Diamond ring

Claw-set with a cushion-shaped diamond weighing 6.84 carats, to shoulders collet-set with baguette diamonds, *size P^{1/2}*.

Accompanied by a gemmological report.

† £ 40,000-50,000 € 46,000-57,500 US\$ 57,500-72,000



357

355



356

356

PROPERTY OF A LADY

Sapphire and diamond ring, Moro

Set with a brilliant-cut diamond weighing 5.50 carats, framed by oval sapphires, to further brilliant-cut diamonds, size N^{1/2}, signed Moro, Italian assay and maker's marks.

£ 11,000-14,000 € 12,700-16,100 US\$ 15,800-20,100

357

FROM A PRIVATE COLLECTION

Cultured pearl and diamond brooch

Designed as a flower, centring a baroque cultured pearl, to petals pavé-set with brilliant- and circular-cut diamonds, suspending a pear-shaped diamond, the stem decorated with baguette diamonds.

£ 6,000-7,000 € 6,900-8,100 US\$ 8,600-10,100

355

PROPERTY OF A LADY

Ruby and diamond necklace

Of floral design, set with pear-shaped and cabochon rubies and rose diamonds, length approximately 200mm, French assay and maker's marks.

£ 11,000-15,000 € 12,700-17,300 US\$ 15,800-21,500



358

358

PROPERTY OF A LADY

Diamond brooch

Designed as a bouquet, set with pear-, marquise-shaped, square-cut and baguette diamonds, *French assay and partial maker's marks, one small diamond deficient.*

£ 7,000-10,000 € 8,100-11,500 US\$ 10,100-14,400



359

359

Padparadscha and diamond ring, Chaumet, 1940s

Claw-set with a cushion-shaped padparadscha sapphire weighing 13.86 carats, between cushion-shaped diamond shoulders, *size 1 1/2, signed Chaumet, French assay marks.*

Accompanied by SSEF, report no. 43791, stating that the Padparadscha is of Ceylon origin, with no indications of heating, and an additional gemmological report.

£ 7,000-9,000 € 8,100-10,400 US\$ 10,100-12,900



360

360

Fancy blue-grey diamond ring

Set with a heart-shaped fancy blue-grey diamond weighing 13.94 carats, the mount and shoulders accented with brilliant-cut diamonds of pink tint, size O.

Accompanied by GIA report no. 2141888507, stating that the central diamond is Fancy Blue-Grey, Natural Colour.

Please note that the diamonds of pink tint have not been tested for natural colour origin.

Ω £ 200,000-300,000 € 230,000-345,000
US\$ 287,000-430,000





361

361

Diamond brooch, 1950s

Designed as a spray of fern leaves, set with brilliant-cut and baguette diamonds.

£ 6,500-7,500 € 7,500-8,700 US\$ 9,300-10,800



362

362

Ruby and diamond brooch

Designed as a crescent, set with graduated circular-cut rubies and brilliant-cut diamonds.

Accompanied by a gemmological report.

£ 2,600-3,500 € 3,000-4,050 US\$ 3,750-5,100



363

363

Diamond brooch, 1950s

Of scroll design, set with brilliant-cut and tapered baguette and baguette diamonds.

£ 5,000-6,000 € 5,800-6,900 US\$ 7,200-8,600



364

Ruby and diamond parure, 1960s

Comprising: a necklace, composed of articulated foliate scroll links, set with brilliant-cut and marquise-shaped diamonds, supporting a graduated fringe of pear-shaped rubies, *length approximately 370mm, two extra links*; a brooch, set with brilliant-, single-cut, oval, pear and marquise-shaped diamonds and oval rubies; and a bracelet of similar design, *length approximately 185mm*.

£ 8,000-10,000 € 9,200-11,500 US\$ 11,500-14,400

365

Diamond ring

Claw-set with a circular-cut diamond weighing 3.38 carats, *size O*.

£ 8,500-9,500 € 9,800-11,000 US\$ 12,200-13,600

366

Diamond ring

Claw-set with a brilliant-cut diamond weighing 2.62 carats, *size O*.

£ 3,500-6,000 € 4,050-6,900 US\$ 5,100-8,600



367



368



369

367

Pair of diamond ear clips, 1950s

Each surmount of cluster design, set with brilliant-cut and marquise-shaped diamonds, supporting a detachable tassel set with brilliant-cut, marquise-shaped and baguette diamonds.

£ 5,000-7,000 € 5,800-8,100 US\$ 7,200-10,100

368

Ruby and diamond ring

Claw-set with a cabochon ruby, to a pierced scrolled mount set with single-cut and baguette diamond, size J^{1/2}.

£ 6,000-8,500 € 6,900-9,800 US\$ 8,600-12,200

369

Ruby and diamond brooch

Of scroll and wire work design, set with circular-cut and cushion-shaped diamonds, centring a circular-cut and cushion-shaped diamond and oval- and cushion-shaped ruby cluster, suspending a pear-shaped diamond and oval-cut rubies.

Accompanied by a gemmological report.

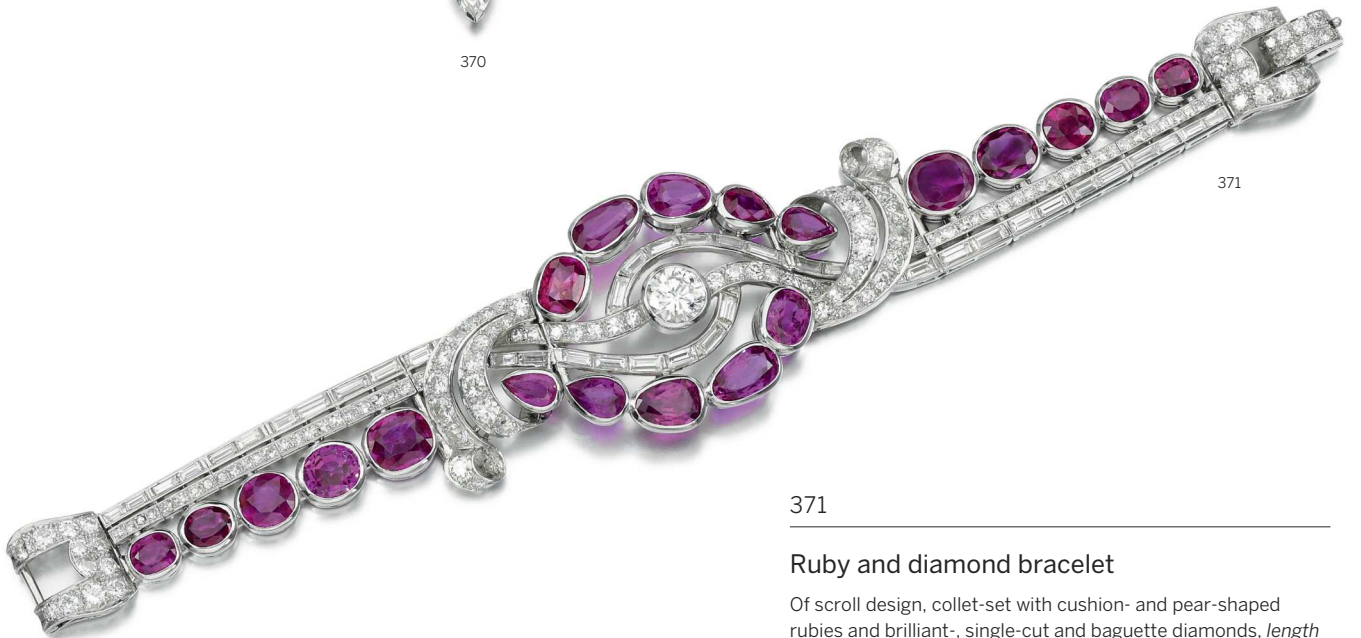
£ 11,000-18,000 € 12,700-20,700 US\$ 15,800-25,800



370



372



371

371

Ruby and diamond bracelet

Of scroll design, collet-set with cushion- and pear-shaped rubies and brilliant-, single-cut and baguette diamonds, *length approximately 185mm.*

Accompanied by a gemmological report.

£ 14,000-18,000 € 16,100-20,700 US\$ 20,100-25,800

370

Diamond brooch, 1950s

Of scroll design, set with brilliant-cut, marquise-shaped and baguette diamonds.

£ 6,500-8,500 € 7,500-9,800 US\$ 9,300-12,200

372

Diamond ring

Claw-set with a brilliant-cut diamond weighing 1.77 carats, within a surround of single-cut diamonds, *size N.*

£ 2,200-3,500 € 2,550-4,050 US\$ 3,150-5,100



373



374

373

Emerald and diamond ring

Claw-set with a cabochon emerald, to a mount set with brilliant-cut and half-moon-shaped diamonds, *size M*.

Accompanied by a gemmological report.

£ 30,000-50,000 € 34,500-57,500 US\$ 43,000-72,000

374

Pair of emerald and diamond ear clips

Each detachable drop-shaped emerald with brilliant-cut diamond cap, suspended from a cluster of brilliant-cut, pear-, and marquise-shaped diamonds, *clip and retractable post fittings*.

Accompanied by a gemmological report.

£ 45,000-65,000 € 52,000-75,000 US\$ 64,500-93,000





375

PROPERTY OF A LADY

Emerald and diamond necklace and pair of earrings, Ravasco, 1920s

The necklace composed of curved links set with circular- and single-cut diamonds, spaced with cabochon and carved emeralds, supporting a pendant of Indo-Persian inspiration similarly set with circular-cut and cushion-shaped diamonds and carved emeralds, *pendant detachable, converting into a brooch, necklace converting into two bracelets, lengths approximately 190mm each; together with a pair of pendent earrings, fitted case.*

£ 22,000-35,000 € 25,300-40,200 US\$ 31,500-50,500





376

377

376

Sapphire and diamond ring, Harry Winston, circa 1959

Claw-set with a cushion-shaped sapphire, to tapered baguette diamond shoulders, *size M*.

Accompanied by a gemmological report and a facsimile of an invoice from Harry Winston dated September 1959.

£ 10,000-15,000 € 11,500-17,300 US\$ 14,400-21,500



378

377

Sapphire and diamond bracelet, Cartier, 1930s

The central tonneau-shaped plaque set with oval, circular-cut and cushion-shaped sapphires and square and baguette diamonds, to a geometric bracelet set with calibr -cut sapphires and single-cut and square diamonds, *length approximately 165mm, signed Cartier, numbered*.

£ 70,000-90,000 € 80,500-104,000 US\$ 101,000-129,000

378

Sapphire and diamond ring, 1930s

Claw-set with a cushion-shaped sapphire, to scrolled shoulders set with baguette sapphires and a single-cut diamond mount, *size l*.

Accompanied by a gemmological report.

£ 10,000-15,000 € 11,500-17,300 US\$ 14,400-21,500





379

Important diamond necklace, Cartier

The front composed of three rows set with square, brilliant-cut and baguette diamonds, the centre supporting a briolette diamond weighing 20.30 carats, to a necklace composed of links set with brilliant-cut diamonds and marquise diamond clasp, length approximately 385mm, signed Cartier, numbered, French assay and maker's marks, fitted case stamped Cartier.

Accompanied by GIA report no. 2145896940, stating that the 20.30 carat diamond is W to X range Colour, SI1 Clarity.

£ 220,000-280,000 € 253,000-322,000
US\$ 315,000-401,000

379

END OF SALE



Sotheby's EST. 1744

Collectors gather here.



PABLO PICASSO
Le peintre et son modèle
Estimate £8,000,000–10,000,000

Impressionist & Modern Art Evening Sale London 19 June

Viewing 14 – 19 June

34–35 NEW BOND STREET, LONDON W1A 2AA
ENQUIRIES +44 20 7293 6342 JAMES.MACKIE@SOTHEBYS.COM
SOTHEBYS.COM/LONDONIMPMODEVE

DOWNLOAD SOTHEBY'S APP
FOLLOW US @SOTHEBYS
#SOTHEBYSIMPMOD



Sotheby's EST. 1744

Collectors gather here.



BALTHASAR VAN DER AST
Flower still life in a glass beaker
on a stone ledge
Estimate £600,000–£800,000

Old Masters Evening Sale
Auction London
4 July 2018

Old Masters from the Van Dedem Collection

Viewing 30 June – 4 July

34–35 NEW BOND STREET, LONDON W1A 2AA

ENQUIRIES +44 (0)20 7293 5414 GEORGE.GORDON@SOTHEBYS.COM
SOTHEBYS.COM/OLDMASTERSEVENING

DOWNLOAD SOTHEBY'S APP
FOLLOW US @SOTHEBYS
#SOTHEBYSMASTERS



Sotheby's EST. 1744

Collectors gather here.

Diamond bangle
'Love', Cartier
Estimate 15,000–20,000

Coral, enamel and diamond brooch
'Coccinelle', Cartier
Estimate 7,000–10,000

**To be sold in London
Fine Jewels
Auction 6 June 2018**



Upcoming Jewellery Auctions 2018

Jewels Online
1 – 15 June

Fine Jewels
London 6 June

Fine Jewels
Geneva 14 June

Jewels Online
6 – 19 July

ENQUIRIES
LONDON +44 (0)20 7293 6409 HONG KONG +852 2822 8112
GENEVA +41 (0)22 908 4849 NEW YORK +1 212 606 7392
SOTHEBYS.COM/JEWELS

DOWNLOAD SOTHEBY'S APP
FOLLOW US @SOTHEBYS
#SOTHEBYSJEWELS





Sotheby's

ABSENTEE/TELEPHONE BIDDING FORM

Sale Number L18051 | **Sale Title** FINE JEWELS | **Sale Date** 6 JUNE 2018

Please see the important information regarding absentee bidding on the reverse of this form.
Forms should be completed in ink and emailed, mailed or faxed to the Bid Department at the details below.

SOTHEBY'S ACCOUNT NUMBER (IF KNOWN)

TITLE	FIRST NAME	LAST NAME
COMPANY NAME		
ADDRESS		
	POSTAL CODE	COUNTRY
DAYTIME PHONE	MOBILE PHONE	FAX
EMAIL		

Please indicate how you would like to receive your invoices: Email Post/Mail

Telephone number during the sale (telephone bids only) _____

Please write clearly and place your bids as early as possible, as in the event of identical bids, the earliest bid received will take precedence. Bids should be submitted in pounds sterling and all bid requests should be submitted at least 24 hrs before the auction. Telephone bids are offered for lots with a minimum low estimate of £3,000.

LOT NUMBER	LOT DESCRIPTION	MAXIMUM STERLING PRICE OR ✓ FOR PHONE BID (EXCLUDING PREMIUM AND TAX)
		£
		£
		£
		£
		£
		£
		£
		£
		£
		£

We will send you a shipping quotation for this and future purchases unless you select one of the check boxes below. Please provide the name and address for shipment of your purchases, if different from above.

NAME AND ADDRESS _____

POSTAL CODE _____ COUNTRY _____

- I will collect in person I authorise you to release my purchased property to my agent/shipper (provide name)
- Send me a shipping quotation for purchases in this sale only

I agree to be bound by Sotheby's "Conditions of Business" and the information set out overleaf in the Guide for Absentee and Telephone Bidders, which is published in the catalogue for the sale. I consent to the use of this information and any other information obtained by Sotheby's in accordance with the Guide for Absentee and Telephone Bidders and Conditions of Business.

SIGNATURE _____

PRINT NAME _____ DATE _____

GUIDE FOR ABSENTEE AND TELEPHONE BIDDERS

If you are unable to attend an auction in person, you may give Sotheby's Bid Department instructions to bid on your behalf by completing the form overleaf. This service is confidential and available at no additional charge.

General

Before the Auction We will try and purchase the lot(s) of your choice for the lowest price possible (dependent on the reserve price and other bids) and never for more than the maximum bid amount you indicate. Where appropriate, your bids will be rounded down to the nearest amount consistent with the auctioneer's bidding increments.

Please place your bids as early as possible, as in the event of identical absentee bids the earliest received will take precedence. Bids should be submitted at least twenty-four hours before the auction.

If bidding by telephone, we suggest that you leave a maximum bid which we can execute on your behalf in the event we are unable to reach you.

Please refer to Condition 5 of the Conditions of Business printed in this catalogue.

After the Auction Successful bidders will receive an invoice detailing their purchases and giving instructions for payment and clearance of goods.

If you are bidding for items marked with a 'W' in the catalogue, we recommend you contact us on the afternoon of the sale to check whether you have been successful. These items will be sent to Sotheby's Greenford Park Fine Art Storage Facility immediately following the sale and therefore buyers are requested to arrange early collection of their goods as they will be subject to handling and storage charges after 30 days.

Without Reserve Lots Where a lot is offered "without reserve" absentee bids will be executed at a minimum of 10% of the low estimate.

Completing This Form

This form should be used for one sale only. Please indicate the sale number, sale title and sale date in the space provided at the top of the form if it is not already pre-populated.

Please record accurately the lot numbers, descriptions and the maximum hammer price you are willing to pay for each lot. Instructions to "BUY" or unlimited bids will not be accepted.

Bids must be numbered in the same order as the lots appear in the catalogue.

Alternate bids for items can be made by placing the word "OR" between lot numbers. This means if your bid on an early lot is successful, we will not continue to bid on subsequent lots for you. Or, if your early bids are unsuccessful, we will continue to execute bids for the remaining lots listed on your absentee bidding form.

If you are arranging a telephone bid, please clearly specify the telephone number on which you can be reached at the time of the sale, including the country code. We will call you from the saleroom shortly before the relevant lot is offered.

New Clients

If you have opened a new account with Sotheby's since 1 December 2002, and have not already provided appropriate identification, you will be asked to present documentation confirming your identity before your property or sale proceeds can be released to you. We may also contact you to request a bank reference.

Please provide government issued photographic identification such as a passport, identity card or driver's licence and confirm your permanent address.

Conditions of Absentee & Telephone Bidding

Please note that the execution of absentee and telephone bids is offered as an additional service for no extra charge. Such bids are executed at the bidder's risk and undertaken subject to Sotheby's other commitments at the time of the auction. Sotheby's therefore cannot accept liability for any reasonable error or failure to place such bids.

All bids are subject to the Conditions of Business applicable to the sale printed in the sale catalogue. Buyer's premium in the amount stated in paragraph 2 of Buying at Auction in the back of the sale catalogue will be added to the hammer price as part of the total purchase price, plus any applicable taxes and charges.

Bids will be executed for the lowest price as is permitted by other bids or reserves.

Where appropriate your written bids will be rounded down to the nearest amount consistent with the auctioneer's bidding increments.

Payment

In the event that you are successful, payment is due immediately after the sale unless otherwise agreed in advance. Payment may be made by bank transfer, credit and debit card (subject to certain restrictions and/or surcharges), cheque or cash (up to US\$10,000 equivalent). You will be sent full details on how to pay with your invoice.

Data Protection

From time to time, Sotheby's may ask clients to provide personal information about themselves or obtain information about clients from third parties (e.g. credit information). If you provide Sotheby's with information that is defined by law as "sensitive", you agree that Sotheby's Companies may use it: in connection with the management and operation of our business and the marketing and supply of Sotheby's Companies' services, or as required by law. Sotheby's Companies will not use or process sensitive information for any other purpose without your express consent. If you would like further information on Sotheby's policies on personal data, to opt out of receiving marketing material, or to make corrections to your information please contact us on +44 (0)20 7293 6667.

In order to fulfil the services clients have requested, Sotheby's may disclose information to third parties (e.g. shippers). Some countries do not offer equivalent legal protection of personal information to that offered within the EU. It is Sotheby's policy to require that any such third parties respect the privacy and confidentiality of our clients' information and provide the same level of protection for clients' information as provided within the EU, whether or not they are located in a country that offers equivalent legal protection of personal information. By signing this Absentee and Telephone Bidding Form you agree to such disclosure. Please note that for security purposes Sotheby's premises are subject to video recording. Telephone calls e.g. telephone bidding/voicemail messages may also be recorded.

BUYING AT AUCTION

The following pages are designed to give you useful information on how to buy at auction. Sotheby's staff as listed at the front of this catalogue will be happy to assist you. However, it is important that you read the following information carefully and note that Sotheby's act for the seller. Bidders' attention is specifically drawn to Conditions 3 and 4, which require them to investigate lots prior to bidding and which contain specific limitations and exclusions of the legal liability of Sotheby's and sellers. The limitations and exclusions relating to Sotheby's are consistent with its role as auctioneer of large quantities of goods of a wide variety and bidders should pay particular attention to these Conditions. Prospective bidders should also consult www.sothebys.com for the most up to date cataloguing of the property in this catalogue.

Buyer's Premium A buyer's premium will be added to the hammer price and is payable by the buyer as part of the total purchase price. The buyer's premium is 25% of the hammer price up to and including £180,000; 20% on any amount in excess of £180,000 up to and including £2,000,000; and 12.9% on any remaining amount in excess of £2,000,000. These rates are exclusive of any applicable VAT.

1. BEFORE THE AUCTION

Catalogue Subscriptions If you would like to take out a catalogue subscription, please ring +44 (0)20 7293 5000.

Pre-sale Estimates Pre-sale estimates are intended as a guide for prospective buyers. Any bid between the high and low pre-sale estimates would, in our opinion, offer a chance of success. However, lots can realise prices above or below the pre-sale estimates.

It is advisable to consult us nearer the time of sale as estimates can be subject to revision. The estimates printed in the auction catalogue do not include the buyer's premium or VAT.

Pre-sale Estimates in US Dollars and Euros Although the sale is conducted in pounds sterling, the pre-sale estimates in some catalogues are also printed in US dollars and/or euros. The rate of exchange is the rate at the time of production of this catalogue. Therefore, you should treat the estimates in US dollars or euros as a guide only.

Condition of Lots Prospective buyers are encouraged to inspect the property at the pre-sale exhibitions. Solely as a convenience, Sotheby's may also provide condition reports. The absence of reference to the condition of a lot in the catalogue description does not imply that the lot is free from faults or imperfections. Please refer to Condition 3 of the Conditions of Business for Buyers printed in this catalogue.

Electrical and Mechanical Goods All electrical and mechanical goods are sold on the basis of their artistic and decorative value only, and should not be assumed to be operative. It is essential that prior to any intended use, the electrical system

is checked and approved by a qualified electrician.

Provenance In certain circumstances, Sotheby's may print in the catalogue the history of ownership of a work of art if such information contributes to scholarship or is otherwise well known and assists in distinguishing the work of art. However, the identity of the seller or previous owners may not be disclosed for a variety of reasons. For example, such information may be excluded to accommodate a seller's request for confidentiality or because the identity of prior owners is unknown given the age of the work of art.

2. DURING THE AUCTION

Conditions of Business The auction is governed by the Conditions of Business and Authenticity Guarantee. These apply to all aspects of the relationship between Sotheby's and actual and prospective bidders and buyers. Anyone considering bidding in the auction should read them carefully. They may be amended by way of notices posted in the saleroom or by way of announcement made by the auctioneer.

Bidding at Auction Bids may be executed in person by paddle during the auction, in writing prior to the sale, by telephone or by BIDnow.

Auction speeds vary, but average between 50 and 120 lots per hour. The bidding steps are generally in increments of approximately 10% of the previous bid.

Please refer to Conditions 5 and 6 of the Conditions of Business for Buyers printed in this catalogue.

Bidding in Person To bid in person, you will need to register for and collect a numbered paddle before the auction begins. Proof of identity will be required. If you have a Sotheby's Client Card, it will facilitate the registration process.

Should you be the successful buyer of a lot, please ensure that your paddle can be seen by the auctioneer and that it is your number that is called out. Should there be any doubts as to price or buyer, please draw the auctioneer's attention to it immediately.

All lots sold will be invoiced to the name and address in which the paddle has been registered and cannot be transferred to other names and addresses.

Please do not mislay your paddle; in the event of loss, inform the Sales Clerk immediately. At the end of the sale, please return your paddle to the registration desk.

Absentee, Telephone and Internet Bids If you cannot attend the auction, we will be happy to execute written bids on your behalf or you can bid on the telephone for lots with a minimum low estimate of £3,000 or you can bid online using BIDnow. A bidding form and more information can be found at the back of this catalogue.

Online Bidding via BIDnow If you cannot attend the auction, it may be possible to bid online via BIDnow for selected sales. This service is free and confidential. For information about registering to bid

via BIDnow, please refer to sothebys.com. Bidders using the BIDnow service are subject to the Additional Terms and Conditions for Live Online Bidding via BIDnow, which can be viewed at sothebys.com, as well as the Conditions of Business applicable to the sale.

Consecutive and Responsive Bidding

The auctioneer may open the bidding on any lot by placing a bid on behalf of the seller. The auctioneer may further bid on behalf of the seller, up to the amount of the reserve, by placing consecutive or responsive bids for a lot. Please refer to Condition 6 of the Conditions of Business for Buyers printed in this catalogue.

Interested Parties Announcement In situations where a person who is allowed to bid on a lot has a direct or indirect interest in such lot, such as the beneficiary or executor of an estate selling the lot, a joint owner of the lot, or a party providing or participating in a guarantee of the lot, Sotheby's will make an announcement in the saleroom that interested parties may bid on the lot. In certain instances, interested parties may have knowledge of the reserves.

Employee Bidding Sotheby's employees may bid only if the employee does not know the reserve and fully complies with Sotheby's internal rules governing employee bidding.

US Economic Sanctions The United States maintains economic and trade sanctions against targeted foreign countries, groups and organisations. There may be restrictions on the import into the United States of certain items originating in sanctioned countries, including Burma, Cuba, Iran, North Korea and Sudan. The purchaser's inability to import any item into the US or any other country as a result of these or other restrictions shall not justify cancellation or rescission of the sale or any delay in payment. Please check with the specialist department if you are uncertain as to whether a lot is subject to these import restrictions, or any other restrictions on importation or exportation.

3. AFTER THE AUCTION

Payment Payment is due immediately after the sale and may be made by Sterling Wire Transfer or Sterling Cheque. Payments by Sterling Cash and by Credit/Debit Cards are also accepted subject to certain restrictions and/or surcharges – please see below.

- It is against Sotheby's general policy to accept single or multiple related payments in the form of cash or cash equivalents in excess of the local currency equivalent of US\$10,000.
- It is Sotheby's policy to request any new clients or buyers preferring to make a cash payment to provide: proof of identity (by providing some form of government issued identification containing a photograph, such as a passport, identity card or driver's licence) and confirmation of permanent address. Thank you for your co-operation.

Cheques should be made payable to Sotheby's. Although personal and company cheques drawn in pounds

sterling on UK banks are accepted, you are advised that property will not be released until such cheques have cleared unless you have a pre-arranged Cheque Acceptance Facility. Forms to facilitate this are available from the Post Sale Services Department.

Bank transfers Our bank account details are shown on our invoices. Please include your name, Sotheby's account number and invoice number with your instructions to your bank. Please note that we reserve the right to decline payments received from anyone other than the buyer of record and that clearance of such payments will be required. Please contact our Post Sale Services Department if you have any questions concerning clearance.

Card payment Sotheby's accepts payment by Visa, MasterCard, American Express and CUP credit and debit cards. Card payments may not exceed £30,000 per sale. All cards are accepted in person at Sotheby's premises at the address noted in the catalogue. With the exception of CUP, card payments may also be made online at <http://www.sothebys.com/en/invoice-payment.html> or by calling Post Sale Services at +44 (0)20 7293 5220.

We reserve the right to seek identification of the source of funds received.

The Conditions of Business require buyers to pay immediately for their purchases. However, in limited circumstances and with the seller's agreement, Sotheby's may grant buyers it deems creditworthy the option of paying for their purchases on an extended payment term basis. Generally credit terms must be arranged prior to the sale. In advance of determining whether to grant the extended payment terms, Sotheby's may require credit references and proof of identity and residence.

Collection It is Sotheby's policy to request proof of identity on collection of a lot. Lots will be released to you or your authorised representative when full and cleared payment has been received by Sotheby's. If you are in doubt about the location of your purchases, please contact the Sale Administrator prior to arranging collection. Removal, storage and handling charges may be levied on uncollected lots. Please refer to Condition 7 of the Conditions of Business for Buyers printed in this catalogue.

Storage Storage and handling charges may apply. For information concerning post sale storage and charges, please see Sotheby's Greenford Park, Storage and Collection Information at the back of this catalogue. Please refer to Condition 7 of the Conditions of Business for Buyers printed in this catalogue.

All purchases remaining at our New Bond Street premises 90 days after the sale will be transferred to Sotheby's Greenford Park Fine Art Storage (see Sotheby's Greenford Park, Storage and Collection information). All such purchases will be subject to further storage and handling charges from this point.

Loss or Damage Buyers are reminded that Sotheby's accepts liability for loss

or damage to lots for a maximum period of thirty (30) days after the date of the auction. Please refer to Condition 7 of the Conditions of Business for Buyers printed in this catalogue.

Shipping Sotheby's offers a comprehensive shipping service. Except if otherwise indicated in this Buying At Auction Guide, our Shipping Department can advise buyers on exporting and shipping property, and arranging delivery.

For assistance please contact:
Post Sale Services (Mon-Fri 9am to 5pm)
Tel +44 (0)20 7293 5220
Fax +44 (0)20 7293 5910
Email: ukpostsaleservices@sothebys.com

We will send you a quotation for shipping your purchase(s). Transit risk insurance may also be included in your quotation. If the quotation is accepted, we will arrange the shipping for you and will despatch the property as soon as possible after receiving your written agreement to the terms of the quotation, financial release of the property and receipt of any export licence or certificates that may be required. Despatch will be arranged at the buyer's expense. Sotheby's may charge an administrative fee for arranging the despatch.

All shipments should be unpacked and checked on delivery and any discrepancies notified immediately to the party identified in your quotation and/or the accompanying documentation.

Export The export of any lot from the UK or import into any other country may be subject to one or more export or import licences being granted. It is the buyer's responsibility to obtain any relevant export or import licence. The denial of any licence required or delay in obtaining such licence cannot justify the cancellation of the sale or any delay in making payment of the total amount due.

Sotheby's, upon request and for an administrative fee, may apply for a licence to export your lot(s) outside the UK

- An **EU Licence** is necessary to export cultural goods subject to the EU Regulation on the export of cultural property (EEC No. 3911/92, Official Journal No. L395 of 31/12/92) from the European Community.
- A **UK Licence** is necessary to move cultural goods valued at or above the relevant UK Licence limits from the UK.

For export outside the European Community, an EU Licence will be required for most items over 50 years of age with a value of over £41,018. The following is a selection of categories of items for which other value limits apply and for which an EU Licence may be required. It is not exhaustive and there are other restrictions.

EU Licence Thresholds

Archaeological objects
EU LICENCE THRESHOLD: ZERO
Elements of artistic, historical or religious monuments
EU LICENCE THRESHOLD: ZERO
Manuscripts, documents and archives (excluding printed matter)

EU LICENCE THRESHOLD: ZERO
Architectural, scientific and engineering drawings produced by hand
EU LICENCE THRESHOLD: £12,305
Photographic positive or negative or any assemblage of such photographs
EU LICENCE THRESHOLD: £12,305
Textiles (excluding carpets and tapestries)
EU LICENCE THRESHOLD: £41,018
Paintings in oil or tempera
EU LICENCE THRESHOLD: £123,055
Watercolours, gouaches and pastels
EU LICENCE THRESHOLD: £24,611
Prints, Engravings, Drawings and Mosaics
EU LICENCE THRESHOLD: £12,305

There are separate thresholds for exporting within the European Community. A UK Licence will be required for most items over 50 years of age with a value of over £65,000. Some exceptions are listed below:-

UK Licence Thresholds

Photographic positive or negative or any assemblage of such photographs
UK LICENCE THRESHOLD: £10,000
Textiles (excluding carpets and tapestries)
UK LICENCE THRESHOLD: £12,000
British Historical Portraits
UK LICENCE THRESHOLD: £10,000

Sotheby's recommends that you retain all import and export papers, including licences, as in certain countries you may be required to produce them to governmental authorities.

Endangered Species Items made of or incorporating plant or animal material, such as coral, crocodile, ivory, whalebone, tortoiseshell, etc., irrespective of age or value, may require a licence or certificate prior to exportation and require additional licences or certificates upon importation to any country outside the EU. Please note that the ability to obtain an export licence or certificate does not ensure the ability to obtain an import licence or certificate in another country, and vice versa. For example, it is illegal to import African elephant ivory into the United States and there are other restrictions on the importation of ivory into the US under certain US regulations which are designed to protect wildlife conservation. Sotheby's suggests that buyers check with their own government regarding wildlife import requirements prior to placing a bid. It is the buyer's responsibility to obtain any export or import licences and/or certificates as well as any other required documentation (please refer to Condition 10 of the Conditions of Business for Buyers printed in this catalogue). Please note that Sotheby's is not able to assist buyers with the shipment of any lots containing ivory and/or other restricted materials into the US. A buyer's inability to export or import these lots cannot justify a delay in payment or a sale's cancellation.

EXPLANATION OF SYMBOLS

The following key explains the symbols you may see inside this catalogue.

◊ Guaranteed Property

The seller of lots with this symbol has been guaranteed a minimum price from one auction or a series of auctions. This guarantee may be provided by Sotheby's

or jointly by Sotheby's and a third party. Sotheby's and any third parties providing a guarantee jointly with Sotheby's benefit financially if a guaranteed lot is sold successfully and may incur a loss if the sale is not successful. If the Guaranteed Property symbol for a lot is not included in the printing of the auction catalogue, a pre-sale or pre-lot announcement will be made indicating that there is a guarantee on the lot. If every lot in a catalogue is guaranteed, the Important Notices in the sale catalogue will so state and this symbol will not be used for each lot.

▲ Property in which Sotheby's has an Ownership Interest

Lots with this symbol indicate that Sotheby's owns the lot in whole or in part or has an economic interest in the lot equivalent to an ownership interest.

➤ Irrevocable Bids

Lots with this symbol indicate that a party has provided Sotheby's with an irrevocable bid on the lot that will be executed during the sale at a value that ensures that the lot will sell. The irrevocable bidder, who may bid in excess of the irrevocable bid, may be compensated for providing the irrevocable bid by receiving a contingent fee, a fixed fee or both. If the irrevocable bidder is the successful bidder, any contingent fee, fixed fee or both (as applicable) for providing the irrevocable bid may be netted against the irrevocable bidder's obligation to pay the full purchase price for the lot and the purchase price reported for the lot shall be net of any such fees. If the irrevocable bid is not secured until after the printing of the auction catalogue, Sotheby's will notify bidders that there is an irrevocable bid on the lot by one or more of the following means: a pre-sale or pre-lot announcement, by written notice at the auction or by including an irrevocable bid symbol in the e-catalogue for the sale prior to the auction. From time to time, Sotheby's or any affiliated company may provide the irrevocable bidder with financing related to the irrevocable bid. If the irrevocable bidder is advising anyone with respect to the lot, Sotheby's requires the irrevocable bidder to disclose his or her financial interest in the lot. If an agent is advising you or bidding on your behalf with respect to a lot identified as being subject to an irrevocable bid, you should request that the agent disclose whether or not he or she has a financial interest in the lot.

∨ Interested Parties

Lots with this symbol indicate that parties with a direct or indirect interest in the lot may be bidding on the lot, including (i) the beneficiary of an estate selling the lot, or (ii) the joint owner of a lot. If the interested party is the successful bidder, they will be required to pay the full Buyer's Premium. In certain instances, interested parties may have knowledge of the reserve. In the event the interested party's possible participation in the sale is not known until after the printing of the auction catalogue, a pre-lot announcement will be made indicating that interested parties may be bidding on the lot.

□ No Reserve

Unless indicated by a box (□), all lots

in this catalogue are offered subject to a reserve. A reserve is the confidential hammer price established between Sotheby's and the seller and below which a lot will not be sold. The reserve is generally set at a percentage of the low estimate and will not exceed the low estimate for the lot. If any lots in the catalogue are offered without a reserve, these lots are indicated by a box (□). If all lots in the catalogue are offered without a reserve, a Special Notice will be included to this effect and the box symbol will not be used for each lot.

⊕ Property Subject to the Artist's Resale Right

Purchase of lots marked with this symbol (⊕) will be subject to payment of the Artist's Resale Right, at a percentage of the hammer price calculated as follows:

Portion of the hammer price (in €)

Royalty Rate	
From 0 to 50,000	4%
From 50,000.01 to 200,000	3%
From 200,000.01 to 350,000	1%
From 350,000.01 to 500,000	0.5%
Exceeding 500,000	0.25%

The Artist's Resale Right payable will be the aggregate of the amounts payable under the above rate bands, subject to a maximum royalty payable of 12,500 euros for any single work each time it is sold. The maximum royalty payable of 12,500 euros applies to works sold for 2 million euros and above. Calculation of the artist's resale right will be based on the pound sterling / Euro reference exchange rate quoted on the date of the sale by the European Central Bank.

◉ Restricted Materials

Lots with this symbol have been identified at the time of cataloguing as containing organic material which may be subject to restrictions regarding import or export. The information is made available for the convenience of Buyers and the absence of the Symbol is not a warranty that there are no restrictions regarding import or export of the Lot; Bidders should refer to Condition 10 of the Conditions of Business for Buyers. Please also refer to the section on Endangered Species in the Buying at Auction Guide. As indicated in the Endangered Species section, Sotheby's is not able to assist buyers with the shipment of any lots with this symbol into the US.

A buyer's inability to export or import any lots with this symbol cannot justify a delay in payment or a sale's cancellation.

▮ Monumental

Lots with this symbol may, in our opinion, require special handling or shipping services due to size or other physical considerations. Buyers are advised to inspect the lot and to contact Sotheby's prior to the sale to discuss any specific shipping requirements.

Please refer to VAT information for Buyers for VAT symbols used in this catalogue. Value Added Tax (VAT) may be payable on the hammer price and/or the buyer's premium. Buyer's premium may attract a charge in lieu of VAT. Please read carefully the "VAT INFORMATION FOR BUYERS" printed in this catalogue.

VAT AND OTHER TAX INFORMATION FOR BUYERS

The following paragraphs are intended to give general guidance to buyers on the VAT and certain other potential tax implications of purchasing property at Sotheby's. The information concerns the most usual circumstances and is not intended to be complete. In all cases the relevant tax legislation takes precedence and the VAT rates in effect on the day of the auction will be the rates charged except for lots sold subject to Temporary Admission for which the applicable rate will be that in force at the time of collection. It should be noted that, for VAT purposes only, Sotheby's is not usually treated as an agent and most property is sold as if it is the property of Sotheby's.

In the following paragraphs, reference to VAT symbols shall mean those symbols located beside the lot number or the pre-sale estimates in the catalogue (or amending sale room notice).

1. PROPERTY WITH NO VAT SYMBOL

Where there is no VAT symbol, Sotheby's is able to use the Auctioneer's Margin Scheme and VAT will not normally be charged on the hammer price.

Sotheby's must bear VAT on the buyer's premium and hence will charge an amount in lieu of VAT at the standard rate on this premium. This amount will form part of the buyer's premium on our invoice and will not be separately identified. A limited range of goods, including most books, are not liable to VAT and therefore no amount in lieu of VAT will be added to the premium.

Please see 'Exports from the European Union' for the conditions to be fulfilled before the amount in lieu of VAT on the buyer's premium may be cancelled or refunded.

(VAT-registered buyers from within the European Union (EU) should note that the amount in lieu of VAT contained within the buyer's premium cannot be cancelled or refunded by Sotheby's or HM Revenue and Customs.)

Buyers requiring an invoice under the normal VAT rules, instead of a margin scheme invoice, should notify the Post Sale Service Group or the Client Accounts Department on the day of the auction and an invoice with VAT on the hammer price will be raised. Buyers requiring invoicing under the normal VAT rules subsequent to a margin scheme invoice having been raised should contact the Client Accounts Department for assistance.

2. PROPERTY WITH A † SYMBOL

These items will be sold under the normal UK VAT rules and VAT will be charged at the standard rate on both the hammer price and buyer's premium.

Please see 'Exports from the European Union' for the conditions to be fulfilled before the VAT charged on the hammer price may be cancelled or refunded.

(VAT-registered buyers from other EU countries may have the VAT cancelled or refunded if they provide Sotheby's

with their VAT registration number and evidence that the property has been removed from the UK within three months of the date of sale. The evidence of removal required is a certificate of shipment or, if the lots were carried by hand, proof of travel and completion of a form available from the Post Sale Service Group.

3. PROPERTY WITH A □ SYMBOL

Items sold to buyers whose address is in the EU will be assumed to be remaining in the EU. The property will be invoiced as if it had no VAT symbol (see 'Property with no VAT symbol' above). However, if the property is to be exported from the EU, Sotheby's will re-invoice the property under the normal VAT rules (see 'Property sold with a † symbol' above) as requested by the seller.

Items sold to buyers whose address is outside the EU will be assumed to be exported from the EU. The property will be invoiced under the normal VAT rules (see 'Property sold with a † symbol' above). Although the hammer price will be subject to VAT this will be cancelled or refunded upon export - see 'Exports from the European Union'. However, buyers who are not intending to export their property from the EU should notify our Client Accounts Department on the day of the sale and the property will be re-invoiced showing no VAT on the hammer price (see 'Property sold with no VAT symbol' above).

4. PROPERTY SOLD WITH A ‡ OR Ω SYMBOL

These items have been imported from outside the EU to be sold at auction under Temporary Admission. When Sotheby's releases such property to buyers in the UK, the buyer will become the importer and must pay Sotheby's import VAT at the following rates on the hammer price:

- ‡ - the reduced rate
- Ω - the standard rate

You should also note that the appropriate rate will be that in force on the date of collection of the property from Sotheby's and not that in force at the date of the sale.

These lots will be invoiced under the margin scheme. Sotheby's must bear VAT on the buyer's premium and hence will charge an amount in lieu of VAT at the standard rate on this premium. This amount will form part of the buyer's premium on our invoice and will not be separately identified.

(VAT-registered buyers from the EU should note that the import VAT charged on property released in the UK cannot be cancelled or refunded by Sotheby's, however you may be able to seek repayment) by applying to HM Revenue and Customs - see 'VAT Refunds from HM Revenue and Customs')

(VAT-registered buyers from the UK should note that the invoice issued by Sotheby's for these items is not suitable evidence in respect of import VAT.)

On request, immediately after sale, the Temporary Admission Department can either ask HM Revenue and Customs to

generate a C79 certificate (for UK buyers), or obtain a copy of the import C88 (for other EU VAT registered buyers), which may be used to claim recovery of the VAT. Otherwise Sotheby's may re-invoice the lot as if it had been sold with a † symbol and charge VAT at the standard rate on both the hammer price and premium and provide a tax invoice to the buyer. This may enable a buyer who is VAT registered elsewhere in the EU to avoid payment of VAT in the United Kingdom. Re-invoicing in this way may make the lot ineligible to be re-sold using the margin scheme.

Sotheby's will transfer all lots sold subject to Temporary Admission to its Customs warehouse immediately after sale.

5. EXPORTS FROM THE EUROPEAN UNION

The following amounts of VAT may be cancelled or refunded provided Sotheby's receive the appropriate export documents within the time limits stated:

Property with no VAT symbol (see paragraph 1)

The amount in lieu of VAT charged on Buyer's Premium may be refunded provided the purchaser resides outside of the United Kingdom and the property is exported from the EU within 3 months of the sale. Sotheby's must be provided with the appropriate proof of export immediately after export of the goods.

Property with a † symbol

The VAT charged upon the hammer price may be refunded provided the purchaser resides outside of the United Kingdom and the property is exported from the EU within 3 months of the sale. Sotheby's must be provided with the appropriate proof of export immediately after export of the goods.

Property with a ‡ or Ω symbol

The Temporary Admission VAT charged on the hammer price may be refunded under the following circumstances:-

- Sotheby's is instructed to ship the property to a place outside the EU
- The property is hand carried from the UK directly outside the EU and Sotheby's pre lodge the export entry with HMRC
- The VAT liability is transferred to your shipper's own Temporary Admission or Customs Warehouse arrangement prior to collection from Sotheby's

Under all other circumstances Sotheby's is required to complete the importation and pay the VAT due to HM Revenue and Customs prior to the property leaving its premises and so a VAT refund will not be possible.

Proof of export required

- for lots sold under the margin scheme (no VAT symbol) or the normal VAT rules († symbol), Sotheby's is provided with appropriate documentary proof of export from the EU. Buyers carrying their own property should obtain hand-carry papers from the Shipping department to facilitate this process.
- for lots sold under Temporary Admission (‡ or Ω symbols), and subsequently transferred to Sotheby's

Customs Warehouse (into Bond). The property must be shipped as described above in the paragraph headed Property with a ‡ or Ω symbol.

- buyers carrying their own property must obtain hand-carry papers from the Shipping Department for which a small administrative charge will be made. The VAT refund will be processed once the appropriate paperwork has been returned to Sotheby's.

- Sotheby's is not able to cancel or refund any VAT charged on sales made to UK or EU private residents unless the lot is subject to Temporary Admission and the property is exported from the EU and the requisite export papers provided to Sotheby's within one month of collection of the property.

- Sotheby's is not able to cancel or refund any VAT charged on sales to UK or EU private residents unless the lot is subject to Temporary Admission and is shipped as described above.

Buyers intending to export, repair, restore or alter lots sold under Temporary Admission (‡ or Ω symbols) and therefore transferred to Customs Warehouse after sale should notify the Shipping Department before collection. Failure to do so may result in the import VAT becoming payable immediately and Sotheby's being unable to refund the VAT charged on deposit.

6. VAT REFUNDS FROM HM REVENUE AND CUSTOMS

Where VAT charged cannot be cancelled or refunded by Sotheby's, it may be possible to seek repayment from HM Revenue and Customs. Repayments in this manner are limited to businesses located outside the UK.

Claim forms are available from:

HM Revenue and Customs
VAT Overseas Payments Unit
PO Box 34, Foyle House
Duncreggan Road, Londonderry
Northern Ireland, BT48 7AE
Tel: +44 (0)2871 305100
Fax: +44 (0)2871 305101
enq.oru.ni@hmrc.gsi.gov.uk

7. SALES AND USE TAXES

Buyers from outside the UK should note that local sales taxes or use taxes may become payable upon import of items following purchase (for example, the Use Tax payable on import of purchased items to certain states of the USA). Buyers should obtain their own advice in this regard.

Sotheby's is registered to collect sales tax in the states of New York and California, USA. In the event that Sotheby's ships items for a purchaser in this sale to a destination within New York State USA, or California State USA, Sotheby's is obliged to collect the respective state's sales or use tax on the total purchase price and shipping costs, including insurance, of such items, regardless of the country in which the purchaser resides or is a citizen. Where the purchaser has provided Sotheby's with a valid Resale Exemption Certificate prior to the release of the property, sales

and use tax will not be charged. Clients to whom this tax might apply are advised to contact the Post Sale Manager listed in the front of this catalogue before arranging shipping.

CONDITIONS OF BUSINESS FOR BUYERS

The nature of the relationship between Sotheby's, Sellers and Bidders and the terms on which Sotheby's (as auctioneer) and Sellers contract with Bidders are set out below.

Bidders' attention is specifically drawn to Conditions 3 and 4 below, which require them to investigate lots prior to bidding and which contain specific limitations and exclusions of the legal liability of Sotheby's and Sellers. The limitations and exclusions relating to Sotheby's are consistent with its role as auctioneer of large quantities of goods of a wide variety and Bidders should pay particular attention to these Conditions.

1. INTRODUCTION

(a) Sotheby's and Sellers' contractual relationship with prospective Buyers is governed by:

- (i) these Conditions of Business;
- (ii) the Conditions of Business for Sellers displayed in the saleroom and which are available upon request from Sotheby's UK salerooms or by telephoning +44 (0)20 7293 6482;
- (iii) Sotheby's Authenticity Guarantee as printed in the sale catalogue;
- (iv) any additional notices and terms printed in the sale catalogue, including the guide to Buying at Auction; and
- (v) in respect of online bidding via the internet, the BidNOW Conditions on the Sotheby's website.

in each case as amended by any saleroom notice or auctioneer's announcement at the auction.

(b) As auctioneer, Sotheby's acts as agent for the Seller. A sale contract is made directly between the Seller and the Buyer. However, Sotheby's may own a lot (and in such circumstances acts in a principal capacity as Seller) and/or may have a legal, beneficial or financial interest in a lot as a secured creditor or otherwise.

2. COMMON TERMS

In these Conditions of Business:

"Bidder" is any person considering, making or attempting to make a bid, by whatever means, and includes Buyers;

"Buyer" is the person who makes the highest bid or offer accepted by the auctioneer, and includes such person's principal when bidding as agent;

"Buyer's Expenses" are any costs or expenses due to Sotheby's from the Buyer and any Artist's Resale Right levy payable in respect of the sale of the Property, including an amount in respect of any applicable VAT thereon;

"Buyer's Premium" is the commission payable by the Buyer on the Hammer

Price at the rates set out in the guide to Buying at Auction plus any applicable VAT or an amount in lieu of VAT;

"Counterfeit" is as defined in Sotheby's Authenticity Guarantee;

"Hammer Price" is the highest bid accepted by the auctioneer by the fall of the hammer, (in the case of wine, as apportioned pro-rata by reference to the number of separately identified items in that lot), or in the case of a post-auction sale, the agreed sale price;

"Purchase Price" is the Hammer Price and applicable Buyer's Premium and VAT;

"Reserve" is the (confidential) minimum Hammer Price at which the Seller has agreed to sell a lot;

"Seller" is the person offering a lot for sale (including their agent (other than Sotheby's), executors or personal representatives);

"Sotheby's" means Sotheby's, the unlimited company which has its registered office at 34-35 New Bond Street, London W1A 2AA;

"Sotheby's Company" means both Sotheby's in the USA and any of its subsidiaries (including Sotheby's in London) and Sotheby's Diamonds SA and its subsidiaries (in each case "subsidiary" having the meaning of Section 1159 of the Companies Act 2006);

"VAT" is Value Added Tax at the prevailing rate. Further information is contained in the guide to Buying at Auction.

3. DUTIES OF BIDDERS AND OF SOTHEBY'S IN RESPECT OF ITEMS FOR SALE

(a) Sotheby's knowledge in relation to each lot is partially dependent on information provided to it by the Seller, and Sotheby's is not able to and does not carry out exhaustive due diligence on each lot. Bidders acknowledge this fact and accept responsibility for carrying out inspections and investigations to satisfy themselves as to the lots in which they may be interested.

(b) Each lot offered for sale at Sotheby's is available for inspection by Bidders prior to the sale. Sotheby's accepts bids on lots solely on the basis that Bidders (and independent experts on their behalf, to the extent appropriate given the nature and value of the lot and the Bidder's own expertise) have fully inspected the lot prior to bidding and have satisfied themselves as to both the condition of the lot and the accuracy of its description.

(c) Bidders acknowledge that many lots are of an age and type which means that they are not in perfect condition. All lots are offered for sale in the condition they are in at the time of the auction (whether or not Bidders are in attendance at the auction). Condition reports may be available to assist when inspecting lots. Catalogue descriptions and condition reports may on occasions make reference to particular imperfections of a lot, but Bidders should note that lots may have other faults not expressly referred to in the catalogue or condition report. Illustrations are for identification purposes only and will not convey full information as to

the actual condition of lots.

(d) Information provided to Bidders in respect of any lot, including any estimate, whether written or oral and including information in any catalogue, condition or other report, commentary or valuation, is not a representation of fact but rather is a statement of opinion genuinely held by Sotheby's. Any estimate may not be relied on as a prediction of the selling price or value of the lot and may be revised from time to time in Sotheby's absolute discretion.

(e) No representations or warranties are made by Sotheby's or the Seller as to whether any lot is subject to copyright or whether the Buyer acquires copyright in any lot.

(f) Subject to the matters referred to at 3(a) to 3(e) above and to the specific exclusions contained at Condition 4 below, Sotheby's shall exercise such reasonable care when making express statements in catalogue descriptions or condition reports as is consistent with its role as auctioneer of lots in the sale to which these Conditions relate, and in the light of:

- (i) the information provided to it by the Seller;
- (ii) scholarship and technical knowledge; and
- (iii) the generally accepted opinions of relevant experts, in each case at the time any such express statement is made.

4. EXCLUSIONS AND LIMITATIONS OF LIABILITY TO BUYERS

(a) Sotheby's shall refund the Purchase Price to the Buyer in circumstances where it deems that the lot is a Counterfeit and each of the conditions of the Authenticity Guarantee has been satisfied.

(b) In the light of the matters in Condition 3 above and subject to Conditions 4(a) and 4(e), neither any Sotheby's Company nor the Seller:

(i) is liable for any errors or omissions in information provided to Bidders by Sotheby's (or any Sotheby's Company), whether orally or in writing, whether negligent or otherwise, except as set out in Condition 3(f) above;

(ii) gives any guarantee or warranty to Bidders and any implied warranties and conditions are excluded (save in so far as such obligations cannot be excluded by law) other than the express warranties given by the Seller to the Buyer in Condition 2 of the Sellers' Conditions of Business;

(iii) accepts responsibility to any Bidders in respect of acts or omissions (whether negligent or otherwise) by Sotheby's in connection with the conduct of auctions or for any matter relating to the sale of any lot.

(c) Unless Sotheby's owns a lot offered for sale, it is not responsible for any breach of these conditions by the Seller.

(d) Without prejudice to Condition 4(b), any claim against Sotheby's or the Seller by a Bidder is limited to the Purchase Price with regard to that lot. Neither Sotheby's nor the Seller shall under any

circumstances be liable for any consequential losses.

(e) None of this Condition 4 shall exclude or limit Sotheby's liability in respect of any fraudulent misrepresentation made by Sotheby's or the Seller, or in respect of death or personal injury caused by the negligent acts or omissions of Sotheby's or the Seller.

5. BIDDING AT AUCTION

(a) Sotheby's has absolute discretion to refuse admission to the auction. Bidders must complete a Paddle Registration Form and supply such information and references as required by Sotheby's. Bidders act as principal unless they have Sotheby's prior written consent to bid as agent for another party. Bidders are personally liable for their bid and are jointly and severally liable with their principal if bidding as agent.

(b) Sotheby's advises Bidders to attend the auction but will seek to carry out absentee written bids which are in pounds sterling and, in Sotheby's opinion, clear and received sufficiently in advance of the sale of the lot, endeavouring to ensure that the first received of identical written bids has priority.

(c) Where available, written, telephone and online bids are offered as an additional service for no extra charge, at the Bidder's risk and shall be undertaken with reasonable care subject to Sotheby's other commitments at the time of the auction; Sotheby's therefore cannot accept liability for failure to place such bids save where such failure is unreasonable. Telephone and online bids may be recorded. Online bids ("BidNOW") are made subject to the BidNOW Conditions available on the Sotheby's website or upon request. The BidNOW Conditions apply in relation to online bids, in addition to these Conditions of Business.

6. CONDUCT OF THE AUCTION

(a) Unless otherwise specified, all lots are offered subject to a Reserve, which shall be no higher than the low presale estimate at the time of the auction.

(b) The auctioneer has discretion at any time to refuse any bid, withdraw any lot, re-offer a lot for sale (including after the fall of the hammer) if he believes there may be error or dispute, and take such other action as he reasonably thinks fit.

(c) The auctioneer will commence and advance the bidding at levels and in increments he considers appropriate and is entitled to place a bid or series of bids on behalf of the Seller up to the Reserve on the lot, without indicating he is doing so and whether or not other bids are placed.

(d) Subject to Condition 6(b), the contract between the Buyer and the Seller is concluded on the striking of the auctioneer's hammer, whereupon the Buyer becomes liable to pay the Purchase Price.

(e) Any post-auction sale of lots offered at auction shall incorporate these Conditions as if sold in the auction.

7. PAYMENT AND COLLECTION

(a) Unless otherwise agreed, payment of the Purchase Price for a lot and any Buyer's Expenses are due by the Buyer in pounds sterling immediately on conclusion of the auction (the "Due Date") notwithstanding any requirements for export, import or other permits for such lot.

(b) Title in a purchased lot will not pass until Sotheby's has received the Purchase Price and Buyer's Expenses for that lot in cleared funds. Sotheby's is not obliged to release a lot to the Buyer until title in the lot has passed and appropriate identification has been provided, and any earlier release does not affect the passing of title or the Buyer's unconditional obligation to pay the Purchase Price and Buyer's Expenses.

(c) The Buyer is obliged to arrange collection of purchased lots no later than thirty (30) calendar days after the date of the auction. Purchased lots are at the Buyer's risk (and therefore their sole responsibility for insurance) from the earliest of i) collection or ii) the thirty-first calendar day after the auction. Until risk passes, Sotheby's will compensate the Buyer for any loss or damage to the lot up to a maximum of the Purchase Price paid. Buyers should note that Sotheby's assumption of liability for loss or damage is subject to the exclusions set out in Condition 6 of the Conditions of Business for Sellers.

(d) For all items stored by a third party and not available for collection from Sotheby's premises, the supply of authority to release to the Buyer shall constitute collection by the Buyer.

(e) All packing and handling is at the Buyer's risk. Sotheby's will not be liable for any acts or omissions of third party packers or shippers.

(f) The Buyer of any firearm is solely responsible for obtaining all valid firearm or shotgun certificates or certificates of registration as a firearms dealer, as may be required by the regulations in force in England and Wales or Scotland (as applicable) relating to firearms or other weapons at the time of the sale, and for complying with all such regulations, whether or not notice of such is published in the Sale Catalogue. Sotheby's will not deliver a firearm to a Buyer unless the Buyer has first supplied evidence to Sotheby's satisfaction of compliance with this Condition.

8. REMEDIES FOR NON-PAYMENT

Without prejudice to any rights the Seller may have, if the Buyer without prior agreement fails to make payment for the lot within five days of the auction, Sotheby's may in its sole discretion (having informed the Seller) exercise one or more of the following remedies:

(a) store the lot at its premises or elsewhere at the Buyer's sole risk and expense;

(b) cancel the sale of the lot;

(c) set off any amounts owed to the Buyer by a Sotheby's Company against any amounts owed to Sotheby's by the Buyer in respect of the lot;

(d) apply any payments made to Sotheby's by the buyer as part of the Purchase Price and Buyer's Expenses towards that or any other lot purchased by the Buyer, or to any shortfall on the resale of any lot pursuant to paragraph (h) below, or to any damages suffered by Sotheby's as a result of breach of contract by the Buyer;

(e) reject future bids from the Buyer or render such bids subject to payment of a deposit;

(f) charge interest at 6% per annum above HSBC Bank plc Base Rate from the Due Date to the date the Purchase Price and relevant Buyer's Expenses are received in cleared funds (both before and after judgement);

(g) exercise a lien over any of the Buyer's property which is in the possession of a Sotheby's Company. Sotheby's shall inform the Buyer of the exercise of any such lien and within 14 days of such notice may arrange the sale of such property and apply the proceeds to the amount owed to Sotheby's;

(h) resell the lot by auction or private sale, with estimates and reserves at Sotheby's discretion. In the event such resale is for less than the Purchase Price and Buyer's Expenses for that lot, the Buyer will remain liable for the shortfall together with all costs incurred in such resale;

(i) commence legal proceedings to recover the Purchase Price and Buyer's Expenses for that lot, together with interest and the costs of such proceedings on a full indemnity basis; or

(j) release the name and address of the Buyer to the Seller to enable the Seller to commence legal proceedings to recover the amounts due and legal costs. Sotheby's will take reasonable steps to notify the Buyer prior to releasing such details to the Seller.

9. FAILURE TO COLLECT PURCHASES

(a) If the Buyer pays the Purchase Price and Buyer's Expenses but fails to collect a purchased lot within thirty calendar days of the auction, the lot will be stored at the Buyer's expense (and risk) at Sotheby's or with a third party.

(b) If a purchased lot is paid for but not collected within six months of the auction, the Buyer authorises Sotheby's, having given notice to the Buyer, to arrange a resale of the item by auction or private sale, with estimates and reserves at Sotheby's discretion. The proceeds of such sale, less all costs incurred by Sotheby's, will be forfeited unless collected by the Buyer within two years of the original auction.

10. EXPORT AND PERMITS

It is the Buyer's sole responsibility to identify and obtain any necessary export, import, firearm, endangered species or other permit for the lot. Any symbols or notices in the sale catalogue reflect Sotheby's reasonable opinion at the time of cataloguing and offer Bidders general guidance only. Without prejudice to Conditions 3 and 4 above, Sotheby's and the Seller make no representations or warranties as to whether any lot is or is not subject to export or import restrictions or any embargoes. The denial of any permit

or licence shall not justify cancellation or rescission of the sale contract or any delay in payment.

11. GENERAL

(a) All images and other materials produced for the auction are the copyright of Sotheby's, for use at Sotheby's discretion.

(b) Notices to Sotheby's should be in writing and addressed to the department in charge of the sale, quoting the reference number specified at the beginning of the sale catalogue. Notices to Sotheby's clients shall be addressed to the last address formally notified by them to Sotheby's.

(c) Should any provision of these Conditions of Business be held unenforceable for any reason, the remaining provisions shall remain in full force and effect.

(d) These Conditions of Business are not assignable by any Buyer without Sotheby's prior written consent, but are binding on Buyers' successors, assigns and representatives. No act, omission or delay by Sotheby's shall be deemed a waiver or release of any of its rights.

(e) The Contracts (Rights of Third Parties) Act 1999 is excluded by these Conditions of Business and shall not apply to any contract made pursuant to them.

(f) The materials listed in Condition 1(a) above set out the entire agreement and understanding between the parties with respect to the subject matter hereof. It is agreed that, save in respect of liability for fraudulent misrepresentation, no party has entered into any contract pursuant to these terms in reliance on any representation, warranty or undertaking which is not expressly referred to in such materials.

12. DATA PROTECTION

Sotheby's will use information provided by its clients (or which Sotheby's otherwise obtains relating to its clients) for the provision of auction and other art-related services, loan and insurance services, client administration, marketing and otherwise to manage and operate its business, or as required by law. This will include information such as the client's name and contact details, proof of identity, financial information, records of the client's transactions, and preferences. Some gathering of information about Sotheby's clients will take place using technical means to identify their preferences in order to provide a higher quality of service to them. Sotheby's may also disclose the client information to other Sotheby's Companies and/or third parties acting on their behalf to provide services for the purposes listed above.

Sometimes, Sotheby's may also disclose this information to carefully selected third parties for their own marketing purposes. If you do not wish your details to be used for this purpose, please email enquiries@sothebys.com.

If the client provides Sotheby's with information that is defined by European data protection laws as "sensitive", the client agrees that it may be used for the purposes set out above.

In the course of these disclosures, personal data collected in the European Eco-

nomic Area may be disclosed to countries outside the European Economic Area. Although such countries may not have legislation that protects a client's personal information, Sotheby's shall take reasonable steps to keep such information secure and in accordance with European data protection principles. By agreeing to these Conditions of Business, the client is agreeing to such disclosure.

Please be aware that Sotheby's may film auctions or other activities on Sotheby's premises and that such recordings may be transmitted over the Internet via Sotheby's website. Telephone bids may be recorded.

Under European data protection laws, a client may object, by request and free of charge, to the processing of their information for certain purposes, including direct marketing, and may access and rectify personal data relating to them and may obtain more information about Sotheby's data protection policies by writing to Sotheby's, 34-35 New Bond Street, London W1A 2AA, or 1334 York Avenue, New York, NY 10021, Attn: Compliance or emailing enquiries@sothebys.com.

13. LAW AND JURISDICTION

Governing Law These Conditions of Business and all aspects of all matters, transactions or disputes to which they relate or apply (including any online bids in the sale to which these Conditions apply) shall be governed by and interpreted in accordance with English law.

Jurisdiction For the benefit of Sotheby's, all Bidders and Sellers agree that the Courts of England are to have exclusive jurisdiction to settle all disputes arising in connection with all aspects of all matters or transactions to which these Conditions of Business relate or apply. All parties agree that Sotheby's shall retain the right to bring proceedings in any court other than the Courts of England.

Service of Process All Bidders and Sellers irrevocably consent to service of process or any other documents in connection with proceedings in any court by facsimile transmission, personal service, delivery by mail or in any other manner permitted by English law, the law of the place of service or the law of the jurisdiction where proceedings are instituted, at the last address of the Buyer or Seller known to Sotheby's or any other usual address.

SOTHEBY'S GREENFORD PARK STORAGE AND COLLECTION INFORMATION

Smaller items can normally be collected from New Bond Street, however large items may be sent to Sotheby's Greenford Park Fine Art Storage Facility. If you are in doubt about the location of your purchases please contact the Sale Administrator (see front of catalogue) prior to collection.

COLLECTION FROM NEW BOND STREET

Lots will be released to you or your authorised representative when full and cleared payment has been received by Sotheby's, together with settlement

of any removal, interest, handling and storage charges thereon, appropriate identification has been provided and a release note has been produced by our Post Sale Service Group at New Bond Street, who are open Monday to Friday 9.00am to 5.00pm.

Any purchased lots that have not been collected within 30 days from the date of the auction will be subject to handling and storage charges at the rates set out below. In addition all purchased lots that have not been collected from our New Bond Street premises within 90 days of the auction will be transferred to Sotheby's Greenford Park Fine Art Storage Facility.

Collect your property from:

Sotheby's Property Collection

Opening hours:

Monday to Friday 9.00am to 5.00pm

34–35 New Bond Street

London, W1A 2AA

Tel: +44 (0)20 7293 5358

Fax: +44 (0)20 7293 5933

COLLECTION FROM SOTHEBY'S GREENFORD PARK FINE ART STORAGE FACILITY

Lots will be released to you or your authorised representative when full and cleared payment has been received by Sotheby's, together with settlement of any removal, interest, handling and storage charges thereon, appropriate identification has been provided and a release note has been produced by our Post Sale Service Group at New Bond Street, who are open Monday to Friday 9.00am to 5.00pm.

Purchasers must ensure that their payment has been cleared prior to collection and that a release note has been forwarded to Sotheby's Greenford Park by our Post Sale Service Group at Sotheby's New Bond Street. Buyers who have established credit arrangements with Sotheby's may collect purchases prior to payment, although a release note is still required from our Post Sale Service Group as above.

Any purchased lots that have not been collected within 30 days from the date of the auction will be subject to handling and storage charges at the rates set out below.

Collect your property from: **Sotheby's Greenford Park Fine Art Storage Facility**

Opening hours:

Monday to Friday 8.30am to 4.30pm

Sotheby's Greenford Park,

13 Ockham Drive, Greenford, Middlesex, UB6 0FD

Tel: +44 (0)20 7293 5600

Fax: +44 (0)20 7293 5625

ROUTE GUIDANCE TO SOTHEBY'S GREENFORD PARK FINE ART STORAGE FACILITY

From Bond Street head towards Regents Park, take the A40 Marylebone Road to Western Avenue. Take the exit off the A40 signposted Greenford A4127. At the roundabout take the third exit signposted

Harrow and Sudbury, A4127 onto Greenford Road. Go under the railway bridge and at the traffic lights turn first left into Rockware Avenue. At the T Junction turn right onto Oldfield Lane North and then left into Ockham Drive. Stop at the security barrier and say you are visiting Sotheby's. Once cleared, travel 300 yards down the road and Unit 13 is situated on the left hand side.

STORAGE CHARGES

Any purchased lots that have not been collected within 30 days from the date of the auction will be subject to handling and storage charges at the following rates:

Small items (such as jewellery, watches, books or ceramics): handling fee of £20 per lot plus storage charges of £2 per lot per day.

Medium items (such as most paintings or small items of furniture): handling fee of £30 per lot plus storage charges of £4 per lot per day.

Large items (items that cannot be lifted or moved by one person alone): handling fee of £40 per lot plus storage charges of £8 per lot per day.

Oversized items (such as monumental sculptures): handling fee of £80 per lot plus storage charges of £10 per lot per day.

A lot's size will be determined by Sotheby's on a case by case basis (typical examples given above are for illustration purposes only).

All charges are subject to VAT, where applicable. All charges are payable to Sotheby's at our Post Sale Service Group in New Bond Street.

Storage charges will cease for purchased lots which are shipped through Sotheby's Shipping Logistics from the date on which we have received a signed quote acceptance from you.

LIABILITY FOR LOSS OR DAMAGE

Buyers are reminded that Sotheby's accepts liability for loss or damage to lots for a maximum period of thirty (30) calendar days after the date of the auction. Please refer to Condition 7 of the Conditions of Business for Buyers.

SOTHEBY'S AUTHENTICITY GUARANTEE FOR JEWELLERY

If Sotheby's sells any gemstone or pearls which the Buyer subsequently shows to Sotheby's reasonable satisfaction not to be genuine or of natural origin, subject to the terms below Sotheby's will set aside the sale and refund to the Buyer the total amount paid by the Buyer to Sotheby's for such gemstones or pearls, in the currency of the original sale.

This Guarantee is provided for a period of twenty one (21) days after the date of the relevant auction, is solely for the benefit of the Buyer and may not be transferred to any third party. To be able to claim under this Guarantee, the Buyer must:-

(i) notify Sotheby's in writing within such 21 day period of the reasons for not believing the gemstones or pearls to be

genuine or of natural origin, specifying the lot number, date of the auction at which it was purchased; and
(ii) return the item to Sotheby's in the same condition as at the date of sale to the Buyer and be able to transfer good title in the item, free from any third party claims arising after the date of the sale.

Sotheby's has discretion to waive any of the above requirements. Sotheby's may require the Buyer to obtain at the Buyer's cost the reports of two independent and recognised experts in the field, mutually acceptable to Sotheby's and the Buyer. Sotheby's shall not be bound by any reports produced by the Buyer, and reserves the right to seek additional expert advice at its own expense. In the event Sotheby's decides to rescind the sale under this Guarantee, it may refund to the Buyer the reasonable costs of up to two mutually approved independent expert reports.

4/08 NBS_GUARANTEE_JEWELS

IMPORTANT NOTICES

ESTIMATES IN US DOLLARS AND EUROS

As a guide to potential buyers, estimates for this sale are also shown in US Dollars and Euros. The estimates printed in the catalogue in Pounds Sterling have been converted at the following rate, which was current at the time of printing. These estimates may have been rounded:

£1 = US\$1.43

£1 = €1.14

By the date of the sale this rate is likely to have changed, and buyers are recommended to check before bidding.

During the sale Sotheby's may provide a screen to show currency conversions as bidding progresses. This is intended for guidance only and all bidding will be in Pounds Sterling. Sotheby's is not responsible for any error or omissions in the operation of the currency converter.

Payment for purchases is due in Pounds Sterling, however the equivalent amount in any other currency will be accepted at the rate prevailing on the day that payment is received in cleared funds.

Settlement is made to vendors in the currency in which the sale is conducted, or in another currency on request at the rate prevailing on the day that payment is made by Sotheby's. Photographs do not show pieces to scale.

LIABILITY FOR LOSS OR DAMAGE FOR PURCHASED LOTS

Purchasers are requested to arrange clearance as soon as possible and are reminded that Sotheby's accepts liability for loss or damage to lots for a maximum period of thirty (30) calendar days following the date of the auction. Please refer to condition 7 of the Conditions of Business for Buyers.

SAFETY AT SOTHEBY'S

Sotheby's is concerned for your safety while you are on our premises and we endeavour to display items safely so far as is reasonably practicable. Nevertheless, should you handle any items on view at our premises, you do so at your own risk.

Some items can be large and/or heavy and can be dangerous if mishandled. Should you wish to view or inspect any items more closely please ask for assistance from a member of Sotheby's staff to ensure your safety and the safety of the property on view.

Some items on view may be labelled "PLEASE DO NOT TOUCH". Should you wish to view these items you must ask for assistance from a member of Sotheby's staff who will be pleased to assist you. Thank you for your co-operation.

AUTHENTICITY GUARANTEE

All lots are offered subject to the Sotheby's Authenticity Guarantee and Conditions of Business for Buyers, which are set forth in this catalogue and Conditions of Business for Sellers, which are available from Sotheby's offices on request. Prospective bidders should review the Conditions of Business, Authenticity Guarantee and the Buying at Auction section in the printed catalogue.

VAT INFORMATION

For all lots marked with a †, ‡, α or Ω please refer to the VAT Information pages at the back of the catalogue.

TREATMENT & CONDITION OF GEMSTONES

Traditionally, gemstones have been treated by a variety of techniques to enhance colour and generally to improve their appearance. Typically, rubies and sapphires have been heat treated and emeralds have been treated by oil or resin to improve colour and clarity. These or other techniques, such as dyeing, irradiation, coating and impregnation, may be used on other gemstones.

Although it is widely believed that heat treatments are permanent, purchasers should assume that any treatment may not be permanent and that over time special care of the stone may be required. Prospective purchasers are reminded that, unless the catalogue description specifically states that a stone is natural, we have assumed that some form of treatment may have been used and that such treatment may not be permanent. Our presale estimates reflect this assumption.

To the extent that Sotheby's has laboratory reports containing specific information on the treatment of a stone, these reports are made available for review by potential purchasers. Available reports from internationally recognised gemmological laboratories will be noted in the description of the item. New forms of treatments and new scientific methods to discern them are constantly being developed. Consequently, there may be a lack of consensus among laboratories as to whether gemstones have been treated, the extent of the treatment or the permanence of the treatment.

References in the catalogue descriptions to certificates or reports issued by gemmological laboratories are included only for the information of bidders, and Sotheby's accepts no responsibility for the accuracy, terms or information contained in such certificates or reports.

Statements in the catalogue regarding the condition of lots in this sale usually appear in the description. However, the absence of any such reference does not imply that a lot is in perfect condition or completely free from wear or imperfections. Sotheby's will be pleased to offer condition reports on all lots of the sale to potential purchasers. Please call the jewellery representatives as set forth in the front of the catalogue.

CERTIFICATES OF AUTHENTICITY

Various manufacturers may not issue certificates of authenticity upon request. Except as specifically noted in the catalogue, Sotheby's will not be required to furnish the purchaser with a certificate of authenticity from the manufacturer at any time. Unless the requirements for a rescission of the sale under the Terms of Guarantee are satisfied, the failure of a manufacturer to issue a certificate will not constitute grounds to rescind the sale.

WRISTWATCHES

All wristwatches are sold as viewed and cannot be returned on the grounds that repairs have been carried out or parts supplied by anyone other than the named makers. There will be no viewing of watches and wristwatches on the day of sale.

Watches may not be taken apart whilst on view. Prospective buyers or their agents wishing to do so should make an appointment with the Watch Department for a private view the week before the sale. Although condition reports may be given on request, such reports are statements of opinion only and may not specify all mechanical replacements or imperfections in the movement, case and dial. All dimensions are approximate.

Watches in water-resistant cases have been opened to examine movements but no warranties are made that the watches are currently water-resistant.

Please note that we do not guarantee the authenticity of any individual component parts, such as wheels, hands, crowns, crystals, screws, bracelets and leather bands, since subsequent repairs and restoration work may have resulted in the replacement of original parts.

Please be advised that straps made of material derived from endangered or otherwise protected species (ie. alligator and crocodile) are not sold with the watches and are for display purposes only. We reserve the right to remove these straps prior to shipping.

Furthermore, in reference to watch bands, we do not guarantee the material of manufacture. Please be advised that the purchaser will be responsible for complying with any applicable export and import matters, particularly in relation to endangered species and the United States Department of Fish and Wildlife Services.

We make no representation or warranty as to the condition of any lot sold.

R Important Notice regarding Importation into the United States of Rolex Watches
Sotheby's cannot arrange for the delivery of Rolex watches to the United States because U.S. laws restricts the import of Rolex watches. The buyer or a designated agent may collect the property in the country of sale.

GLOSSARY OF TERMS

As a convenience to our clients, we include the following glossary which includes definitions of certain terms used in this catalogue. Please read carefully the terms of the Authenticity Guarantee and the Conditions of Business for Buyers set out in this catalogue, in particular Conditions 3 and 4.

SIGNATURES

CAPITALISED HEADING

When the maker's name appears in the CAPITALISED HEADING in the catalogue description, in Sotheby's qualified opinion, the piece is by the named jeweller.

NAME OF JEWELLER

When we state the name of a maker in the catalogue description below the CAPITALISED HEADING, we mean that, in Sotheby's qualified opinion, although unsigned, the piece is by the named jeweller.

MOUNTED BY

When we state in the catalogue description below the CAPITALISED HEADING "Mounted by _____", we mean that, in Sotheby's qualified opinion, only the mount is by the jeweller, and the gemstones were not supplied by the jeweller or the piece has been altered in some way after its manufacture.

DIAMOND CLARITY

Clarity grading follows a hierarchy describing the extent of the impurities in a diamond. All clarity grading is carried out under a 10x magnification. The more impurities in a diamond the lower the price per carat.

IF (INTERNALLY FLAWLESS)

No inclusions and only insignificant blemishes

VVS1 AND VVS2 (VERY VERY SLIGHT INCLUSION)

Extremely difficult to see, visible only from the back of the stone, or small and shallow enough to be removed easily by repolishing

VS1 AND VS2 (MINOR INCLUSIONS)

Still difficult to see with the untrained eye

S11 AND S12 (NOTICEABLE INCLUSIONS)

Easy (S11) or very easy (S12) to see with a 10x lens. When these have been located with a 10x lens, look at the stone with the naked eye and the inclusions can sometimes be spotted

I1, I2, I3 (OBVIOUS INCLUSIONS)

May be eye-visible face-up without the aid of a lens. In I3, they may threaten the stone's durability

RING SIZES

Metric	French/Japanese	English	USA
37.8252	—	A	1/2
38.4237	—	A 1/2	3/4
39.0222	—	B	1
39.6207	—	B 1/2	1 1/4
40.2192	—	C	1 1/2
40.8177	—	C 1/2	1 3/4
41.4162	1	D	2°
42.0147	2	D 1/2	2 1/4
42.6132	—	E	2 1/2
43.2117	3	E 1/2	2 3/4
43.8102	4	F	3
44.4087	—	F 1/2	3 1/4
45.0072	5	G	3 1/2
45.6057	—	G 1/2	3 3/4
46.2042	6	H	4
46.8027	—	H 1/2	4 1/4
47.4012	7	I	4 1/2
47.9997	8	I 1/2	4 3/4
48.5982	—	J	5
49.1967	9	J 1/2	5 1/4
49.7952	10	K	5 1/2
50.3937	—	K 1/2	5 3/4
50.9922	11	L	6
51.5907	—	L 1/2	6 1/4
52.1892	12	M	6 1/2
52.7877	13	M 1/2	6 3/4
53.4862	—	N	7
54.0847	14	N 1/2	7 1/4
54.6832	15	O	7 1/2
55.2817	—	O 1/2	7 3/4
55.8802	16	P	8
56.4787	—	P 1/2	8 1/4
57.0772	17	Q	8 1/2
57.6757	18	Q 1/2	8 3/4
58.2742	—	R	9
58.8727	19	R 1/2	9 1/4
59.4712	20	S	9 1/2
60.0697	—	S 1/2	9 3/4
60.6682	21	T	10
61.2667	22	T 1/2	10 1/4
61.8652	—	U	10 1/2
62.4637	23	U 1/2	10 3/4
63.0622	24	V	11
63.6607	—	V 1/2	11 1/4
64.2592	25	W	11 1/2
64.8577	—	W 1/2	11 3/4
65.4562	26	X	12
66.0547	—	X 1/2	12 1/4
66.6532	27	Y	12 1/2
67.2517	—	Y 1/2	12 3/4
67.8502	28	Z	13

COLOUR GRADING

Colour grading follows a scale describing the "whiteness" or absence of secondary colour in a white diamond. At the top of the scale a diamond will appear white, and at the bottom yellowish or brownish.

GIA - D, E, F

The top colour grades, D, E, F, describe a diamond which appears colourless against a white background.

GIA - G, H, I

In near colourless diamonds, G, H, I, there is a slight trace of colour which will not be apparent to the untrained eye. Stones 0.50ct or less will look colourless.

GIA - J, K, L

Diamonds graded J, K, L, will have noticeable traces of colour. Small stones in this range will 'face up' colourless when mounted but larger stones will be tinted.

GIA - M - Z

Diamonds graded M-Z will display a yellowish tint even to the untrained eye.

FANCY COLOURS

GIA Z+

Z+ colour grade indicates that the diamond is of fancy colour and therefore fall into a different price bracket.

4/15 NBS_GLOS_JEWELS

INTERNATIONAL DEPARTMENTS

For a full listing of our offices and salerooms worldwide with detailed information on all of Sotheby's services, visit sothebys.com

David Bennett
Chairman
International Jewellery Division

Daniela Mascetti
Senior Director, Deputy Chairman,
Europe

Gary Schuler
Chairman, North and South America

Brett O'Connor
Senior Specialist, International

Patti Wong
Chairman, Sotheby's Diamonds

Chin Yeow Quek
Chairman, Asia

Laurence Nicolas
Global Managing Director,
Jewellery, Watches and
Sotheby's Diamond

Maria Kelly
Deputy Managing Director,
Luxury and Lifestyle Division

Andres White Correal
Director of International
Business Development

Rebecca Spencer
Business Director, Europe

Jessica Whitman
Business Director, London

Yang Bu
Business Director, North America

Scott Roworth
Business Director, Asia

EUROPE

Geneva

David Bennett
Daniela Mascetti
Brett O'Connor
Olivier Wagner
Prince Abdul Aziz Toussoun
Associate, Europe
+41 22 908 4849

London

Kristian Spofforth
Justin Roberts
Andres White Correal
Benoit Repellin
Nikita Manilal
+44 (0)20 7293 6409

Milan

Sara Miconi
+39 02 295 00201
Daniela Mascetti
+41 22 908 4849

Paris

Gabriella Mantegani
Claire de Truchis-Lauriston
+33 1 5305 5337

Amsterdam

Albertine Verlinde
+31 20 550 2204

Brussels

Marianna Lora
+32 2 627 7198

Lugano

Iris Fabbri
+41 91 993 3060

Madrid

Andres White Correal
+34 91 576 5714

Monaco

Douglas Walker
+377 93 30 8880

Munich

Heinrich Graf von Spreti
+49 89 291 31 51

Rome

Luisa Lepri
+39 06 699 41791

Tel Aviv

Sigal Mordechai
+972 3 560 1666

Vienna

Andrea Jungmann
+43 1 512 4772

NORTH AMERICA

New York

Gary Schuler
Carol Elkins
Esther Tadjiev
Robin Wright
Catharine Becket
Kendall Reed
Frank Everett
Alexander Eblen
+1 212 606 7392

SOTHEBY'S DIAMONDS
+44 (0)20 7293 6430

West

Carol Elkins
Quig Bruning
+1 415 772 9027

ASIA

Hong Kong

Chin Yeow Quek
Flora Wong
Shanne Ng
Yvonne Chu
Julia Liu
Jessica Wyndham
+852 2822 8115

SOTHEBY'S DIAMONDS

Lisa Chow
Joanne Ma
+852 2822 8113

CHINA

Beijing

Lei Tang
+86 10 6408 8890

Shanghai

Fiona Zhang
+86 21 6288 7500

Indonesia

Jasmine Prasetyo
+62 21 5797 3603

Japan

Aki Uemura
Maiko Ichikawa
+81 3 3230 2755

Malaysia

Walter Cheah ‡
+60 12 208 3917

Philippines

Angela Hsu ‡
+63 917 815 0075

Singapore

Esther Seet
+65 6732 8239

Taiwan

Wendy Lin
Nicolette Chou
+886 2 2757 6689

Thailand

Wannida Saetieo
+66 2 286 0788

Consultant ‡

FORTHCOMING AUCTIONS

A comprehensive calendar of international auctions, in addition to all sale results, can be viewed at sothebys.com

FINE JEWELS

14 June 2018
Geneva

SUMMERTIME JEWELS

5-15 June 2018
London

BOARD OF DIRECTORS

Domenico De Sole
Chairman of the Board

The Duke of Devonshire
Deputy Chairman of the Board

Tad Smith
**President and
 Chief Executive Officer**

Jessica Bibliowicz
 Linus W. L. Cheung
 Kevin Conroy
 Daniel S. Loeb
 Olivier Reza
 Marsha E. Simms
 Diana L. Taylor
 Dennis M. Weibling
 Harry J. Wilson

**SOTHEBY'S
EXECUTIVE MANAGEMENT**

Jill Bright
**Human Resources
 & Administration
 Worldwide**

Amy Cappellazzo
**Chairman
 Fine Art Division**

Valentino D. Carlotti
**Business Development
 Worldwide**

Kevin Ching
**Chief Executive Officer
 Asia**

Adam Chinn
**Chief Operating Officer
 Worldwide**

Lauren Gioia
**Communications
 Worldwide**

David Goodman
**Digital Development
 & Marketing
 Worldwide**

Mike Goss
Chief Financial Officer

Scott Henry
**Technology & Operations
 Worldwide**

Jane Levine
**Chief Compliance Counsel
 Worldwide**

Laurence Nicolas
**Global Managing Director
 Jewelry & Watches**

Jonathan Olsoff
**General Counsel
 Worldwide**

Jan Prasens
**Managing Director
 Europe, Middle East, Russia,
 India and Africa**

Allan Schwartzman
**Chairman
 Fine Art Division**

**SOTHEBY'S INTERNATIONAL
COUNCIL**

Robin Woodhead
**Chairman
 Sotheby's International**

John Marion
Honorary Chairman

Juan Abelló
 Judy Hart Angelo
 Anna Catharina Astrup
 Nicolas Berggruen
 Philippe Bertherat
 Lavinia Borrromeo
 Dr. Alice Y.T. Cheng
 Laura M. Cha
 Halit Cingilloğlu
 Jasper Conran
 Henry Cornell
 Quinten Dreesmann
 Ulla Dreyfus-Best
 Jean Marc Etlin
 Tania Fares
 Comte Serge de Ganay
 Ann Getty
 Yassmin Ghandehari
 Charles de Gunzburg
 Ronnie F. Heyman
 Shalini Hinduja
 Pansy Ho
 Prince Aryn Aga Khan
 Catherine Lagrange
 Edward Lee
 Jean-Claude Marian
 Batia Ofer
 Georg von Opel
 Marchesa Laudomia Pucci Castellano
 David Ross
 Patrizia Memmo Ruspoli
 Rolf Sachs
 René H. Scharf
 Biggi Schuler-Voith
 Judith Taubman
 Olivier Widmaier Picasso
 The Hon. Hilary M. Weston,
 CM, CVO, OOnt

CHAIRMAN'S OFFICE

AMERICAS

Lisa Dennison
 Benjamin Doller
 George Wachter

Thomas Bompard
 Lulu Creel
 August Uribe

EUROPE

Oliver Barker
 Helena Newman
 Mario Tavella
 Dr. Philipp Herzog von Württemberg

David Bennett
 Lord Dalmeny
 Claudia Dwek
 Edward Gibbs
 Caroline Lang
 Lord Poltmore

ASIA

Patti Wong
 Nicolas Chow

Richard C. Buckley
 Quek Chin Yeow

INDEX

Adione 139
Alfred Phillips, attributed to 35
Angela Cummings for Tiffany & Co. 278
Ashley Hicks 298
Asprey 214, 254

Boucheron 110, 251, 289
Buccellati 215, 242
Bucherer 202
Bulgari 114, 239, 253, 257, 267, 269, 273, 274, 339

Cartier 6, 60, 125, 145, 169, 192, 196, 197, 198, 210, 222, 228, 236, 237, 238, 247, 260, 264, 279, 280, 281, 297, 305, 312, 316, 320, 322, 323, 338, 377, 379
Chaumet 313, 359
Collingwood & Co. 256
Courrier, Adolfo 265

David Morris 148
David Webb 76, 79, 80, 81, 100, 117, 120, 121, 122, 123, 127, 291

Frascarolo 68, 74, 75, 78, 82, 83, 84, 87, 88, 89, 90, 91
Fürst 345

Gilbert Albert 240

Harry Winston 376
Hermès 193, 218

Illario 306

Jaeger-LeCoultre 155

Kutchinsky 212

Luigi Rosi 46

Mario Buccellati 259, 319
Masriera 26
monture Boucheron 150
Moro 356
Movado 176
Mrs Newman 13

Omega 230

Pederzani 268
Piaget 255
Pomellato 261

Ravasco 375

Sabbadini 318
Salvador Dalí 300, 301

Tiffany & Co. 181, 213
Trabert & Hoeffler Mauboussin 105

Unoerre 99

Van Cleef & Arpels 98, 118, 119, 194, 195, 200, 216, 233, 234, 235, 246, 263, 286, 293, 302
Vever 188

Weingrill 115, 124, 262
Wendy Ramshaw CBE RDI 294, 296

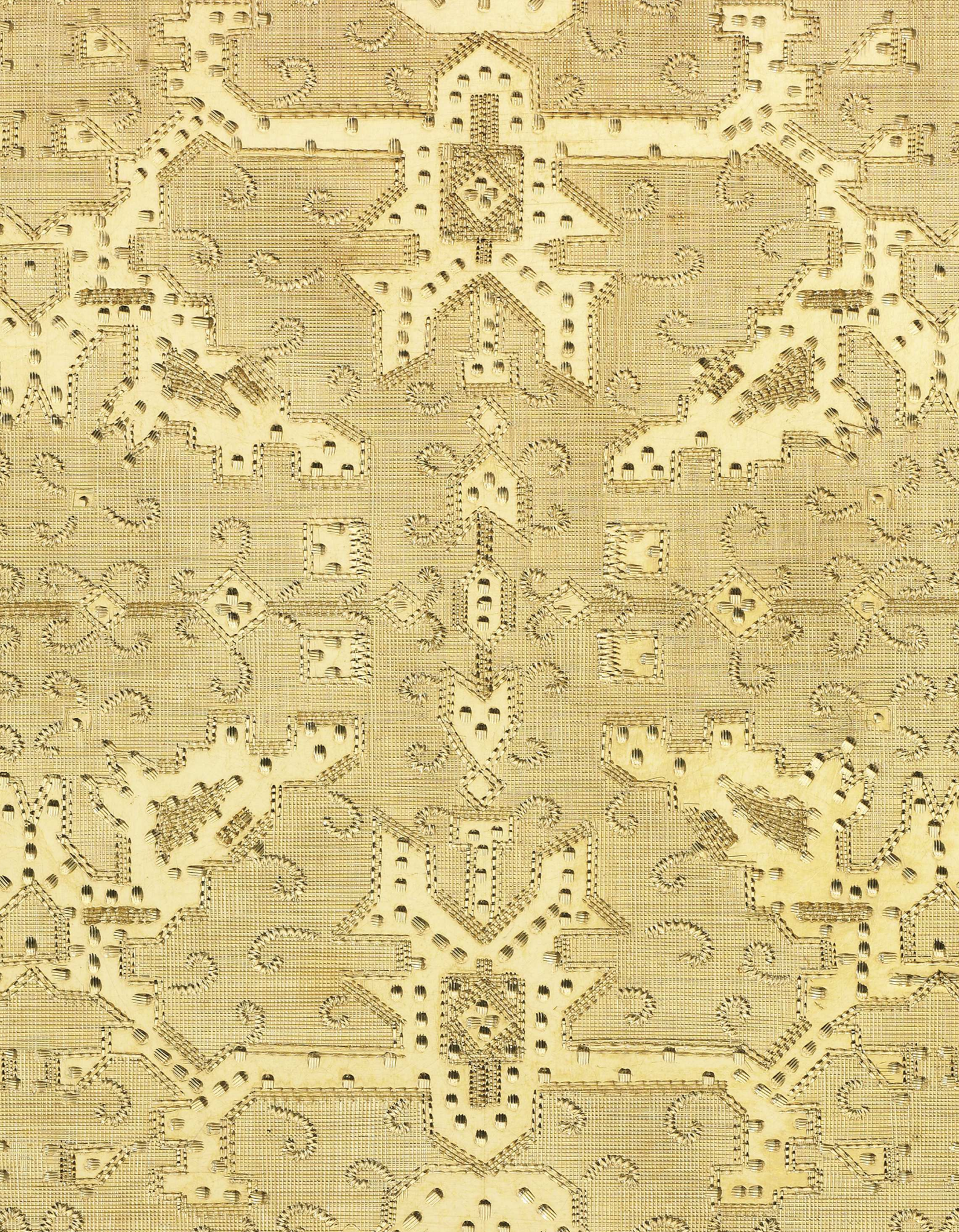


In recognition of the high standards of business administration and our compliance with all required customs protocols and procedures, Sotheby's UK has been awarded the European Union Authorised Economic Operator status by Her Majesty's Revenue and Customs.



Sotheby's UK is committed to improving its sustainability, conserving resources and reducing the environmental impact of its various operations. A copy of Sotheby's Environmental Policy is available on request. Main Enquiries: +44 (0)20 7293 5000.

Photography
Jasper Gough
Oscar Giacomini
Catalogue Designer
Antonella Banfi
Colour Editor
Steve Curley
Production Controller
Victoria Ling





Sotheby's EST. 1744
Collectors gather here.